



Florida Department of Transportation

DISTRICT SIX CONSTRUCTION

Miami-Dade & Monroe counties



State Road (SR) 25/US 27/Okeechobee Road Corridor Wide Construction Update

Below is a list of ongoing construction activities and lane closure information for each project segment.

ONGOING CONSTRUCTION ACTIVITIES

Segment One: From the Broward County Line to west of Florida's Turnpike

- Performing roadway widening along Okeechobee Rd and Frontage Rd
- Installing: grass, seeds and mulch along the medians, light bases and poles along Okeechobee Rd, Intelligent Transportation System fiber optic cables and fencing along northbound Okeechobee Rd and Frontage Rd, guardrail along Krome Ave, and permanent signage.
- Applying the final surface treatment and smoothing the completed concrete pavement at the intersection of Okeechobee Rd and Krome Ave
- Paving northbound Okeechobee Rd

General Lane Closures

- Continuous single lane closure along Okeechobee Rd inside lane from the Broward County Ln to north of NW 154 St
- Nighttime construction activities are taking place from 6 p.m. to 5:30 a.m.
- Temporary single lane closures along Okeechobee Rd south of NW 154 St, in both directions, between the nonpeak hours of 9 a.m. and 3:30 p.m.
- Temporary shoulder closures along SR 25/US 27/Okeechobee Rd, in both directions, from 8 a.m. to 5 p.m.
- Temporary detours along Frontage Road during non-peak hours
- Lane closure along NW 154 Street heading southbound toward Okeechobee Rd

Segment Two: From east of NW 107 Avenue to east of NW 116 Way

- Performing roadway widening and drainage installation work along Okeechobee Rd, NW 116 Way/Hialeah Gardens Blvd, NW S River Dr and Frontage Rd
- Installing the following:
 - Sewer pipes
 - Bridge walls
 - Roadway lighting and sidewalk finishes along Hialeah Gardens Blvd
 - Curb and sidewalk, signalization, and permanent signage along Frontage Rd
 - Intelligent Transportation Systems between Okeechobee and Frontage Rd
- Preparations along southbound Okeechobee Rd and Frontage Rd for an upcoming traffic shift starting on July 31
- Pile driving operations and bridge construction at:
 - Hialeah Gardens Blvd just north of Frontage Road
 - Okeechobee Rd and NW 98 Ave

- Okeechobee Rd and NW 114 St
- NW 116 Way Bridge

General Lane Closures

- A single lane closure along NW 116 Way from Frontage Rd to W 68 St, in both the northbound and southbound direction.
- A single lane closure along Okeechobee Rd from NW 92 Ave to NW 107 Ave, in both the northbound and southbound direction.
- Travel lanes are reduced to two lanes in each direction along the bridge between Okeechobee Road and NW South River Drive. All travel lanes are shifted to the newly construction west side of the bridge.
- Traffic shift for all northbound lanes along Okeechobee Rd from NW 92 Ave to NW 99 Ave. Travel lanes are reduced to two lanes in the northbound direction.

Closures will take place Monday through Saturday during the following hours:

- 9 p.m. to 5:30 a.m. on weekdays
- 11 p.m. to 7:30 a.m. on weekends

PLEASE NOTE THAT SCHEDULES MAY CHANGE DUE TO WEATHER OR UNEXPECTED CONDITIONS.

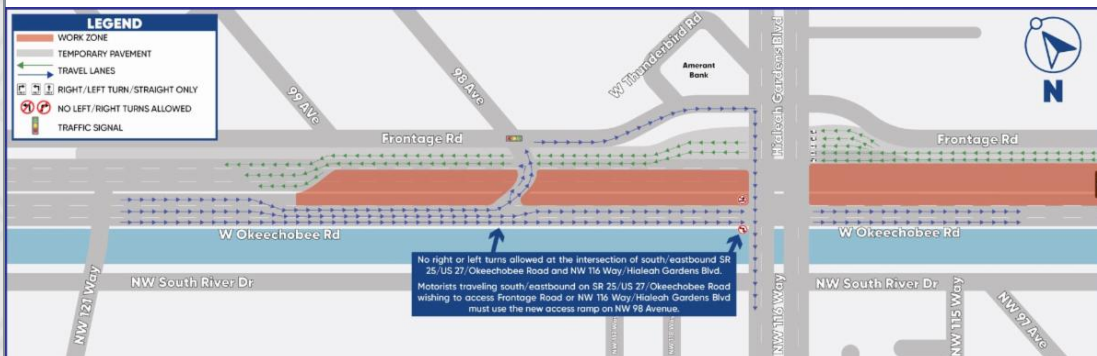
UPCOMING LANE CLOSURES AND TRAFFIC SHIFTS

New Traffic Pattern along the southbound/eastbound SR 25/US 27/Okeechobee Rd

Starting Monday, July 31, 2023, a new traffic pattern and access ramp to and from Frontage Rd will be implemented along southbound/eastbound Okeechobee Rd. See details below:

- Travel lanes along southbound/eastbound Okeechobee Rd will be reduced from three to two lanes.
- No left-turns will be allowed at the NW 116 Way/Hialeah Gardens Blvd intersection.
- No right-turns will be allowed at the NW 116 Way/Hialeah Gardens Blvd intersection.
- Motorists traveling along southbound/eastbound Okeechobee Rd wishing to turn left to access Frontage Rd and northbound NW 116 Way/Hialeah Gardens Blvd will be directed to the newly constructed ramp and intersection at Okeechobee Rd and NW 98 Ave.
- Motorists traveling along southbound/eastbound Okeechobee Rd wishing to turn right to access southbound NW 116 Way will be directed to the newly constructed ramp and intersection at Okeechobee Rd and NW 98 Ave.

In order to safely implement these new traffic patterns, efforts will begin on Friday, July 28 and last throughout the weekend. During this time, multiple lane closures will take place. Please follow the posted signage.



Additional traffic patterns from 9 p.m. on Friday, July 21 to 5 a.m. on Monday, July 24

- Full closure of Frontage Road between Hialeah Gardens Blvd and NW 98 Avenue

A full closure of Frontage Rd between Hialeah Gardens Blvd and NW 98 Avenue will take place for roadway paving operations. Access will be provided to motorists wishing to access the gas station plaza. For details, click [here](#).

- **Southbound Okeechobee Road from NW 121 Way to NW 116 Way Lane closures**

Two southbound lanes along Okeechobee Rd between NW 121 Way and NW 116 Way will be closed due to drainage operations. One lane will remain open at all times.

- **Full closure of NW S River Dr between NW 116 Way and NW 115 Way**

NW South River drive will be fully closed between NW 116 Way and NW 115 Way. This closure will allow the contractor to install a 24-inch sanitary sewer pipe.

Detours:

- Motorists heading northbound on NW 116 Way who wish to access eastbound NW South River Drive will be detoured to go east on to NW 106 Terrace, continue to NW 106 Street to proceed on to NW South River Drive.
- Motorists heading southbound on Hialeah Gardens Boulevard who wish to access NW South River Drive east of NW 116 Way, will have to turn left on Okeechobee Road, make a right at NW 105 Way, and proceed on to NW South River Drive.
- Motorists traveling along NW South River Drive who wish to access Okeechobee Road or NW 116 Way will be detoured to the NW 105 Way intersection.

[PLAN YOUR COMMUTE](#)

View the corridor wide traffic patterns and lane closures by clicking below:

[Online Map](#)

[FOR MORE INFORMATION](#)

Contact Senior Community Outreach Specialist Maria Alzate at Maria@iscprgroup.com or at (305) 560-8218.

Drivers are encouraged to log onto www.fl511.com to get real-time traffic and lane closure information.

[Corridor Wide Website](#)

