



Florida Department of Transportation
DISTRICT SIX CONSTRUCTION
Miami-Dade & Monroe counties



State Road (SR) 25/US 27/Okeechobee Road Corridor Wide Construction Update

Below is a list of ongoing construction activities and lane closure information for each project segment.

ONGOING CONSTRUCTION ACTIVITIES

Segment One: From the Broward County Line to west of Florida's Turnpike

- Performing drainage work along:
 - Southbound Okeechobee Rd
 - Krome Ave
 - Frontage Rd
- Installing grass throughout the project
- Installing light bases and poles along Okeechobee Rd
- Installing Intelligent Transportation System conduits along northbound Okeechobee Rd
- Performing and paving roadway widening along Okeechobee Rd and Frontage Rd
- Placing concrete pavement at various intersections:
 - Krome Ave
 - NW 154 St

General Lane Closures

- Continuous single lane closure along Okeechobee Rd inside lane from the Broward County Ln to north of NW 154 St
- Nighttime construction activities are taking place from 6 p.m. to 5:30 a.m.
- Temporary single lane closures south of NW 154 St, in both directions, between the nonpeak hours of 9 a.m. and 3:30 p.m.
- Temporary shoulder closures along SR 25/US 27/Okeechobee Rd, in both directions, from 8 a.m. to 5 p.m.
- Temporary detours along Frontage Road during non-peak hours

Segment Two: From east of NW 107 Avenue to east of NW 116 Way

- Performing roadway widening and drainage installation work along Okeechobee Rd, NW 116 Way/Hialeah Gardens Blvd, NW S River Dr and Frontage Rd
- Roadway widening adjacent to Hialeah Gardens High School
- Installing the following:

- Sewer pipe at Okeechobee Rd
- Traffic signal foundations, curb and sidewalk along Frontage Rd and Hialeah Gardens Blvd
- Pile driving operations and bridge construction at:
 - NW 116 Way Bridge
 - Okeechobee Rd and NW 98 Ave
 - Okeechobee Rd and NW 114 St

General Lane Closures

- A single lane closure along NW 116 Way from Frontage Rd to W 68 St, in both the northbound and southbound direction.
- A single lane closure along Okeechobee Rd from NW 92 Ave to NW 107 Ave, in both the northbound and southbound direction.
- Traffic shift for all southbound lanes at the NW 116 Way Bridge. Travel lanes are reduced to two lanes in each direction along the bridge between Okeechobee Road and NW South River Drive.

Closures will take place Monday through Saturday during the following hours:

- 9 p.m. to 5:30 a.m. on weekdays
- 11 p.m. to 7:30 a.m. on weekends

PLEASE NOTE THAT SCHEDULES MAY CHANGE DUE TO WEATHER OR UNEXPECTED CONDITIONS.

UPCOMING TRAFFIC PATTERNS AND LANE CLOSURES

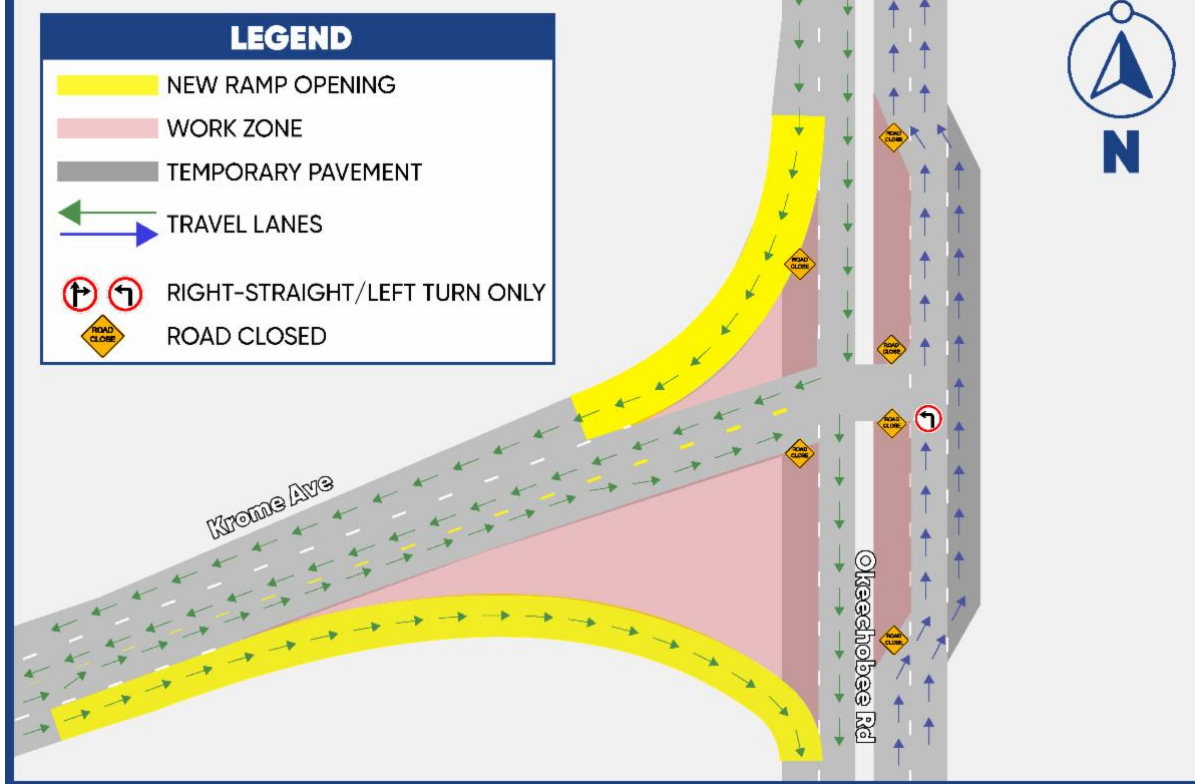
Okeechobee Rd and Krome Ave intersection

- The Okeechobee Rd and Krome Ave intersection will be shifted to the west onto the new concrete pavement the week of March 13.

CURRENT TRAFFIC PATTERNS AND LANE CLOSURES

Segment One:

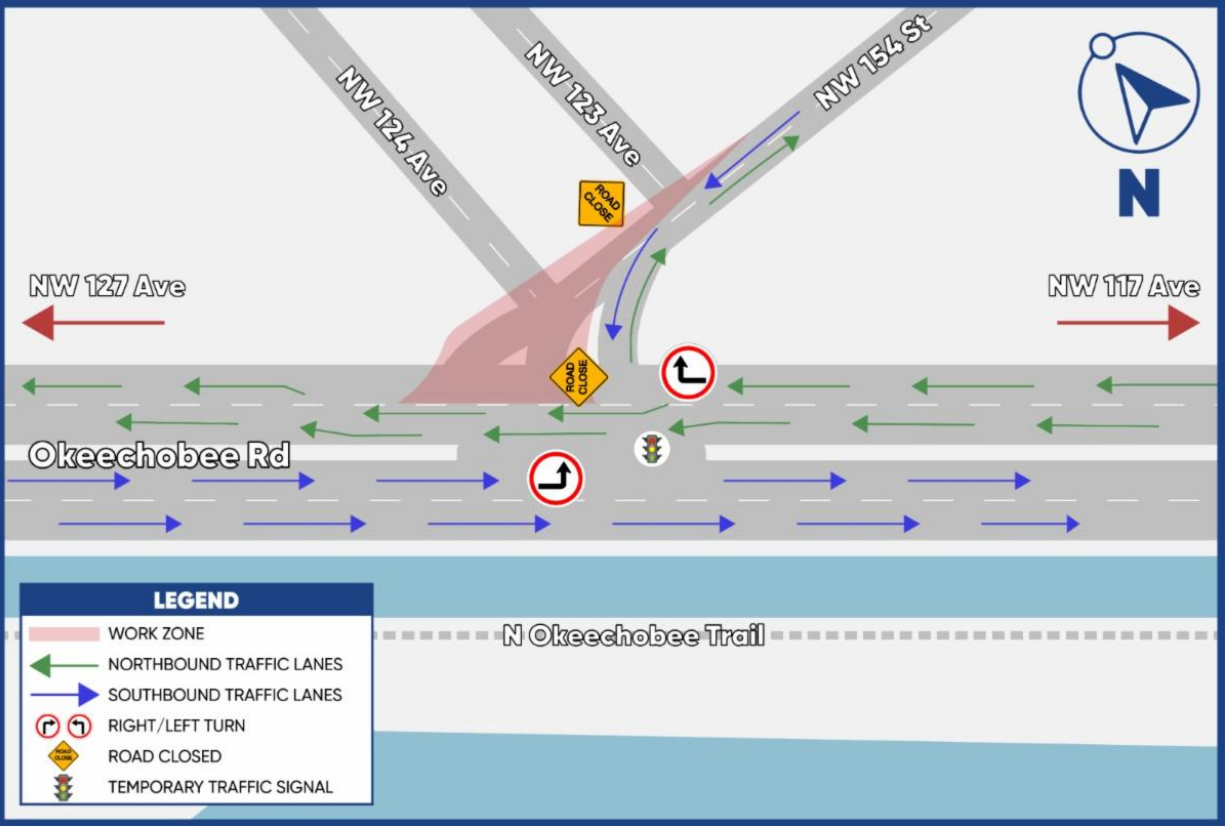
- Okeechobee Road and Krome Avenue Intersection



- Okeechobee Road, between NW 127 Avenue and NW 117 Avenue



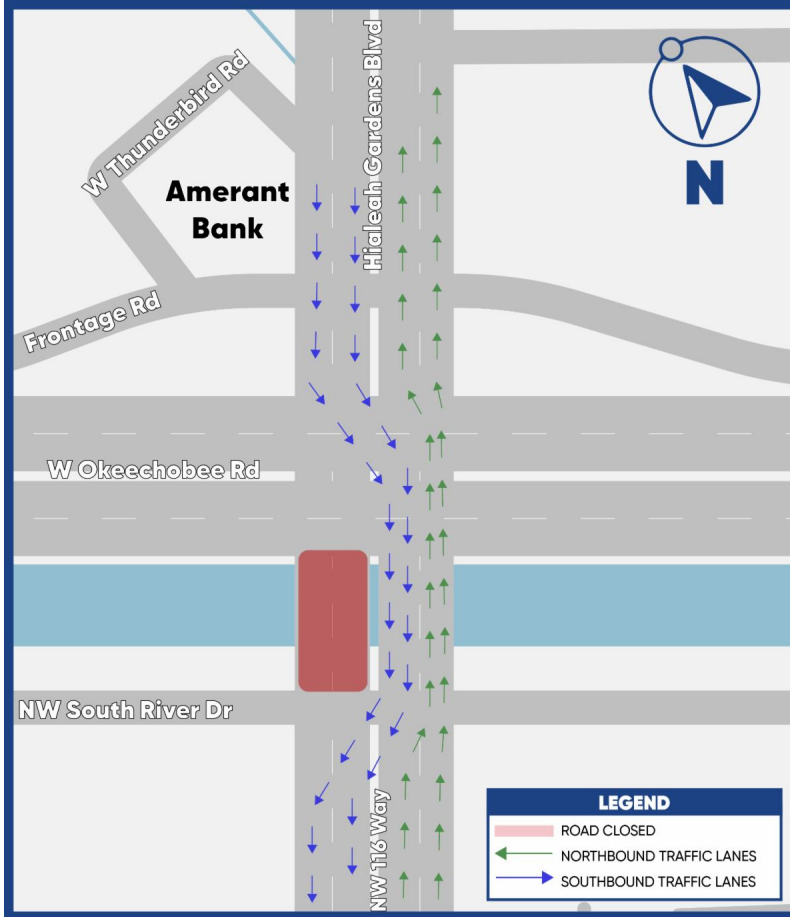
- Okeechobee Road and NW 154 Street Intersection



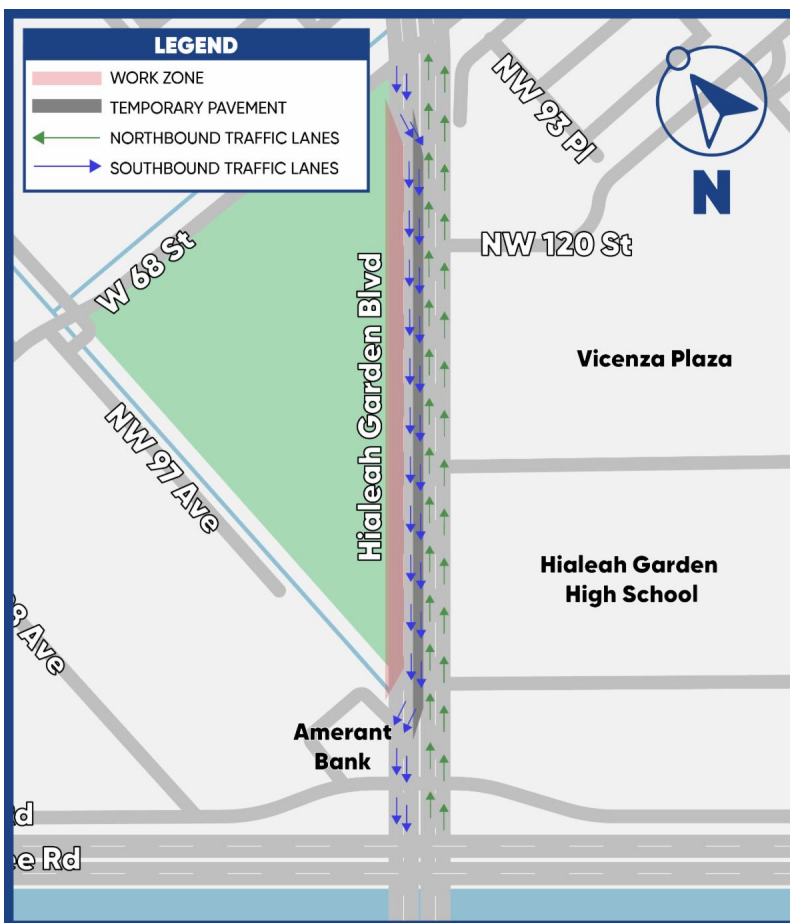
Segment Two:

- NW 116 Way Bridge Traffic Shift

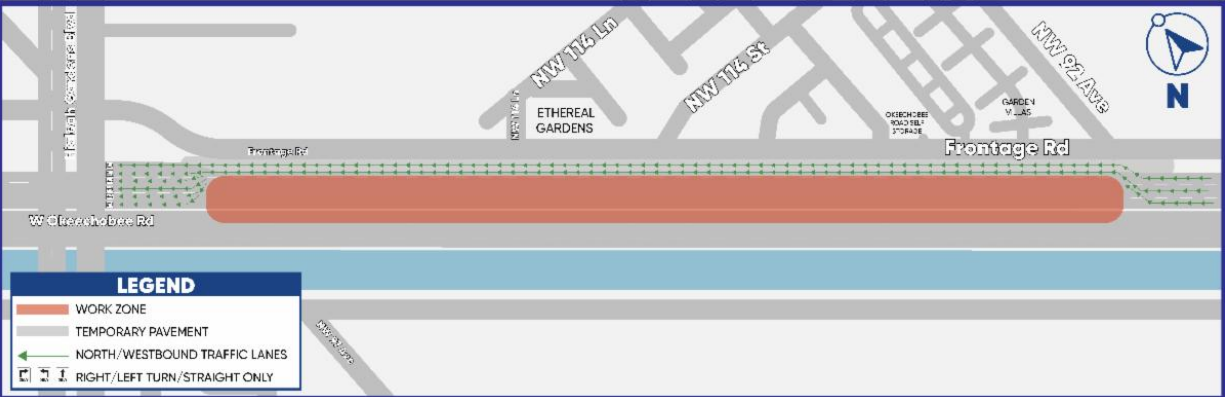
[Watch the Video!](#)



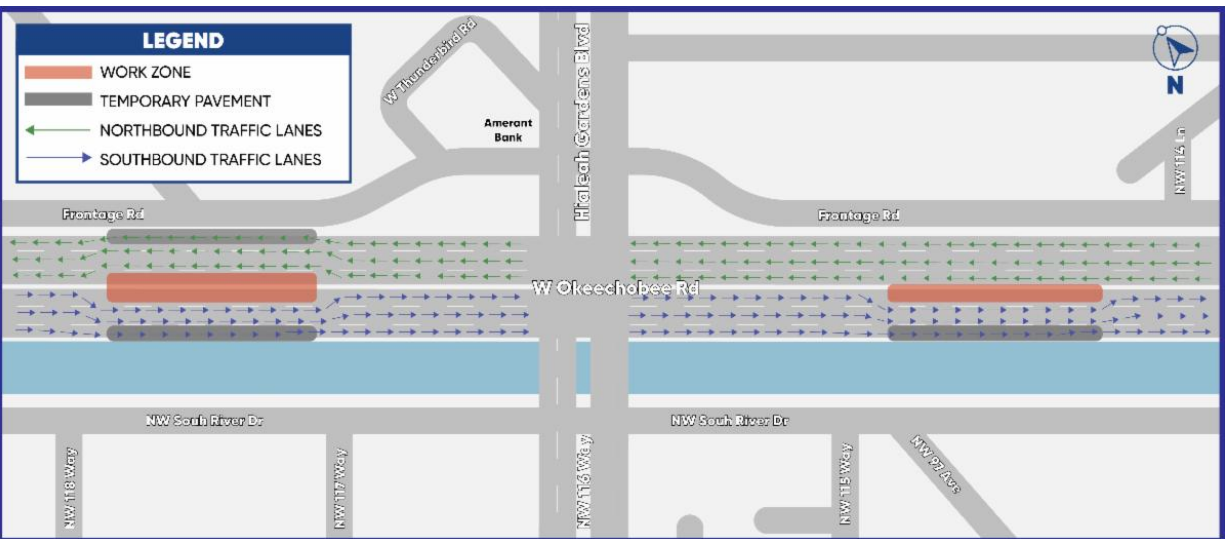
- Southbound Hialeah Gardens Boulevard from W 68 Street to Frontage Road



- Northbound Okeechobee Road between NW 116 Way and NW 92 Avenue



- Okeechobee Road, between NW 98 Avenue and NW 114 Lane



- Frontage Road between east of NW 103 Avenue to NW 98 Avenue



FOR MORE INFORMATION

Contact Senior Community Outreach Specialist Maria Alzate at Maria@iscprgroup.com or at (305) 560-8218.

Drivers are encouraged to log onto www.fl511.com to get real-time traffic and lane closure information.

Corridor Wide Website





Florida Department of Transportation, District Six | 1000 N.W. 111 Avenue, Miami, FL 33172

[Unsubscribe monica@iscprgroup.com](mailto:monica@iscprgroup.com)

[Constant Contact Data Notice](#)

Sent by maria@iscprgroup.com