



Florida Department of Transportation
DISTRICT SIX CONSTRUCTION
Miami-Dade & Monroe counties



State Road (SR) 25/US 27/Okeechobee Road Corridor Wide Construction Update

Below is a list of ongoing construction activities and lane closure information for each project segment.

ONGOING CONSTRUCTION ACTIVITIES

Segment One: From the Broward County Line to west of Florida's Turnpike

- Performing drainage work along:
 - Southbound Okeechobee Rd
 - Krome Ave
 - Frontage Rd
- Installing light pole bases along northbound and southbound Okeechobee Rd and the frontage roads
- Pouring concrete at the intersection of Okeechobee Rd and Krome Ave
- Installing Intelligent Transportation System conduits along northbound Okeechobee Rd
- Performing and paving roadway widening along northbound and southbound Okeechobee Rd

General Lane Closures

- Continuous single lane closure along Okeechobee Rd inside lane from the Broward County Ln to north of NW 154 St.
- Nighttime construction activities are taking place from 6 p.m. to 5:30 a.m.
- Temporary single lane closures south of NW 154 St, in both directions, between the nonpeak hours of 9 a.m. and 3:30 p.m.
- Temporary shoulder closures along SR 25/US 27/Okeechobee Rd, in both directions, from 8 a.m. to 5 p.m.

Segment Two: From east of NW 107 Avenue to east of NW 116 Way

- Performing roadway widening and drainage installation work along Okeechobee Rd, NW 116 Way/Hialeah Gardens Blvd, and Frontage Rd
- Installing the following:
 - Sewer pipe at Okeechobee Rd
 - Permanent light pole bases and roadway signage along Frontage Rd
 - Sidewalk and curb along Frontage Rd

- Pile driving operations and bridge construction at:
 - NW 116 Way Bridge
 - Okeechobee Rd and NW 98 Ave
 - Okeechobee Rd and NW 114 St
 - Hialeah Gardens Boulevard and Frontage Rd

General Lane Closures

- A single lane closure along NW 116 Way from Frontage Rd to W 68 St, in both the northbound and southbound direction.
- A single lane closure along Okeechobee Rd from NW 92 Ave to NW 107 Ave, in both the northbound and southbound direction.
- Traffic shift for all southbound lanes at the NW 116 Way Bridge. Travel lanes are reduced to two lanes in each direction along the bridge between Okeechobee Road and NW South River Drive.

Closures will take place Monday through Saturday during the following hours:

- 9 p.m. to 5:30 a.m. on weekdays
- 11 p.m. to 7:30 a.m. on weekends

PLEASE NOTE THAT SCHEDULES MAY CHANGE DUE TO WEATHER OR UNEXPECTED CONDITIONS.

PROGRESS PHOTO

- Frontage Road and NW 114 Street Intersection



UPCOMING TRAFFIC PATTERNS AND LANE CLOSURES

Okeechobee Road and Krome Avenue Intersection

- Motorists traveling northbound on Krome Avenue wishing to access southbound Okeechobee Rd will have access through newly constructed designated ramp.

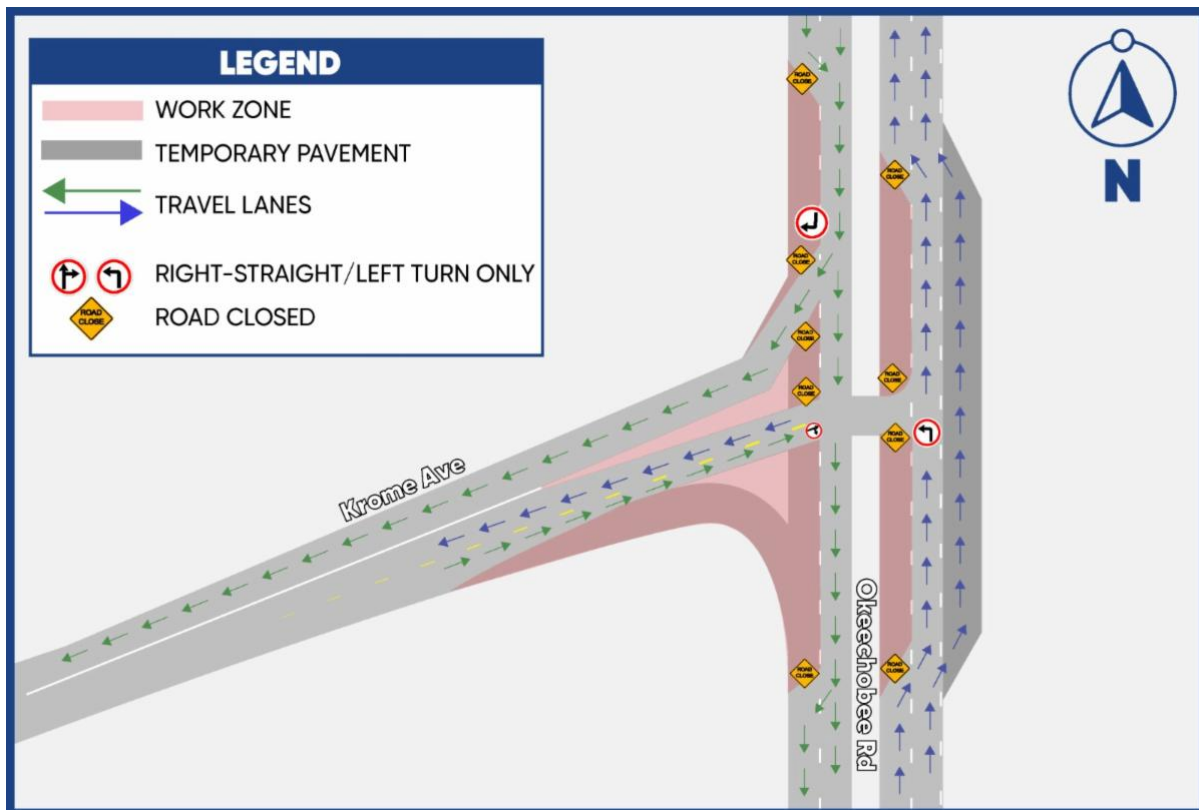
NW 116 Way Bridge between Okeechobee Road and NW S River Drive

- On Monday, February 6, and Tuesday, February 7, the contractor will have nightly lane closures along the bridge. These lane closures will take place from 9 p.m. to 5 a.m. Access in and around the bridge will be maintained at all times.

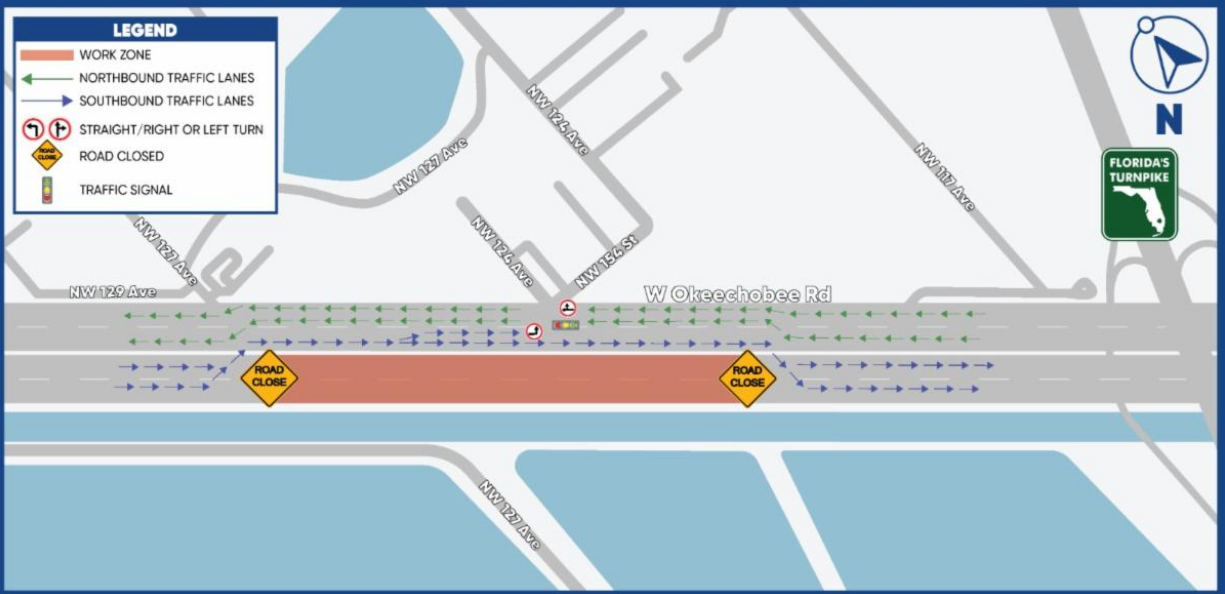
CURRENT TRAFFIC PATTERNS AND LANE CLOSURES

Segment One:

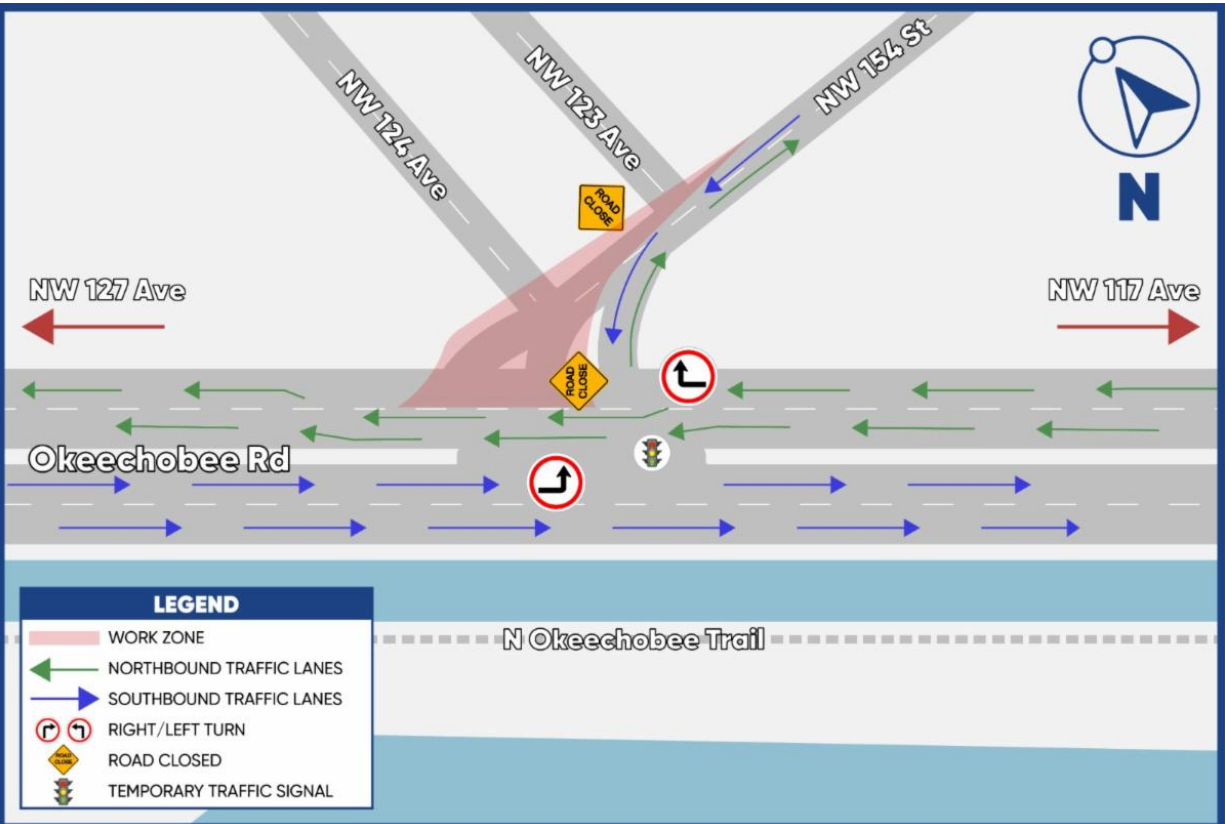
- Okeechobee Road and Krome Avenue Intersection



- Okeechobee Road, between NW 127 Avenue and NW 117 Avenue



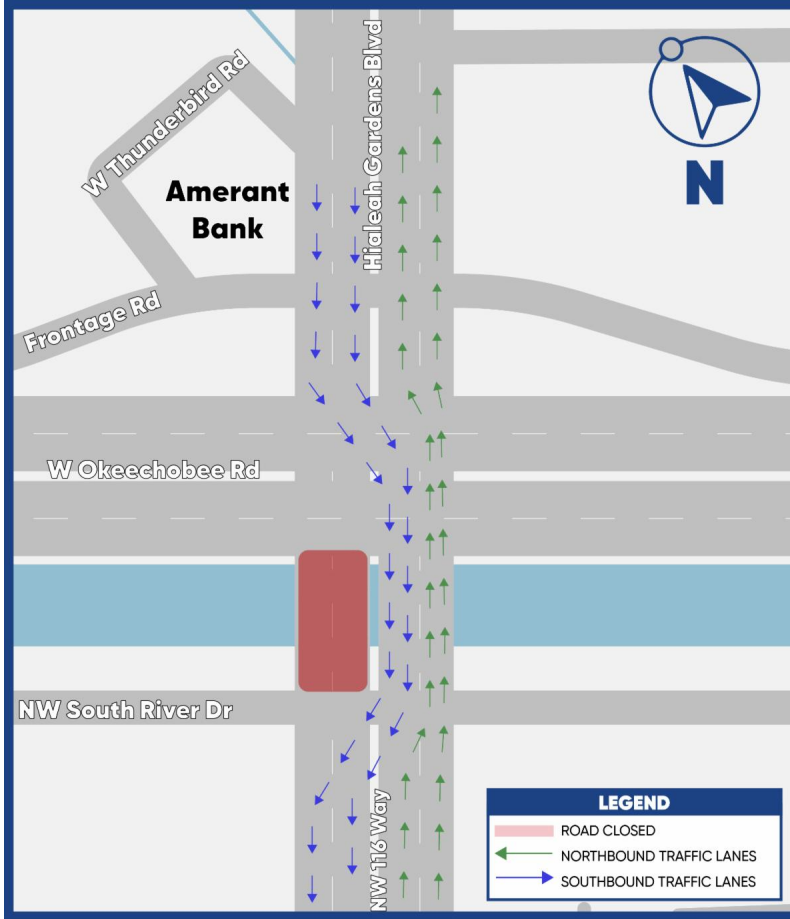
- Okeechobee Road and NW 154 Street Intersection



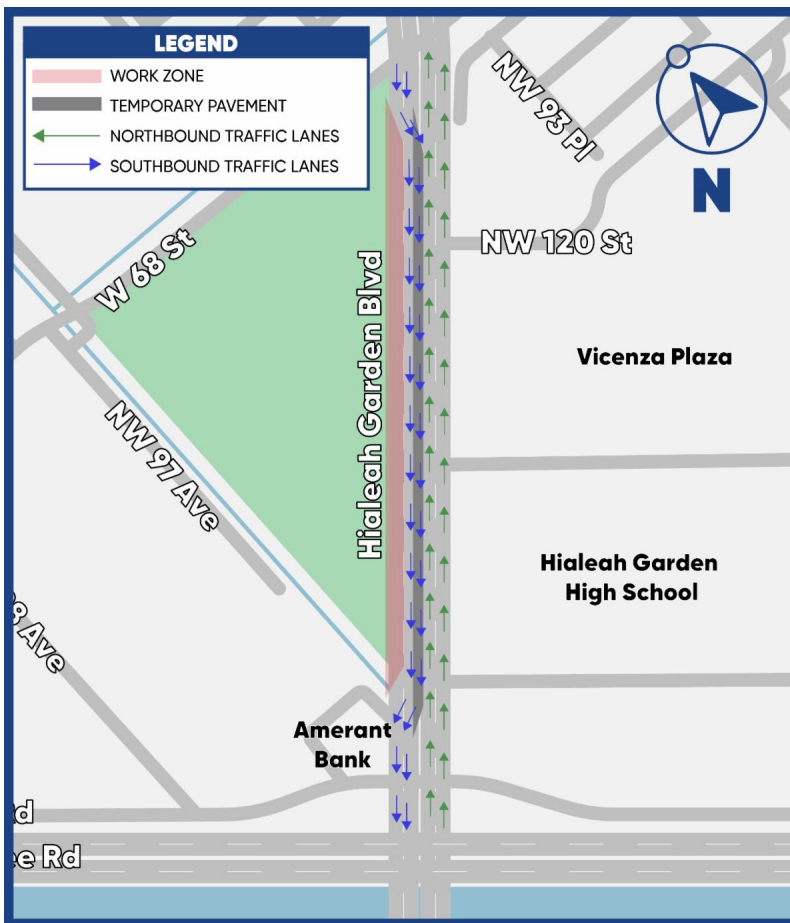
Segment Two:

- NW 116 Way Bridge Traffic Shift

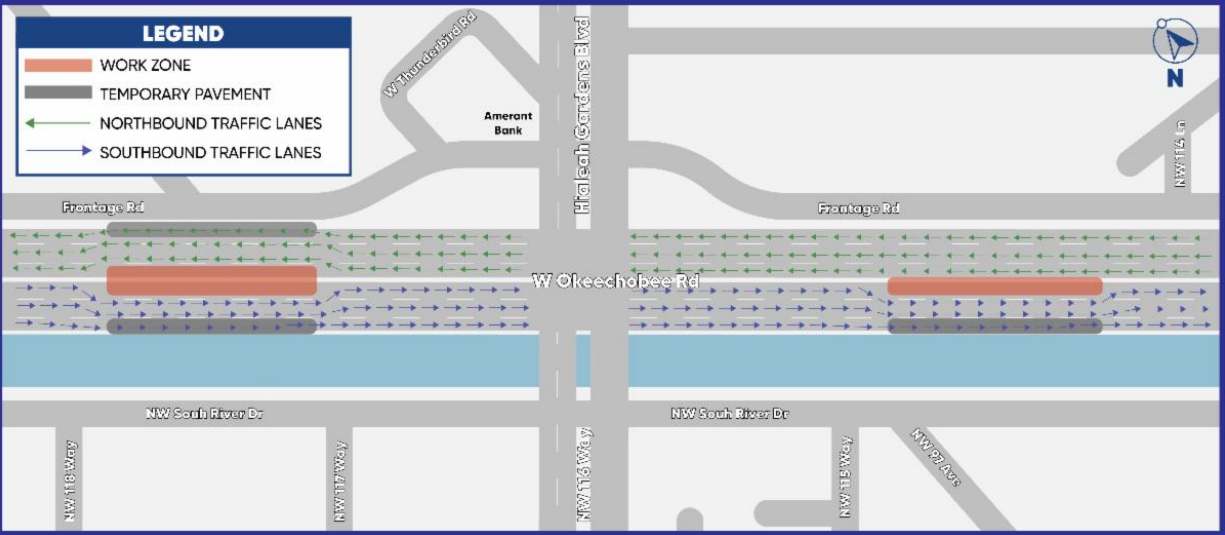
[Watch the Video!](#)



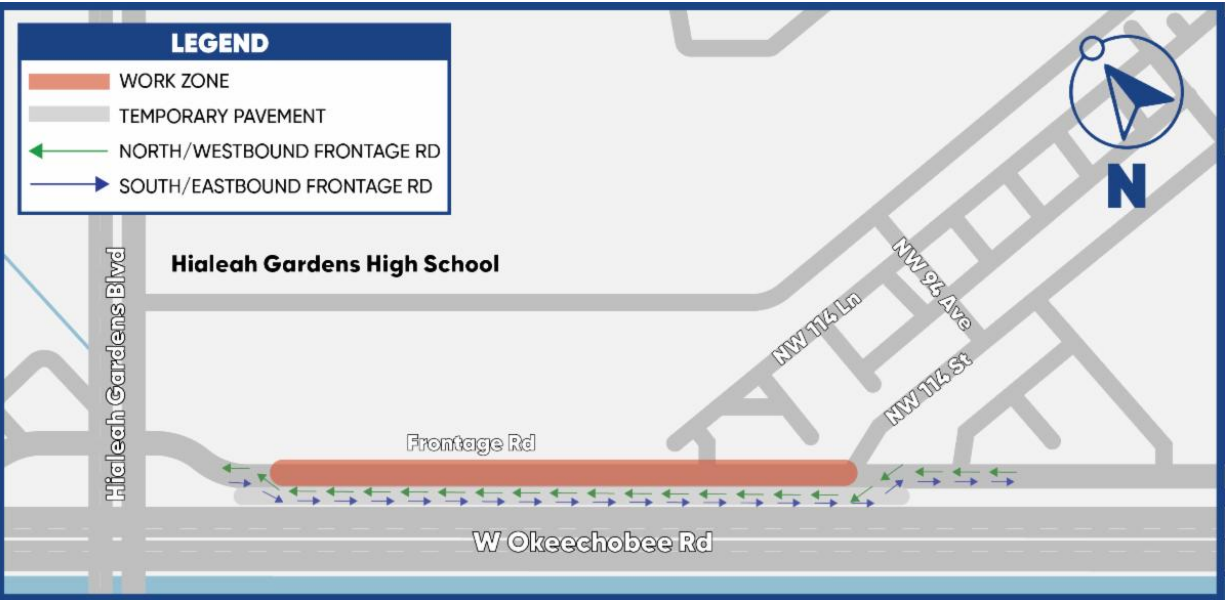
- Southbound Hialeah Gardens Boulevard from W 68 Street to Frontage Road



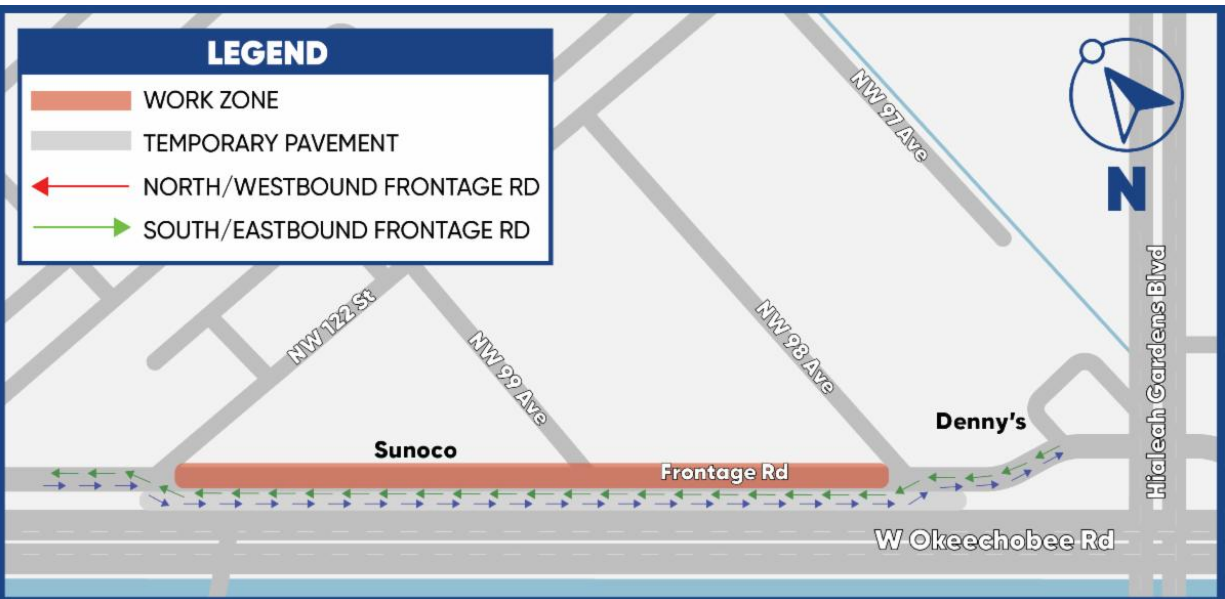
- Okeechobee Road, between NW 98 Avenue and NW 114 Lane



- Frontage Road, between east of Hialeah Gardens Boulevard and NW 114 Street



- Frontage Road, between NW 122 Avenue and NW 98 Avenue



UPCOMING OUTREACH EVENTS

- **February 8:** Pop-up event at Dade Corners Travel Plaza, 17696 SW 8 St, Miami, FL 33194 from 10 a.m. - 12 p.m.
- **February 9:** Office Hours with the Outreach team, see below:

OFFICE HOURS
with the outreach team

The Okeechobee Community Outreach Team will be available to answer questions about ongoing construction activities and provide information related to the upcoming project segments

CITY OF HIALEAH GARDENS CHAMBERS
10001 NW 87 AVENUE, HIALEAH GARDENS, FL 33016
THURSDAY, FEBRUARY 9, 2023
10:30 A.M. - 12:30 P.M.

FDOT

FOR MORE INFORMATION

Contact Senior Community Outreach Specialist Maria Alzate at Maria@iscprgroup.com or at (305) 560-8218. You can also click below to visit our project website:

Corridorwide Website

Drivers are encouraged to log onto www.fl511.com to get real-time traffic and lane closure information.



Constant Contact Data Notice

Sent by maria@iscprgroup.com
