



Florida Department of Transportation  
**DISTRICT SIX CONSTRUCTION**  
Miami-Dade & Monroe counties



## State Road (SR) 25/US 27/Okeechobee Road Corridor Wide Construction Update

Below is a list of ongoing construction activities and lane closure information for each project segment.

---

### ONGOING CONSTRUCTION ACTIVITIES

#### **Segment One: From the Broward County Line to west of Florida's Turnpike**

- Performing drainage work along:
  - Southbound Okeechobee Rd
  - Krome Ave
  - Frontage Rd
- Installing light pole bases along northbound and southbound Okeechobee Rd and the frontage roads
- Installing Intelligent Transportation System conduits along northbound Okeechobee Rd
- Performing and paving roadway widening along northbound and southbound Okeechobee Rd

#### **General Lane Closures**

- Continuous single lane closure along Okeechobee Rd inside lane from the Broward County Ln to north of NW 154 St
- Nighttime construction activities are taking place from 6 p.m. to 5:30 a.m.
- Temporary single lane closures south of NW 154 St, in both directions, between the nonpeak hours of 9 a.m. and 3:30 p.m.
- Temporary shoulder closures along SR 25/US 27/Okeechobee Rd, in both directions, from 8 a.m. to 5 p.m.
- Temporary detours along Frontage Road during non-peak hours

#### **Segment Two: From east of NW 107 Avenue to east of NW 116 Way**

- Performing roadway widening and drainage installation work along Okeechobee Rd, NW 116 Way/Hialeah Gardens Blvd, and Frontage Rd
- Installing the following:
  - Sewer pipe at Okeechobee Rd
  - Permanent light pole bases along Hialeah Gardens Blvd
- Pile driving operations and bridge construction at:

- NW 116 Way Bridge
- Okeechobee Rd and NW 98 Ave
- Okeechobee Rd and NW 114 St
- Hialeah Gardens Blvd and Frontage Rd

### **General Lane Closures**

- A single lane closure along NW 116 Way from Frontage Rd to W 68 St, in both the northbound and southbound direction.
- A single lane closure along Okeechobee Rd from NW 92 Ave to NW 107 Ave, in both the northbound and southbound direction.
- Traffic shift for all southbound lanes at the NW 116 Way Bridge. Travel lanes are reduced to two lanes in each direction along the bridge between Okeechobee Road and NW South River Drive.

Closures will take place Monday through Saturday during the following hours:

- 9 p.m. to 5:30 a.m. on weekdays
- 11 p.m. to 7:30 a.m. on weekends

***PLEASE NOTE THAT SCHEDULES MAY CHANGE DUE TO WEATHER OR UNEXPECTED CONDITIONS.***

---

### **PROGRESS PHOTO**

- Northbound Krome Avenue heading toward Okeechobee Road



---

### **UPCOMING TRAFFIC PATTERNS AND LANE CLOSURES**

#### **NW 116 Way Bridge between Okeechobee Road and NW S River Drive**

- On Monday, February 13, and Tuesday, February 14, the contractor will have nightly lane closures along the bridge. These lane closures will take place from 9

### **NW 115 Way adjacent to NW S River Drive**

- Starting Monday, February 13 to Friday, February 17, the southbound lane along NW 115 Way, adjacent to NW S River Drive, will be continuously closed. This closure will allow the contractor to install underground conduits. Flaggers will be on site assisting with the traffic flow. Officers will also be present.



### **Frontage Road between NW 116 Way and NW 92 Avenue**

- On Tuesday night, February 14, the travel lanes along Frontage Road from NW 116 Way to NW 92 Avenue will be shifted north, from the temporary pavement to the newly paved road.

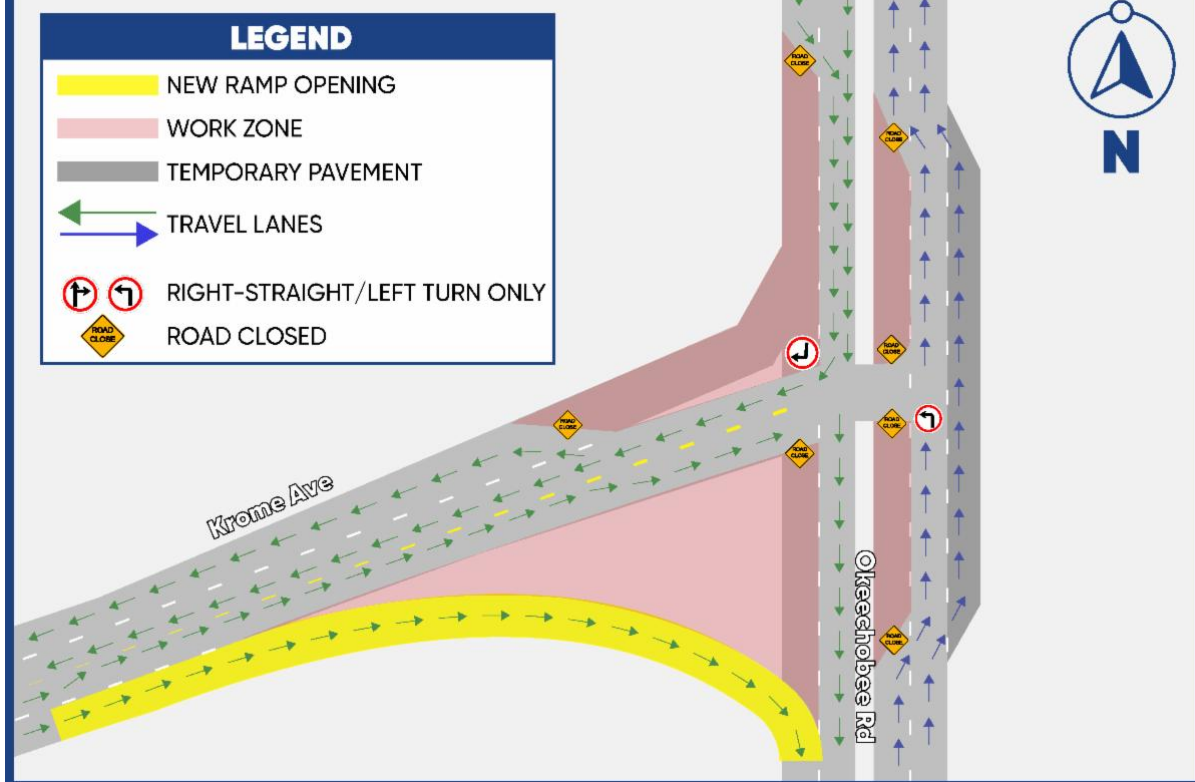
### **Okeechobee Road between NW 116 Way and NW 92 Avenue**

- On Sunday night, February 19, the west/northbound travel lanes along Okeechobee Road between NW 116 Way and NW 92 Avenue will be shifted north onto temporary pavement. The travel lanes on west/northbound Okeechobee Road will be reduced from three to two lanes within this area.

## **CURRENT TRAFFIC PATTERNS AND LANE CLOSURES**

### **Segment One:**

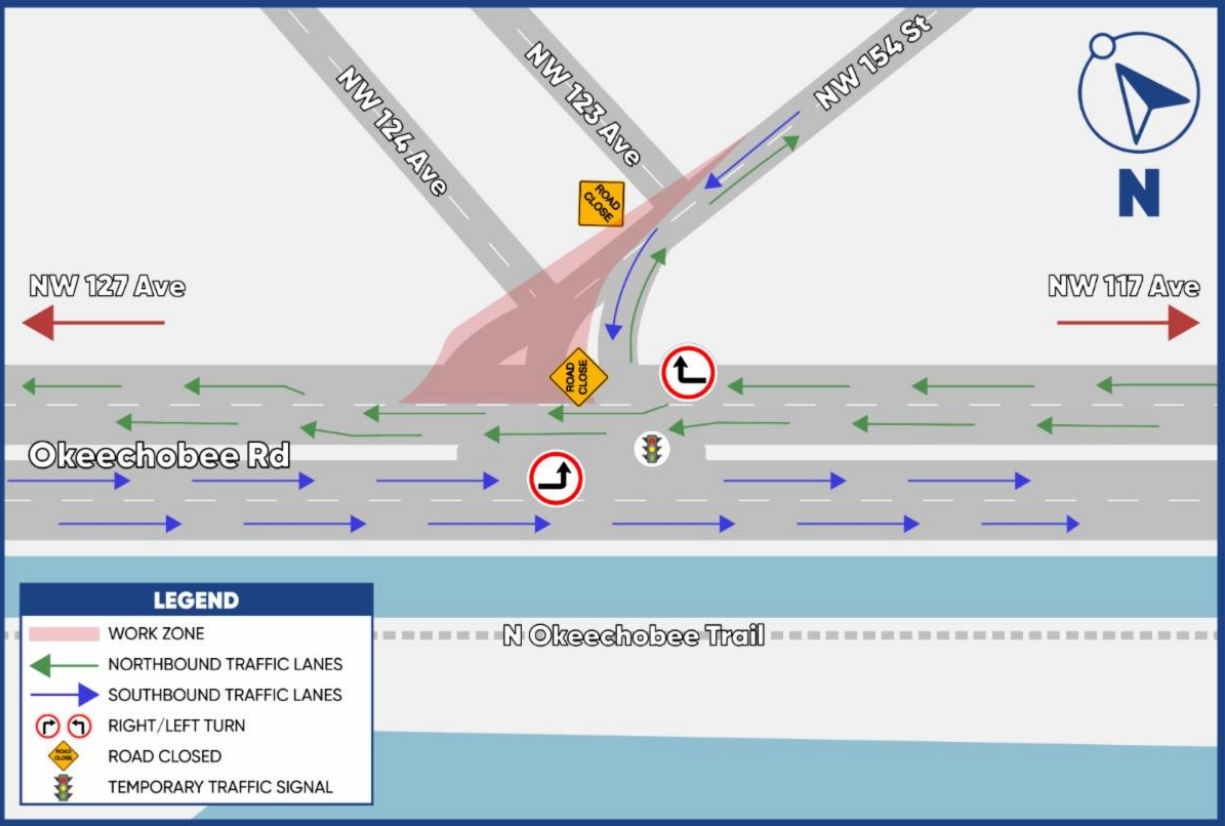
- Okeechobee Road and Krome Avenue Intersection



- Okeechobee Road, between NW 127 Avenue and NW 117 Avenue



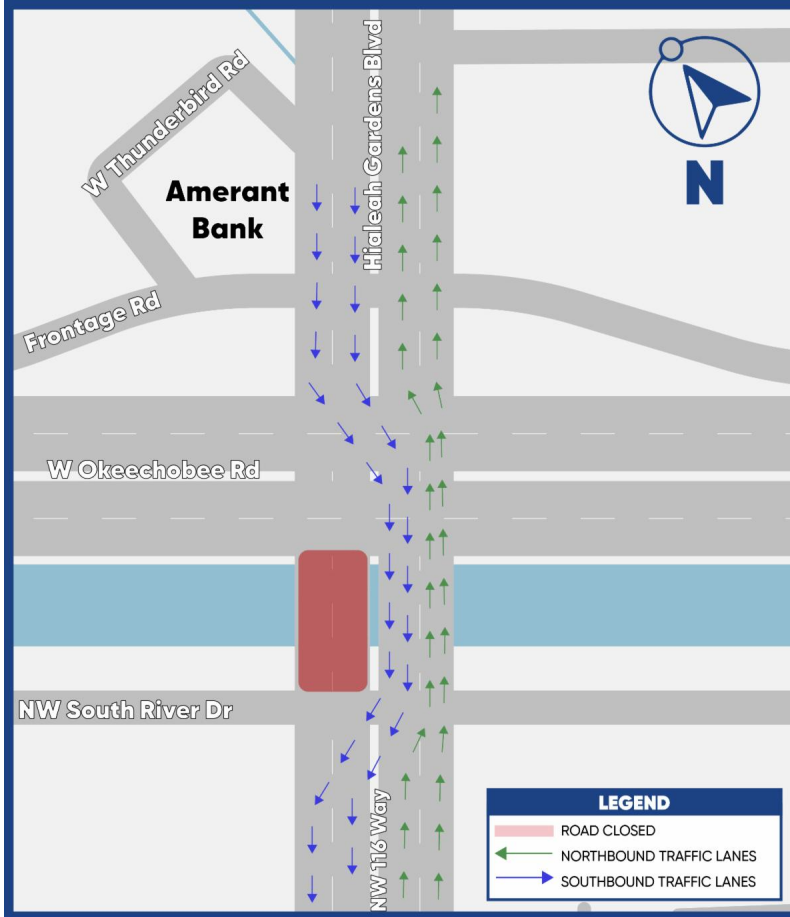
- Okeechobee Road and NW 154 Street Intersection



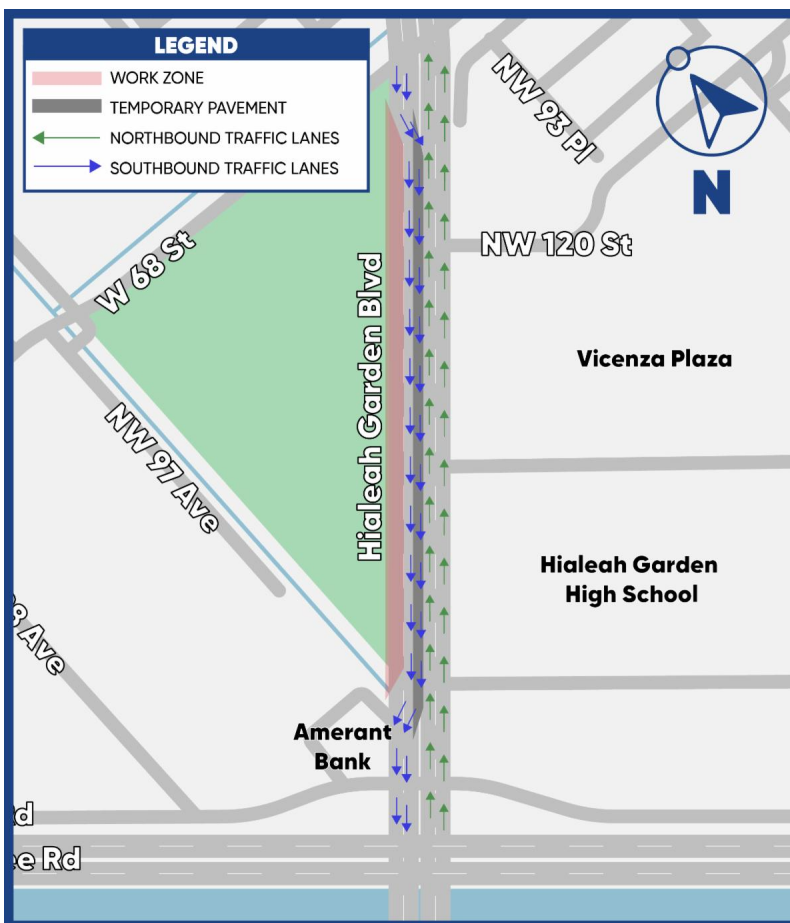
**Segment Two:**

- NW 116 Way Bridge Traffic Shift

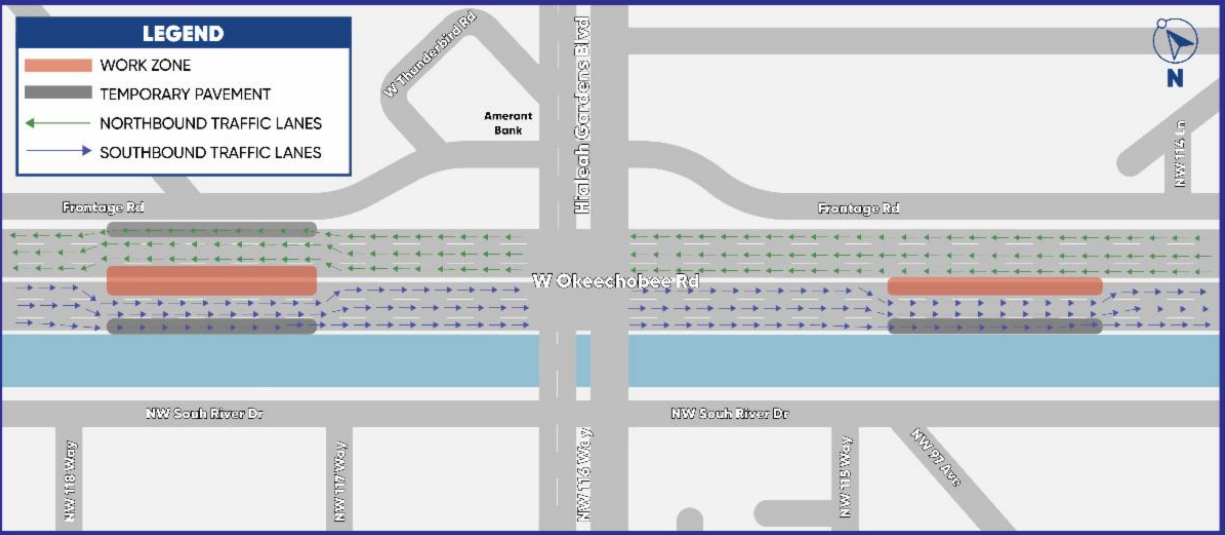
[Watch the Video!](#)



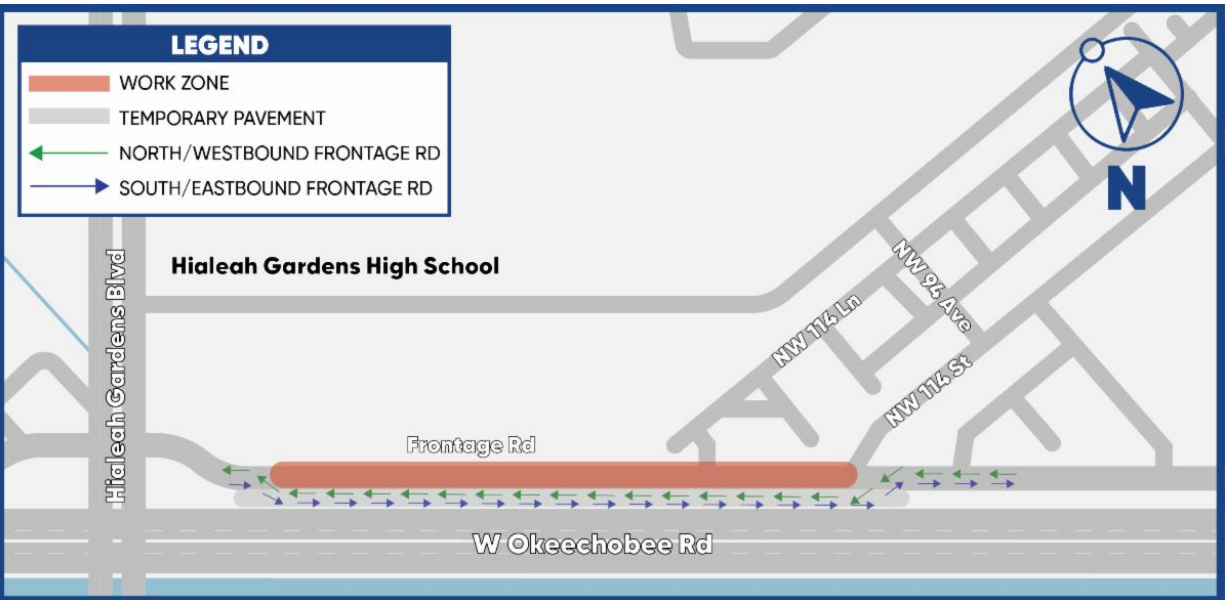
- Southbound Hialeah Gardens Boulevard from W 68 Street to Frontage Road



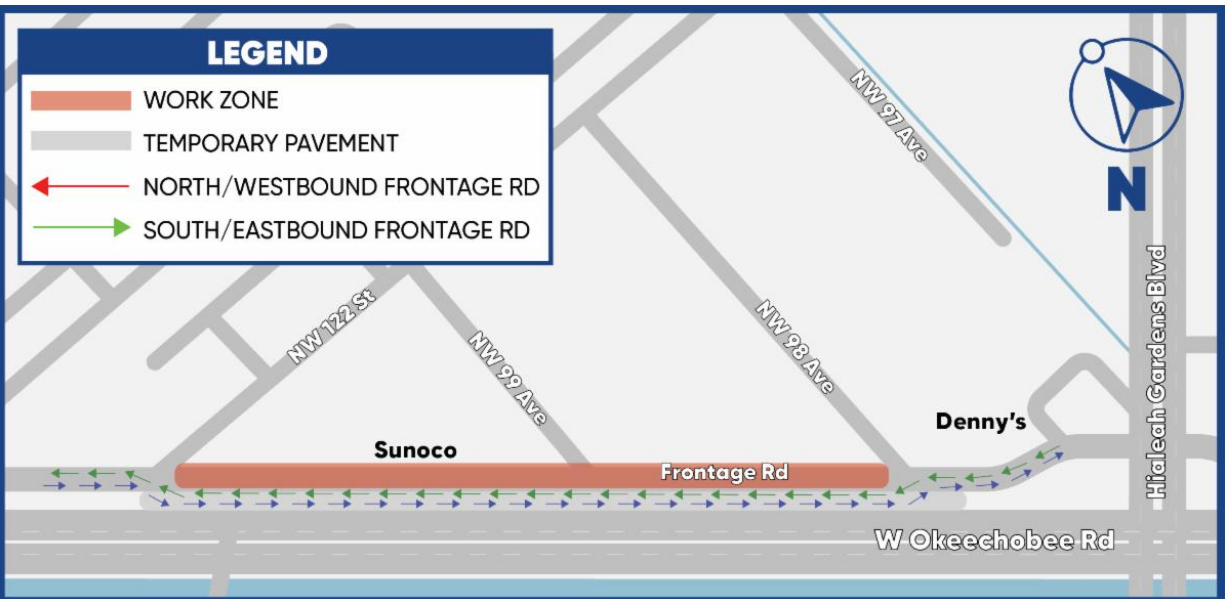
- Okeechobee Road, between NW 98 Avenue and NW 114 Lane



- Frontage Road, between east of Hialeah Gardens Boulevard and NW 114 Street



- Frontage Road, between NW 122 Avenue and NW 98 Avenue



## [FOR MORE INFORMATION](#)

Contact Senior Community Outreach Specialist Maria Alzate at [Maria@iscprgroup.com](mailto:Maria@iscprgroup.com) or at (305) 560-8218. You can also click below to visit our project website:

[Corridorwide Website](#)

Drivers are encouraged to log onto [www.fl511.com](http://www.fl511.com) to get real-time traffic and lane closure information.



Florida Department of Transportation, District Six | 1000 N.W. 111 Avenue, Miami, FL 33172

[Unsubscribe monica@iscprgroup.com](mailto:monica@iscprgroup.com)

[Constant Contact Data Notice](#)

Sent by [maria@iscprgroup.com](mailto:maria@iscprgroup.com)