



Florida Department of Transportation  
**DISTRICT SIX CONSTRUCTION**  
Miami-Dade & Monroe counties



## State Road (SR) 25/US 27/Okeechobee Road Corridor Wide Construction Update

Below is a list of ongoing construction activities and lane closure information for each project segment.

---

### ONGOING CONSTRUCTION ACTIVITIES

#### **Segment One: From the Broward County Line to west of Florida's Turnpike**

- Performing drainage work along:
  - Southbound Okeechobee Rd
  - Krome Ave
  - Frontage Rd
- Installing light pole bases along northbound and southbound Okeechobee Rd and the frontage roads
- Pouring concrete at the intersection of Okeechobee Rd and Krome Ave
- Installing Intelligent Transportation System conduits along northbound Okeechobee Rd
- Performing and paving roadway widening along northbound and southbound Okeechobee Rd

#### **General Lane Closures**

- Continuous single lane closure along Okeechobee Rd inside lane from the Broward County Ln to north of NW 154 St.
- Nighttime construction activities are taking place from 6 p.m. to 5:30 a.m.
- Temporary single lane closures south of NW 154 St, in both directions, between the nonpeak hours of 9 a.m. and 3:30 p.m.
- Temporary shoulder closures along SR 25/US 27/Okeechobee Rd, in both directions, from 8 a.m. to 5 p.m.

#### **Segment Two: From east of NW 107 Avenue to east of NW 116 Way**

- Performing roadway widening and drainage installation work along Okeechobee Rd, NW 116 Way/Hialeah Gardens Blvd, and Frontage Rd
- Excavation work adjacent to Hialeah Gardens High School
- Roadway reconstruction at NW 114 St and Frontage Rd
- Paving operations along Frontage Rd, east of NW 116 Way
- Installing the following:

- Sewer pipe at Okeechobee Rd
- Permanent light pole bases and roadway signage along Frontage Rd
- Pile driving operations and bridge construction at:
  - NW 116 Way Bridge
  - Okeechobee Rd and NW 98 Ave
  - Okeechobee Rd and NW 114 St
  - Hialeah Gardens Boulevard and Frontage Rd

#### **General Lane Closures**

- A single lane closure along NW 116 Way from Frontage Rd to W 68 St, in both the northbound and southbound direction.
- A single lane closure along Okeechobee Rd from NW 92 Ave to NW 107 Ave, in both the northbound and southbound direction.
- Traffic shift for all southbound lanes at the NW 116 Way Bridge. Travel lanes are reduced to two lanes in each direction along the bridge between Okeechobee Road and NW South River Drive.

Closures will take place Monday through Saturday during the following hours:

- 9 p.m. to 5:30 a.m. on weekdays
- 11 p.m. to 7:30 a.m. on weekends

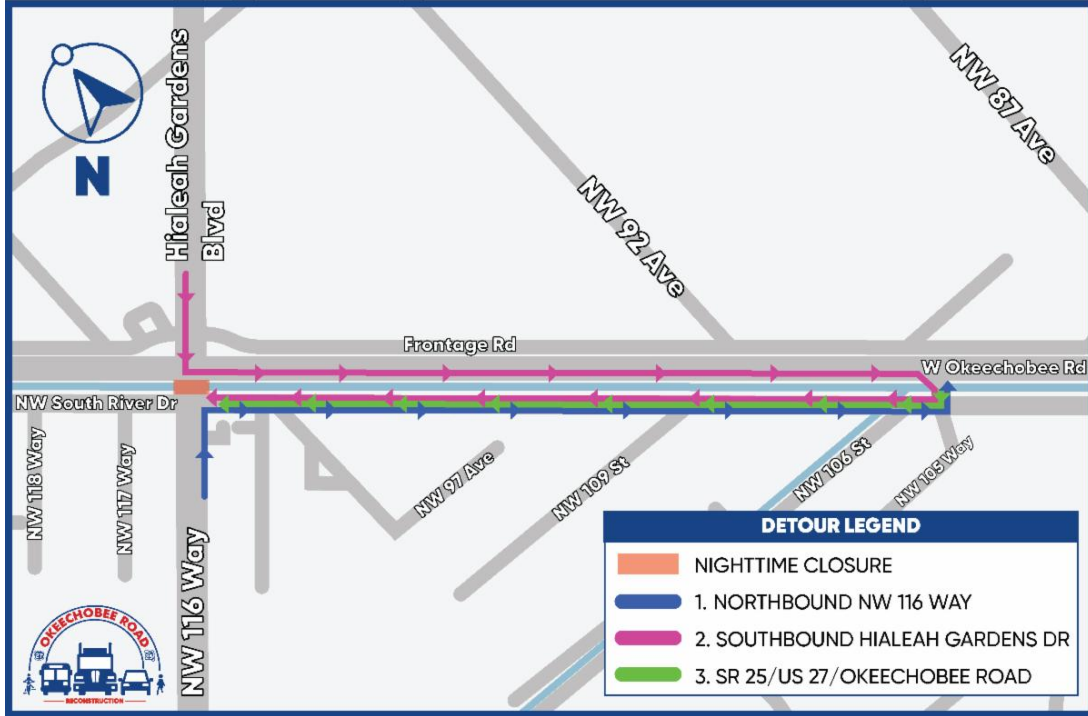
***PLEASE NOTE THAT SCHEDULES MAY CHANGE DUE TO WEATHER OR UNEXPECTED CONDITIONS.***

---

### **UPCOMING TRAFFIC PATTERNS AND LANE CLOSURES**

#### **Full Nighttime Closures of NW 116 Way Bridge**

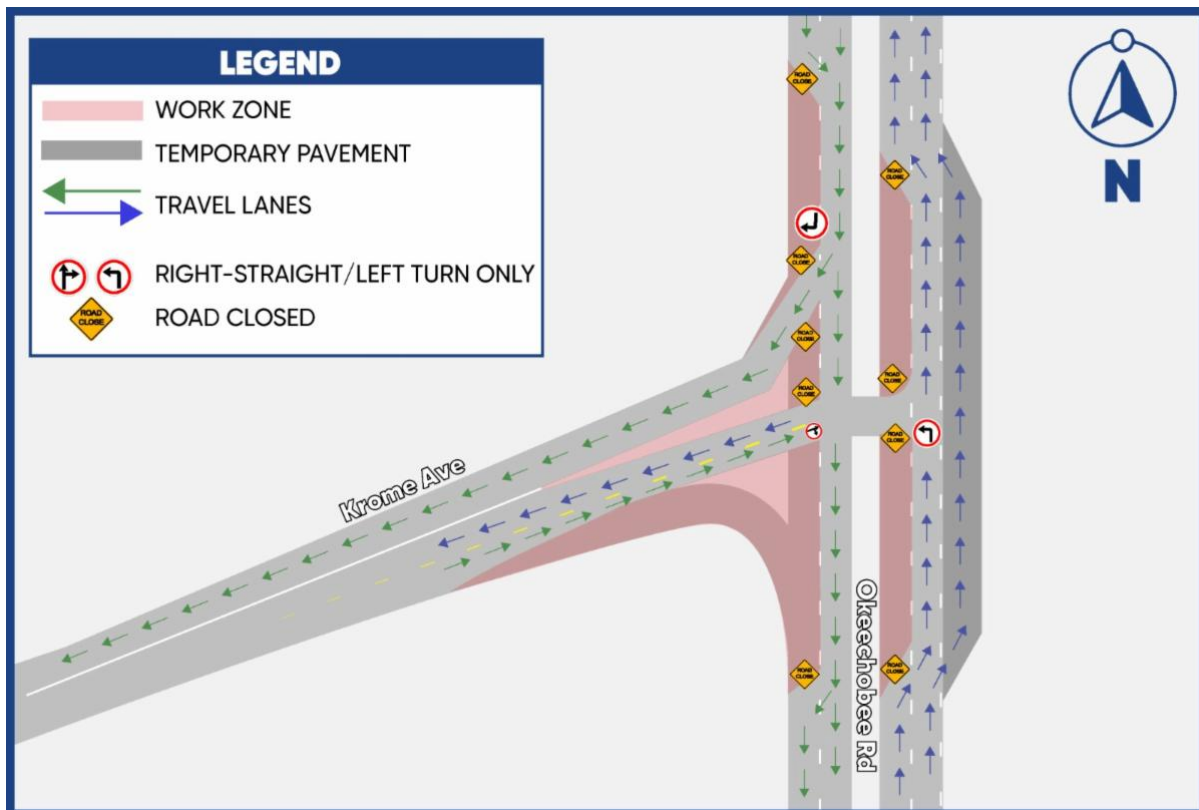
- Full closures of the NW 116 Way Bridge between NW South River Drive and Okeechobee Road will take place nightly between the hours of 9 p.m. to 5 a.m. on Monday, January 30, through Thursday, February 2, 2023. The closures will allow the contractor to complete work in this area. The following detours will be implemented:
  - Motorists heading northbound on NW 116 Way who wish to access Okeechobee Road will be detoured to turn right on to NW South River Drive, turn left on to NW 105 Way and proceed on to Okeechobee Road.
  - Motorists heading southbound on Hialeah Gardens Boulevard toward Okeechobee Road who wish to continue to NW 116 Way will have to turn left on to Okeechobee Road, make a right at NW 105 Way, make a right to NW S River Drive and turn left to continue south on to NW 116 Way.
  - Motorists heading westbound/eastbound on Okeechobee Road who wish to access NW 116 Way will be detoured to the NW 105 Way intersection, make a right at NW 105 Way, make a right to NW S River Drive, and turn left to continue south on to NW 116 Way.



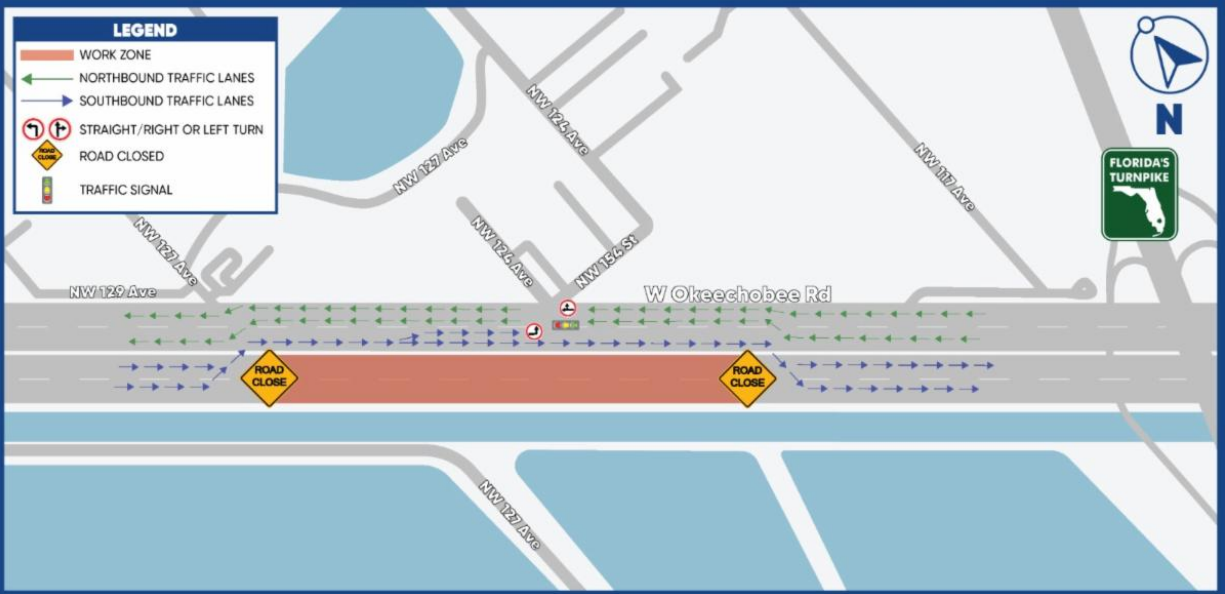
## CURRENT TRAFFIC PATTERNS AND LANE CLOSURES

### Segment One:

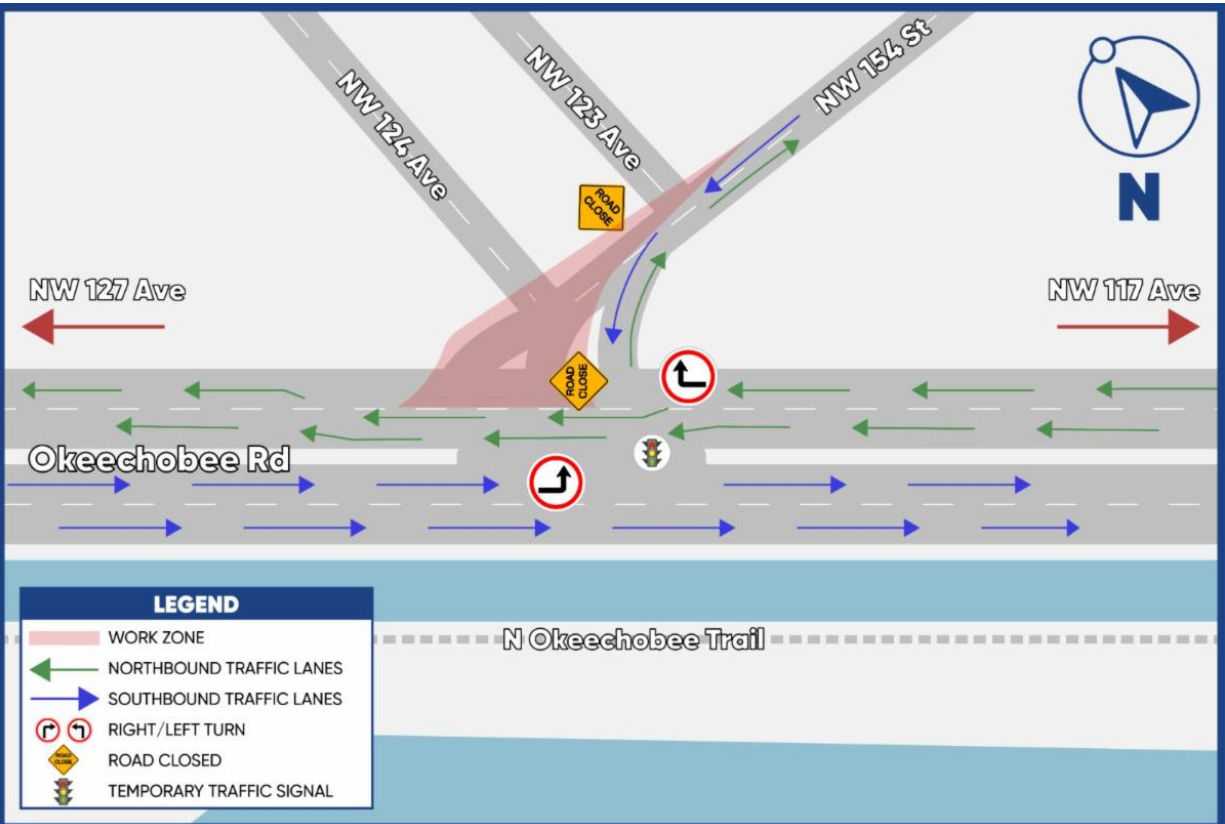
- Okeechobee Road and Krome Avenue Intersection



- Okeechobee Road, between NW 127 Avenue and NW 117 Avenue



- Okeechobee Road and NW 154 Street Intersection



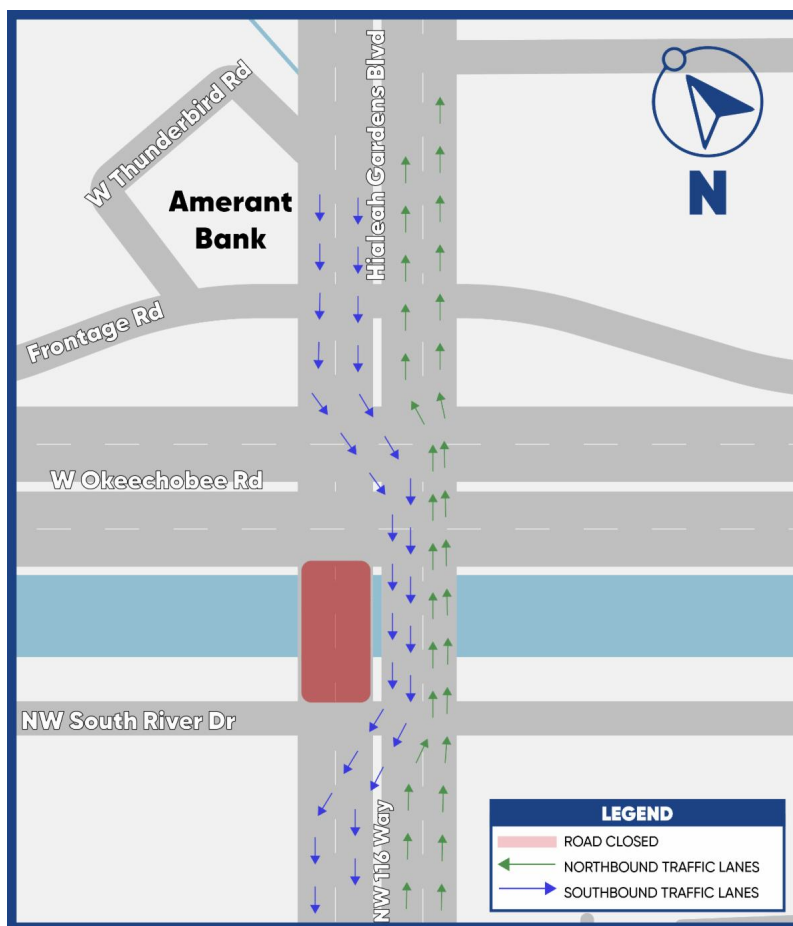
### Segment Two:

- Full Closure of the NW 114 St and Frontage Rd: The intersection of NW 114 St and Frontage Rd is closed until 5 a.m. on Tuesday, January 31, 2023. This closure allows the contractor to widen the intersection, install drainage pipes, curb and gutter and repave and restripe the road. Motorists wishing to access NW 114 St will be detoured through NW 92 Ave. Please use caution and follow the posted detour signage.

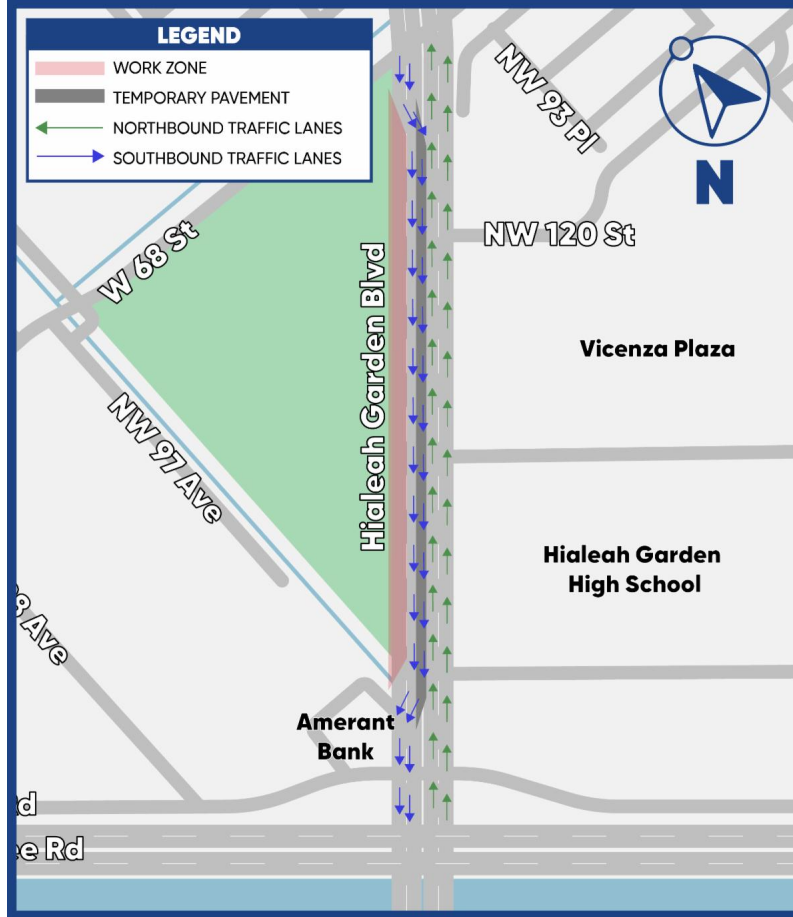


- NW 116 Way Bridge Traffic Shift

Watch the Video!



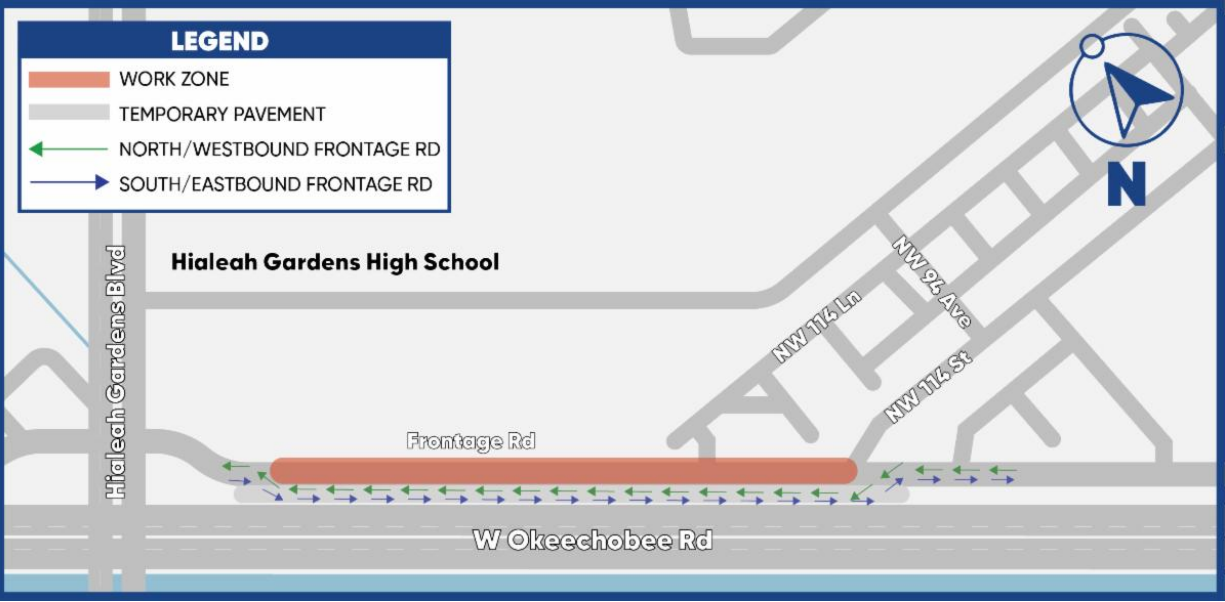
- Southbound Hialeah Gardens Boulevard from W 68 Street to Frontage Road



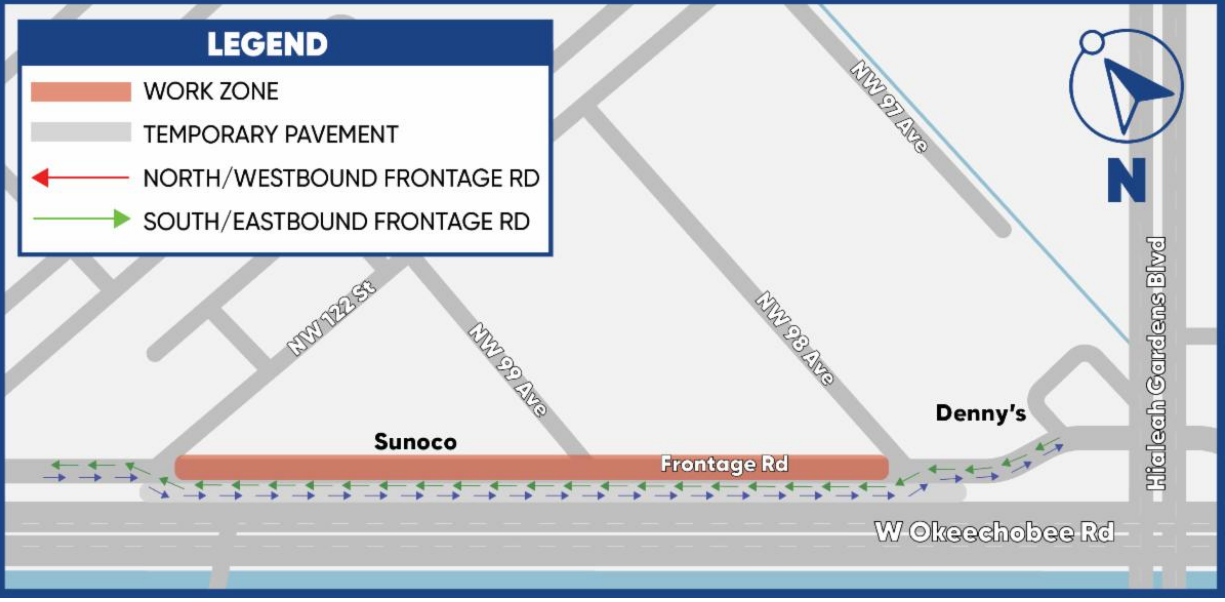
- Okeechobee Road, between NW 98 Avenue and NW 114 Lane



- Frontage Road, between east of Hialeah Gardens Boulevard and NW 114 Street



- Frontage Road, between NW 122 Avenue and NW 98 Avenue



**UPCOMING OUTREACH EVENTS**

- **February 2:** Pop-Up Event at Hialeah Gardens Branch Library 13451 NW 107th Ave, Hialeah Gardens, FL 33018 at 10 a.m.
- **February 8:** Office Hours with the Outreach team, see below:



## OFFICE HOURS

*with the outreach team*

The Okeechobee Community Outreach Team will be available to answer questions about ongoing construction activities and provide information related to the upcoming project segments

**CITY OF HIALEAH GARDENS CHAMBERS**  
**10001 NW 87 AVENUE, HIALEAH GARDENS, FL 33016**  
**THURSDAY, FEBRUARY 9, 2023**  
**10:30 A.M. - 12:30 P.M.**



### FOR MORE INFORMATION

Contact Senior Community Outreach Specialist Maria Alzate at [Maria@iscprgroup.com](mailto:Maria@iscprgroup.com) or at (305) 560-8218. You can also click below to visit our project website:

Corridorwide Website

Drivers are encouraged to log onto [www.fl511.com](http://www.fl511.com) to get real-time traffic and lane closure information.



Florida Department of Transportation, District Six | 1000 N.W. 111 Avenue, Miami, FL 33172

[Unsubscribe\\_monica@iscprgroup.com](mailto:Unsubscribe_monica@iscprgroup.com)

[Constant Contact Data Notice](#)

Sent by [maria@iscprgroup.com](mailto:maria@iscprgroup.com)