



State Road (SR) 25/US 27/Okeechobee Road Corridor Wide Construction Update

Below is a list of ongoing construction activities and lane closure information for each project segment.

ONGOING CONSTRUCTION ACTIVITIES

Segment One: From the Broward County Line to west of Florida's Turnpike

- Performing drainage work along:
 - Southbound Okeechobee Rd
 - Krome Ave
 - Frontage Rd
- Installing light pole bases along northbound and southbound Okeechobee Rd and the frontage roads
- Pouring concrete at the intersection of Okeechobee Rd and Krome Ave
- Installing Intelligent Transportation System conduits along northbound Okeechobee Rd
- Performing and paving roadway widening along northbound and southbound Okeechobee Rd

General Lane Closures

- Continuous single lane closure along the southbound and northbound inside lane from the Broward County Line to north of NW 154 Street.
- Nighttime construction activities are taking place from 6 p.m. to 5:30 a.m.
- Temporary single lane closures south of NW 154 Street, in both directions, between the nonpeak hours of 9 a.m. and 3:30 p.m.
- Temporary shoulder closures along SR 25/US 27/Okeechobee Road, in both directions, from 8 a.m. to 5 p.m.

Segment Two: From east of NW 107 Avenue to east of NW 116 Way

- Performing roadway widening and drainage installation work along Okeechobee Rd, NW 116 Way/Hialeah Gardens Blvd, and Frontage Rd
- Excavation work adjacent to Hialeah Gardens High School
- Installing the following:
 - 102-inch drainage pipe
 - Sewer pipe at Okeechobee Rd
 - Permanent light pole bases and roadway signage along Frontage Rd
- Pile driving operations and bridge construction at:
 - NW 116 Way Bridge
 - Okeechobee Rd and NW 98 Ave

General Lane Closures

- A single lane closure along NW 116 Way from Frontage Rd to W 68 St, in both the northbound and southbound direction.
- A single lane closure along Okeechobee Rd from NW 92 Ave to NW 107 Ave, in both the northbound and southbound direction.
- Traffic shift for all southbound lanes at the NW 116 Way Bridge. Travel lanes are reduced to two lanes in each direction along the bridge between Okeechobee Road and NW South River Drive.

Closures will take place Monday through Saturday during the following hours:

- 9 p.m. to 5:30 a.m. on weekdays
- 11 p.m. to 7:30 a.m. on weekends

PLEASE NOTE THAT SCHEDULES MAY CHANGE DUE TO WEATHER OR UNEXPECTED CONDITIONS.

PROGRESS PHOTOS

- Okeechobee Rd and the NW 116 Way Intersection



UPCOMING TRAFFIC PATTERNS AND LANE CLOSURES

Lane Closures along Southbound Okeechobee Road

- Travel lanes along southbound SR 25/Okeechobee Road will be closed approaching NW 116 Way/Hialeah Gardens Boulevard continuously from 9 p.m., Friday, January 20 until 5 p.m., Saturday, January 21, while workers install a concrete wall for a 102-inch drainage pipe at the Miami Canal.
 - One southbound through lane will be closed. The two turn lanes will be converted into through lanes. No left turns will be allowed.
- Drivers going south on SR 25/US 27/Okeechobee Road who want to go north on NW 116 Way/Hialeah Gardens Boulevard will turn left onto NW 138 Street, then turn right onto the Frontage Road and continue south to northbound NW 116 Way/Hialeah Gardens Boulevard.

Full Closure of the NW 114 St and Frontage Rd

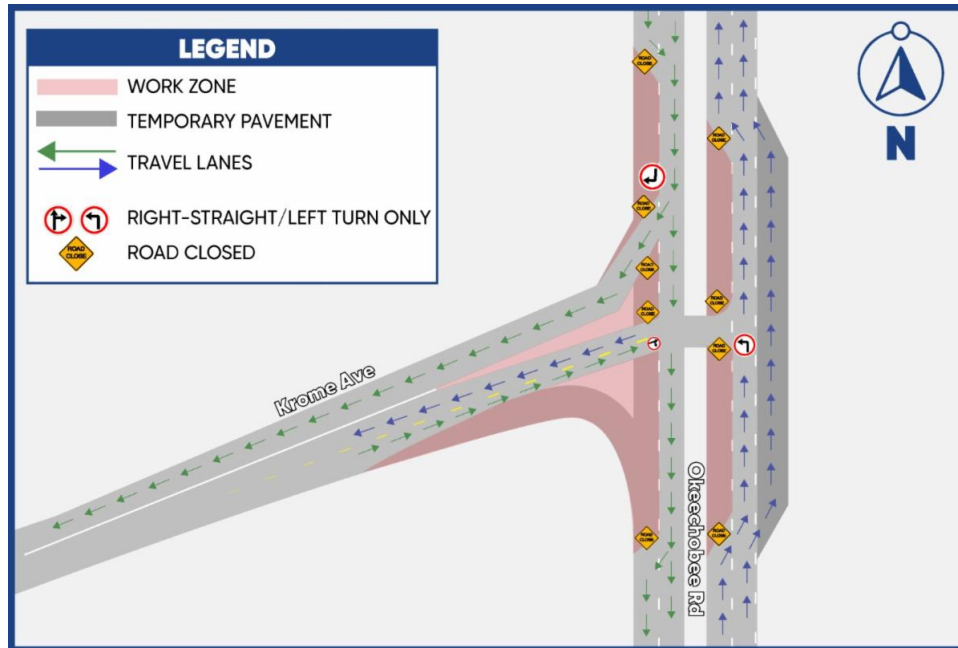
- The intersection of NW 114 St and Frontage Rd will be closed from 9 p.m. on Sunday, January 22, to 5 a.m. on Tuesday, January 31, 2023. This closure will allow the contractor to widen the intersection, install drainage pipes, curb and gutter and repave and restripe the road. Motorists wishing to access NW 114 St will be detoured through NW 92 Ave. Please use caution and follow the posted detour signage.



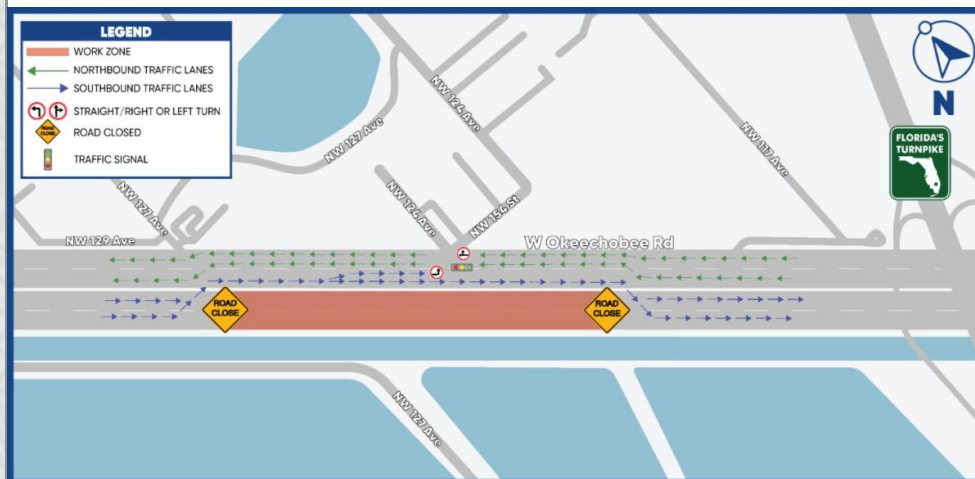
CURRENT TRAFFIC PATTERNS AND LANE CLOSURES

Segment One:

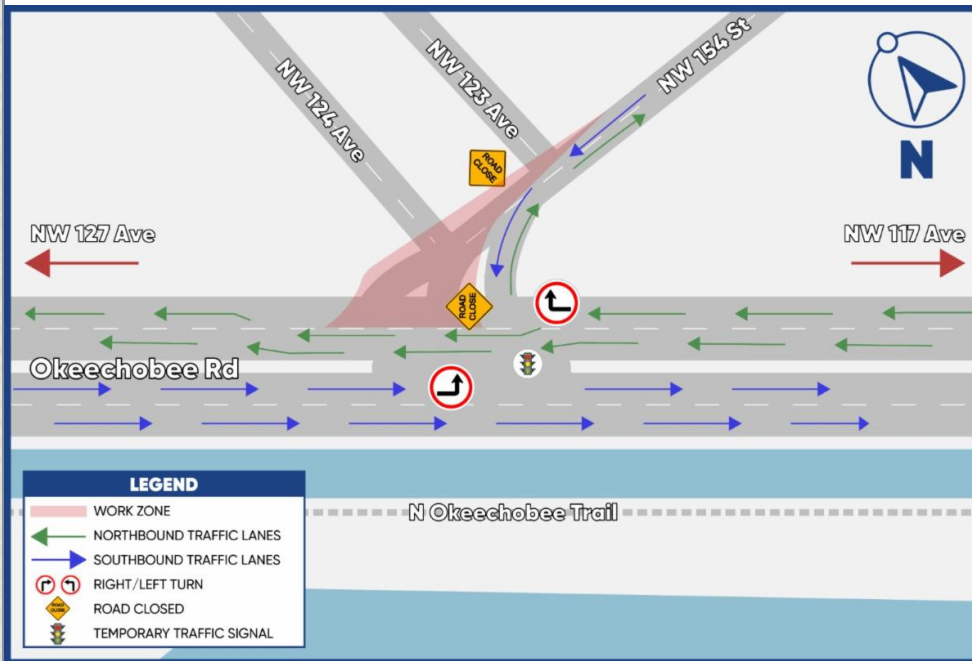
- Okeechobee Road and Krome Avenue Intersection



- Okeechobee Road, between NW 127 Avenue and NW 117 Avenue



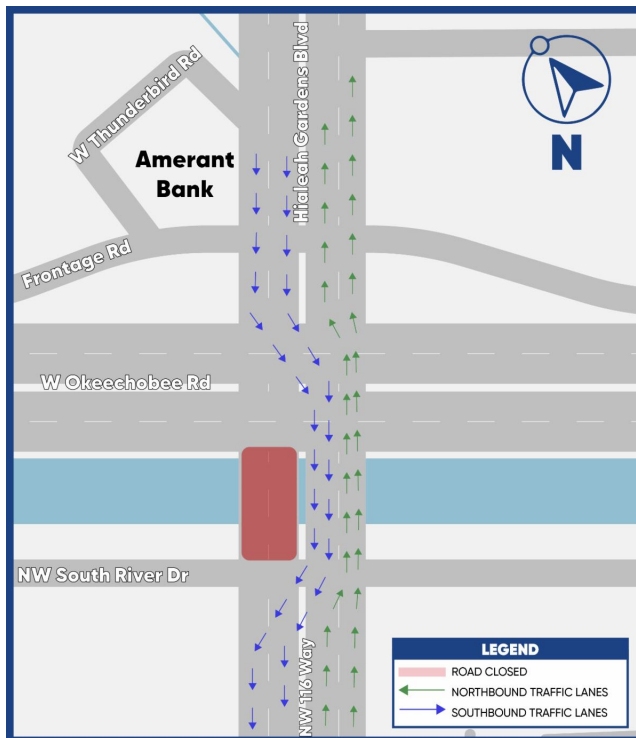
- Okeechobee Road and NW 154 Street Intersection



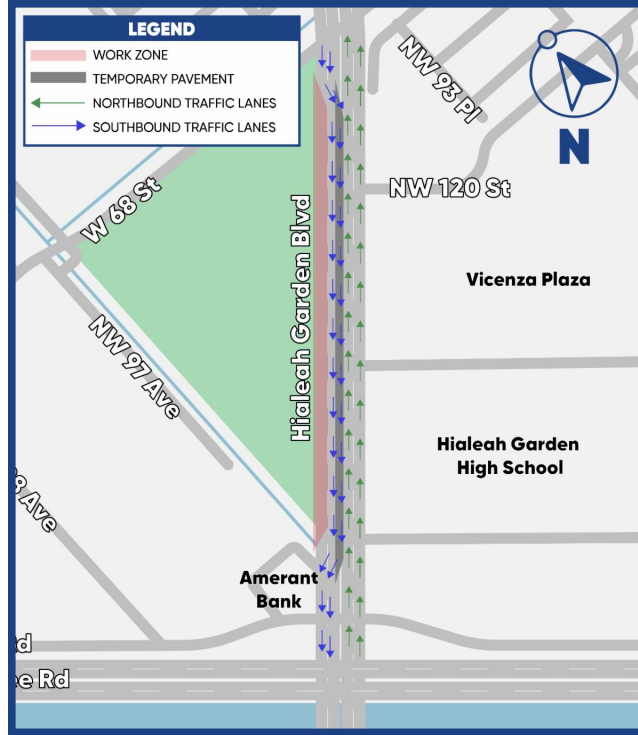
Segment Two:

- NW 116 Way Bridge Traffic Shift

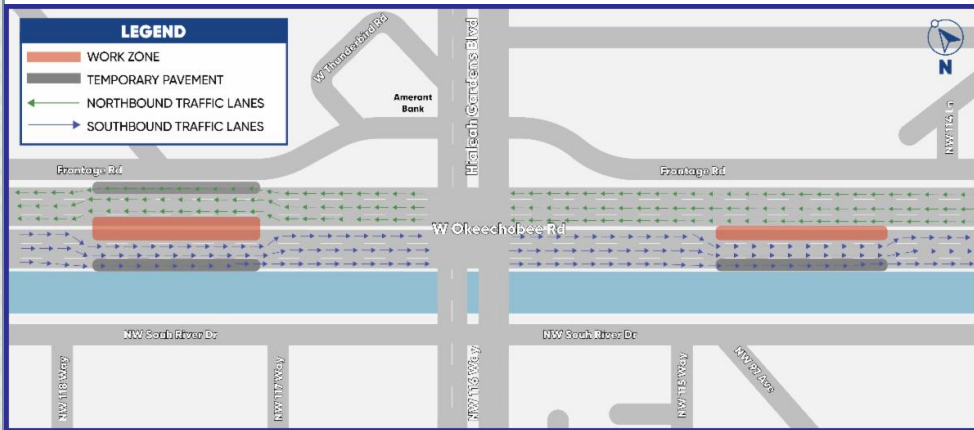
Watch the Video!



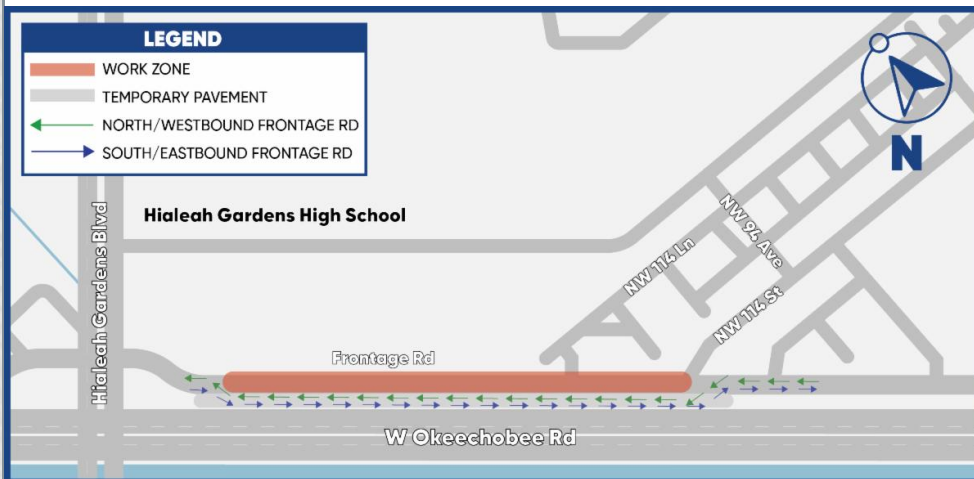
- Southbound Hialeah Gardens Boulevard from W 68 Street to Frontage Road



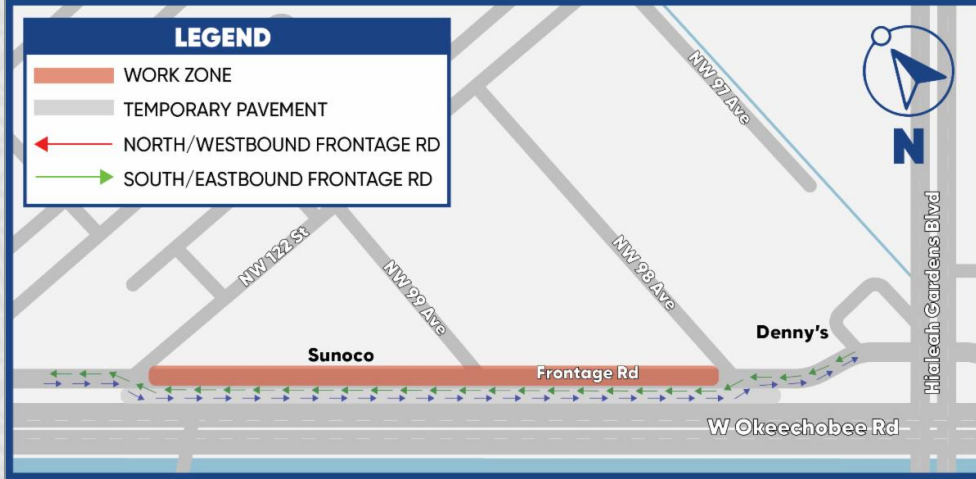
- Okeechobee Road, between NW 98 Avenue and NW 114 Lane



- Frontage Road, between east of Hialeah Gardens Boulevard and NW 114 Street



- Frontage Road, between NW 122 Avenue and NW 98 Avenue



FOR MORE INFORMATION

Contact Senior Community Outreach Specialist Maria Alzate at Maria@iscprgroup.com or at (305) 560-8218. You can also click below to visit our project website:

Corridorwide Website

Drivers are encouraged to log onto www.fl511.com to get real-time traffic and lane closure information.



Florida Department of Transportation, District Six | 1000 N.W. 111 Avenue, Miami, FL 33172

[Unsubscribe monica@iscprgroup.com](mailto:unsubscribe_monica@iscprgroup.com)

[Constant Contact Data Notice](#)

Sent by maria@iscprgroup.com