



# SR 9A / I-95 PD&E STUDY

From South of NW 62nd Street to North of NW 143rd Street

FPID NO.: 414964-8-22-01

ETDM NO.: 14418

## Public Kick-Off Meeting

November 21, 2024



# Presenters and Panelists



**Bao-Ying Wang, P.E., CPM**  
FDOT Project Manager



**Godfrey Lampley, PE, PTOE**  
Consultant Project Manager



**Robert T. Carballo, PE**  
Consultant  
Technical Advisor



**Monica Diaz**  
Consultant Community  
Outreach Specialist

# Elected Officials

We would like to recognize any federal, state, county, or city officials who may be present.

Please stand or select the raise hand feature on the control panel.



# Agenda

Introduction & Rules of Engagement

01

Study Overview & Background

02

Existing Conditions

03

Next Steps

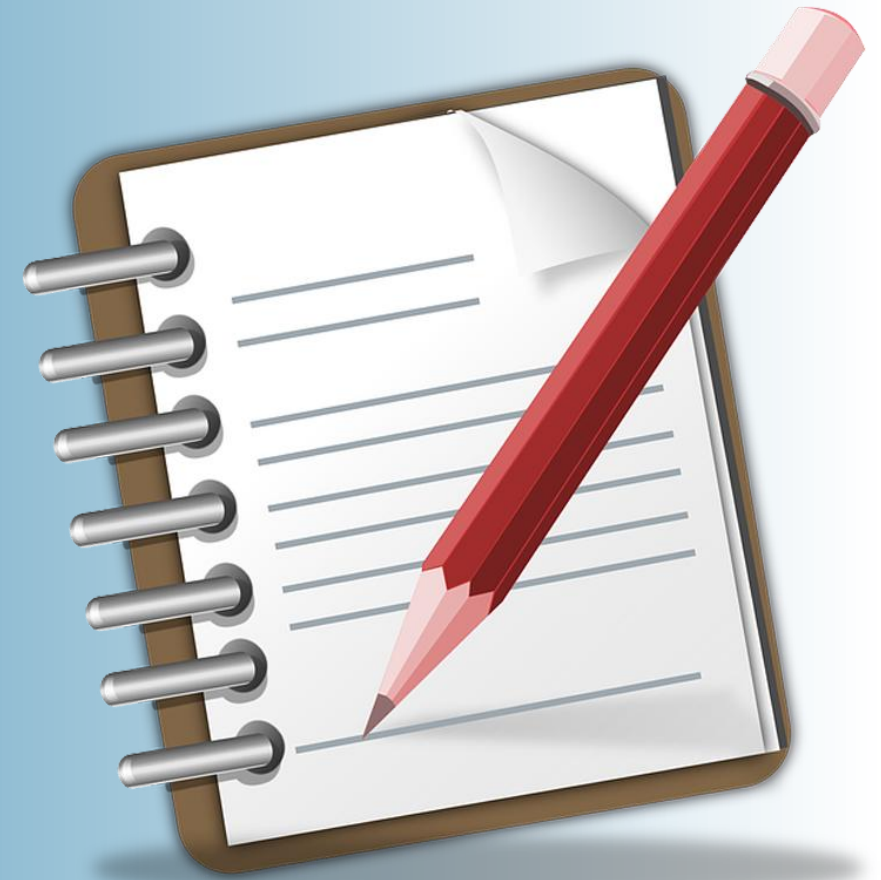
04

Project Schedule

05

Question & Answer Session

06





# How to Participate



## Virtual

Virtually via a computer, tablet, or smartphone using GoToWebinar.



## In-person

**Arcola Lakes Branch Library 8240 Northwest 7th Avenue Miami, FL 33150**

Attendees may fill out a comment form or a speaker card to provide verbal comment.



## Dial-in

Dial-in Attendees are in “listen only” mode If you are calling via a phone, you can submit your comments via the project website: [www.southflroads.com/sr9apde](http://www.southflroads.com/sr9apde)

# How to Participate

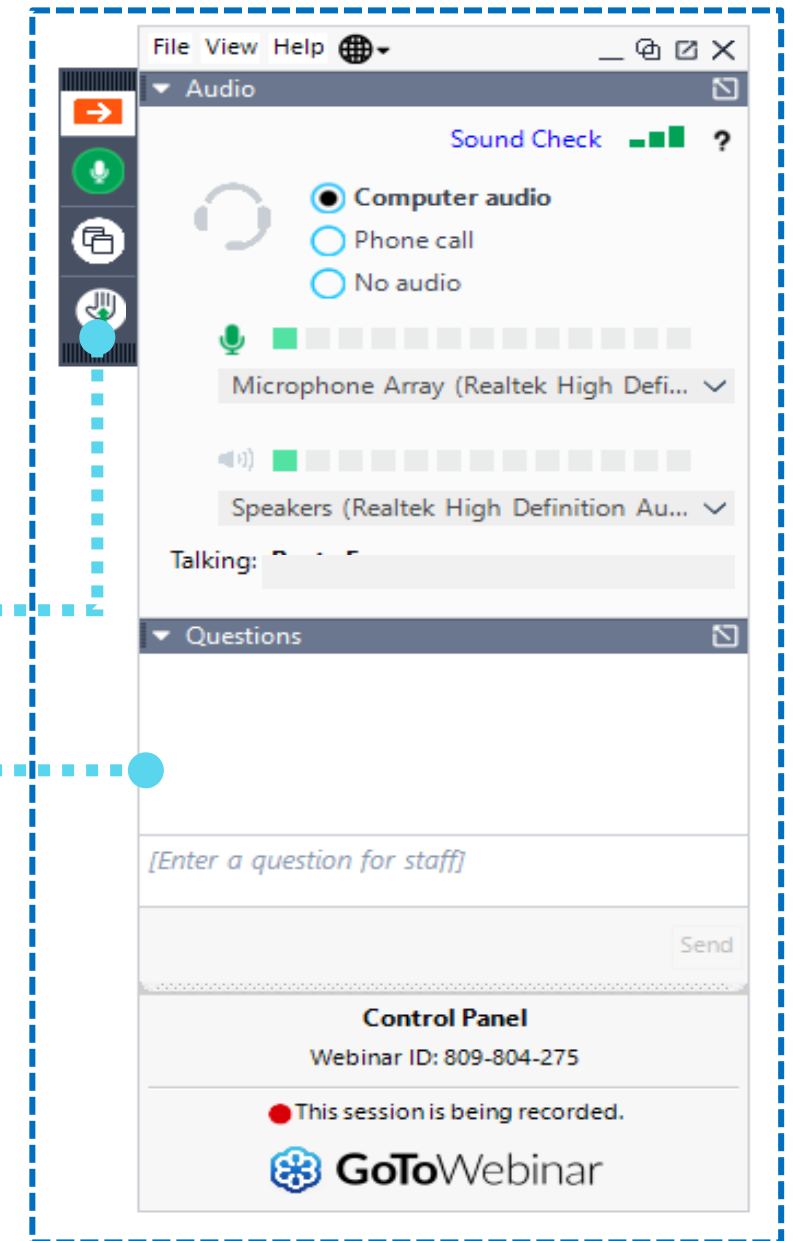
All Virtual (online) attendees will remain muted throughout the Meeting.

To submit a question during the question period

- Call
- **Raise Hand during comment period. You will be unmuted in the order hands were raised**
- Submit comment via question box

Call technical assistance

- 1-800-418-0524



# GoToWebinar Instructions – Need Help?

**Please let us know. Staff will be on-hand to assist during the meeting if you have a technical issue.**

*Type your issue in Question Pane of the Control Panel. We will do our best to assist you.*

monica@iscprgroup.com  
(305) 640-8122

**¿Habla español?**

*Si necesita traducción por favor comuníquese con nosotros.*

*(305) 640-8122*

---

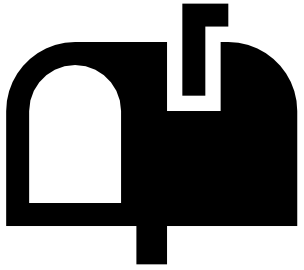
**Pale kreyòl?**

*Si ou bezwen tradiksyon tanpri kontakte nou.*

*(305) 640-8122*



# Public Notices



**Property  
owner/tenant letters**



**Emails to project  
contacts list**



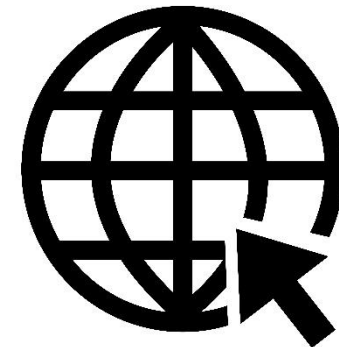
**Newspaper/Radio  
Advertisement**



**Florida Administrative  
Register**



**Social Media**



**Website**

# Title VI Non-discrimination and Contacts

The Florida Department of Transportation is required to comply with various **non-discrimination laws** and **regulations**, including **Title VI of the Civil Rights Act of 1964**. **Public participation is solicited without regard to race, color, national origin, age, sex, religion, disability, or family status.**

Persons wishing to express any concerns about Title VI may do so by contacting either:

Mark Plass, P.E.  
**FDOT District Six Title VI Coordinator**  
1000 NW 111 Avenue  
Miami, Florida 33172  
Telephone No.: (305)-470-5219  
Toll Free: 1-800-435-2368 ext. 5219  
[mark.plass@dot.state.fl.us](mailto:mark.plass@dot.state.fl.us)

Stefan Kulakowski  
**State Title VI Coordinator**  
605 Suwannee Street  
Tallahassee, Florida 32399  
Telephone No.: 850.414.4742  
Toll Free: (866) 374-3368 ext. 4742  
[stefan.kulakowski@dot.state.fl.us](mailto:stefan.kulakowski@dot.state.fl.us)

**[Title VI Contacts \(fdot.gov\)](https://www.fdot.gov/titlevi)**

# National Environmental Policy Act (NEPA) Assignment

The environmental review, consultation, and other actions required by applicable federal environmental laws for this project are being, or have been, carried-out by FDOT pursuant to 23 U.S.C. § 327 and a Memorandum of Understanding dated May 26, 2022, and executed by the Florida Highway Administration (FHWA) and FDOT.

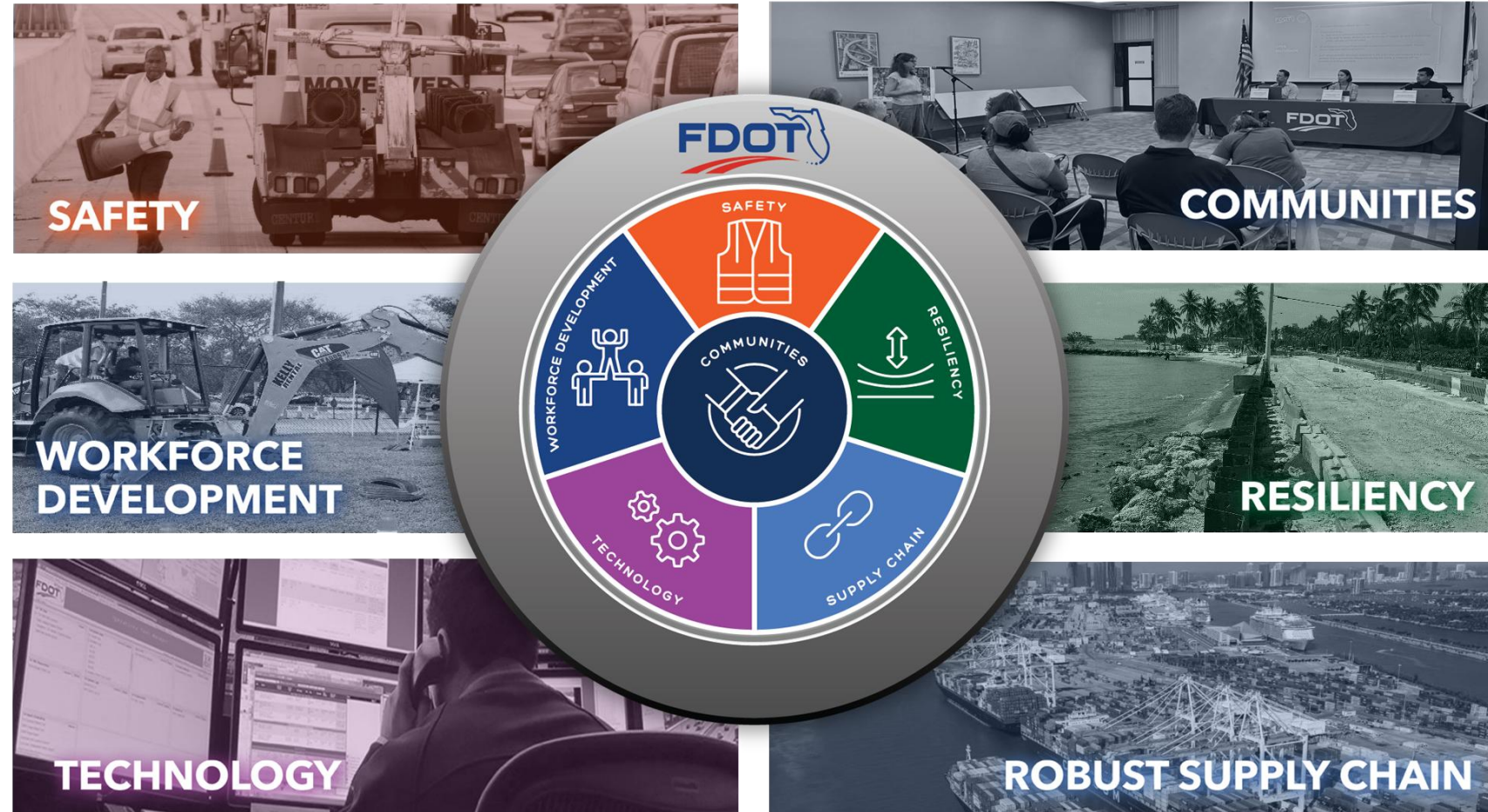


# FDOT Compass

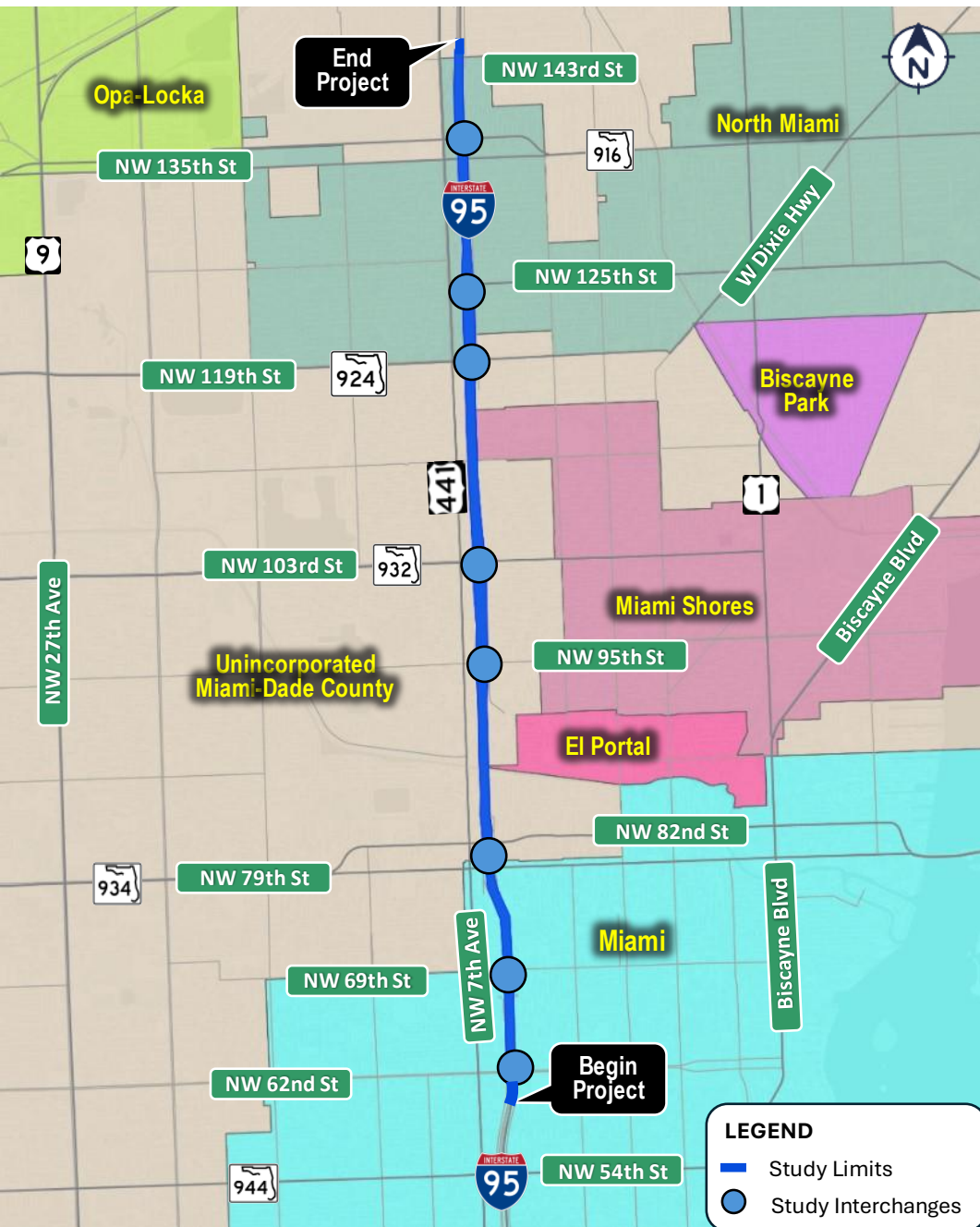
FDOT is dedicated to maintaining and enhancing the state's infrastructure to meet the needs of both residents and visitors, now and in the future.

FDOT focuses on critical areas like communities, safety, resiliency, supply chain, and workforce development to achieve this.

FDOT recognizes the unique needs of each community and strives to create a transportation system that improves connectivity, enhances the quality of life, and aligns with a shared community vision.



# Project Location



- Approximately six miles of SR 9A / I-95 Improvements
- Corridor crosses through
  - Unincorporated Miami-Dade County
  - Incorporated Municipalities of
    - City of Miami, City of North Miami, Miami Shores, and El Portal



## Existing SR 9A / I-95 Roadway:

- Urban Principal Arterial Interstate
- Four general-use lanes and two express lanes in each direction
- Eight Interchanges



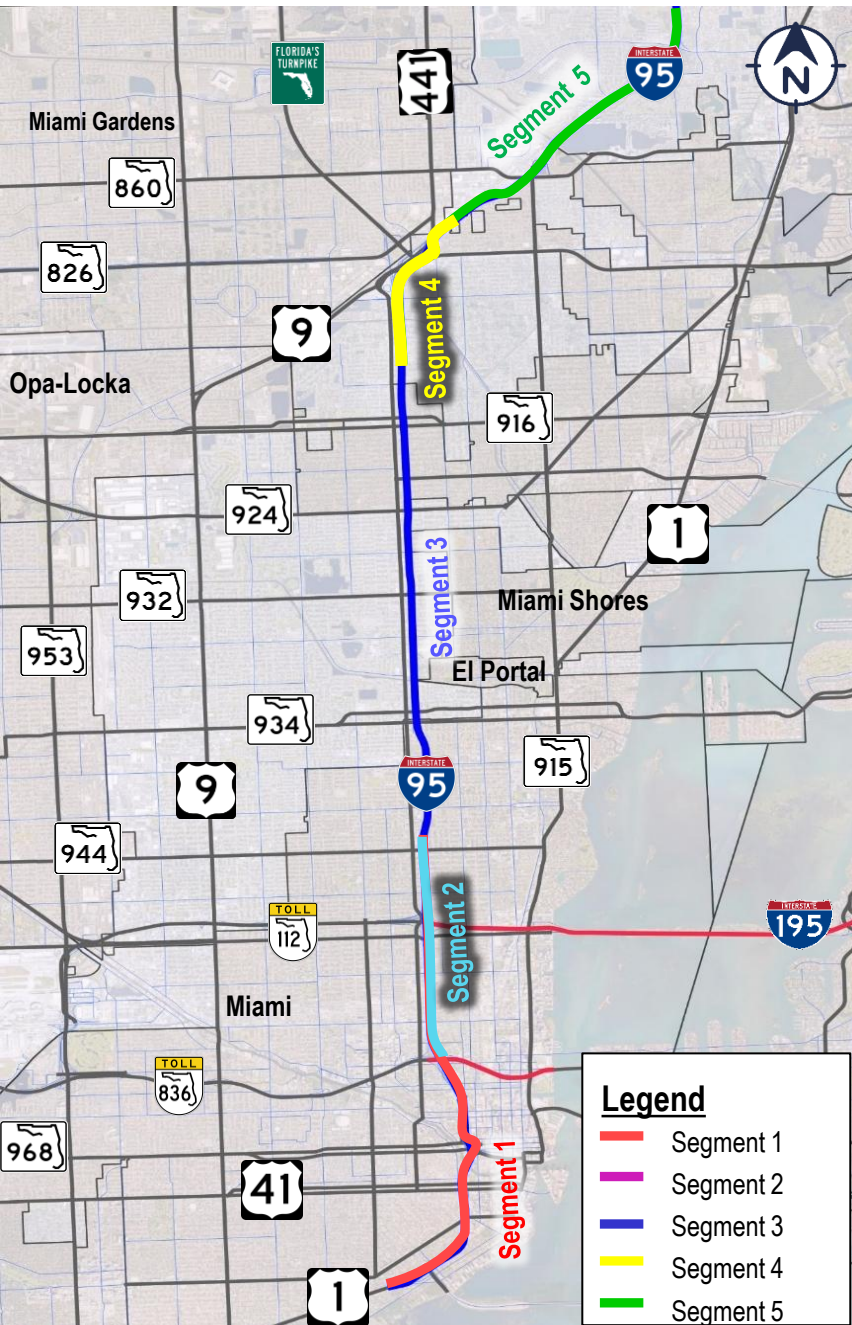
Pinnacle Park Apartments located at I-95 and NW 79th Street NW quadrant

## Adjacent Land Use

- West Side – commercial
- East Side – residential
- Other institutional and recreational uses



# Corridor History



1964

I-95 segment from Miami to Ft Lauderdale completed

1995

I-95 widened to provide additional lane to accommodate traffic demand

2009

I-95 Express Lanes Phase 1A constructed for congestion management

2017

I-95 Concrete Pavement Rehabilitation with full replacement of existing concrete slabs

2019

I-95 Corridor Planning Study from US 1 / SR 5 to the Broward County Line completed and divided into 5 segments

2021

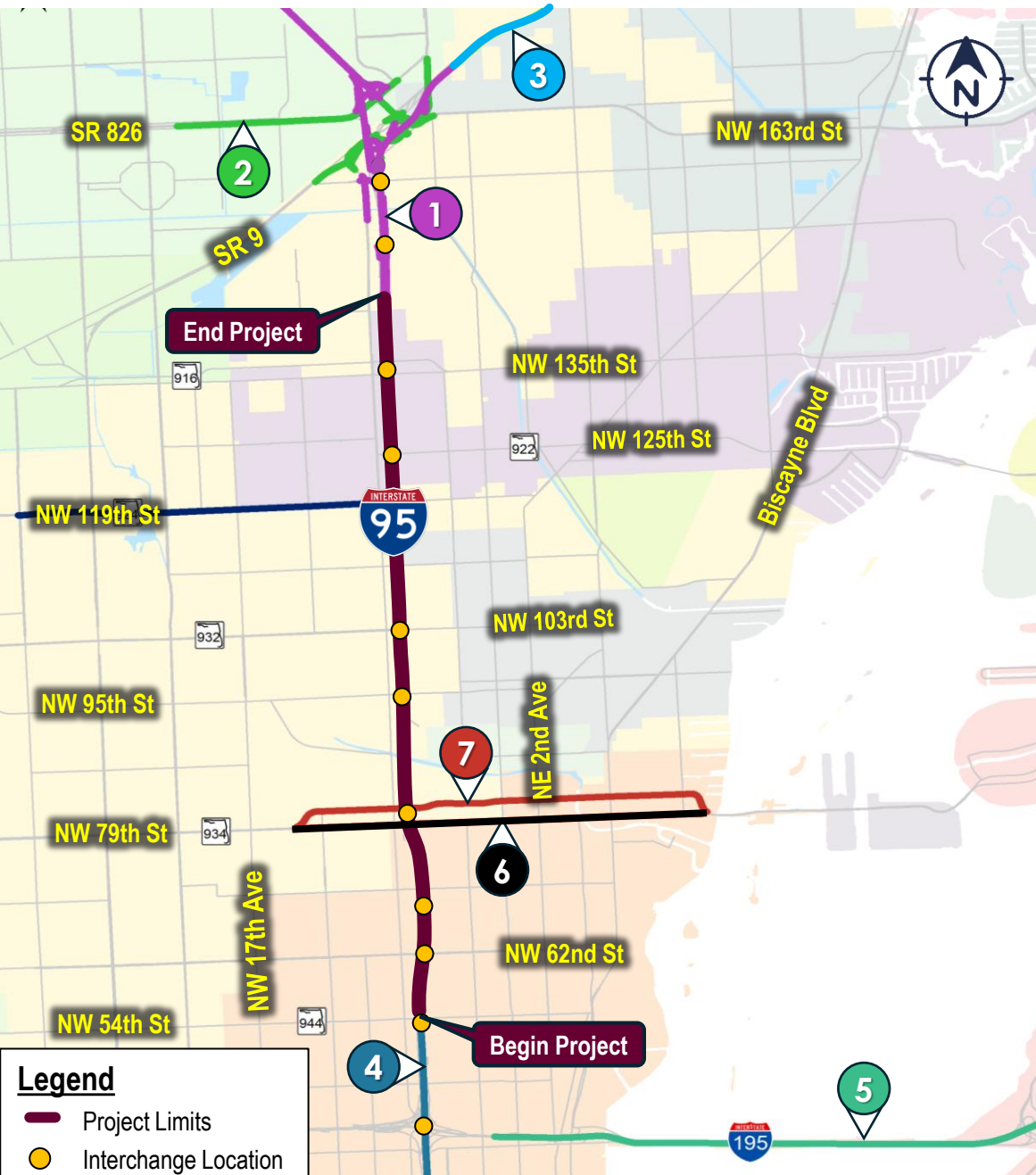
PD&E Study for Segment 5 from South of SR 860/Miami Gardens Drive to the Broward County Line

2024

PD&E Study for Segment 3 from South of NW 62nd Street to North of NW 143rd Street



# On-Going Projects



## 7 major programmed or on-going projects within project influence area

- 1 Golden Glades Interchange Improvements
- 2 SR 826 Connector At Golden Glades Interchange and Various Ramps
- 3 SR 9A/I-95 from South of Miami Gardens Drive to Broward County Line (*Segment 5 – PD&E Study*)
- 4 SR 9A/I-95 from US-1/South Dixie Highway to South of NW 62nd Street (*Segment 1 and 2 PD&E Studies*)
- 5 SR 112/I-195 from NW 12th Avenue to SR 907 / Alton Road (*I-195 PD&E Study*)
- 6 SR 934/NW 79th Street from West of I-95 (13th Court) to 79th Street Causeway
- 7 SR 934/NW 81st / 82nd Street from West of I-95 (13th Court) to 79th Street Causeway

# What is a PD&E Study?

## TRANSPORTATION DELIVERY PROCESS

1 PLANNING

2 PROJECT DEVELOPMENT AND ENVIRONMENTAL (PD&E) STUDY

3 DESIGN

4 RIGHT OF WAY

5 CONSTRUCTION

6 MAINTENANCE

A PD&E Study is a comprehensive study that evaluates social, economic, and environmental effects associated with a proposed transportation improvement so FDOT can reach a decision on the location, and conceptual design to meet the project's purpose and need.

## WHAT IS INVOLVED?



### Engineering

Conduct preliminary engineering analysis and identify potential design solutions



### Environmental

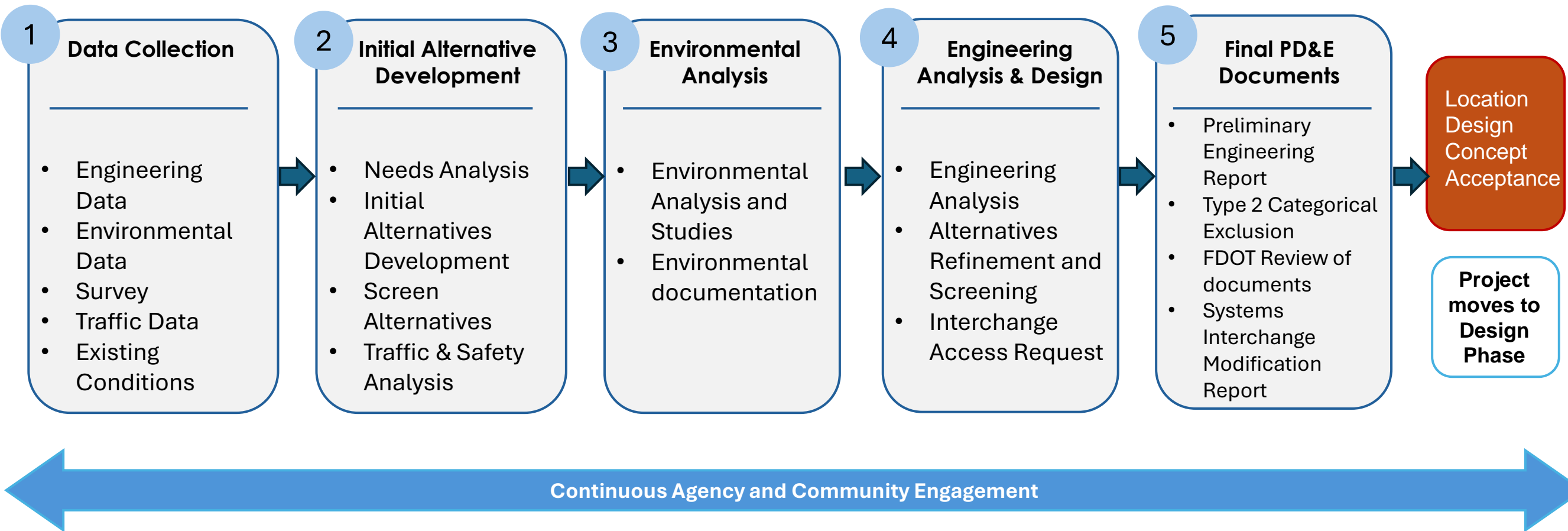
Evaluate options to avoid, minimize, or mitigate potential environmental impacts



### Public Involvement

Coordinate with federal, state and local agencies and engage public in project development

# PD&E Process





# Project Purpose and Need

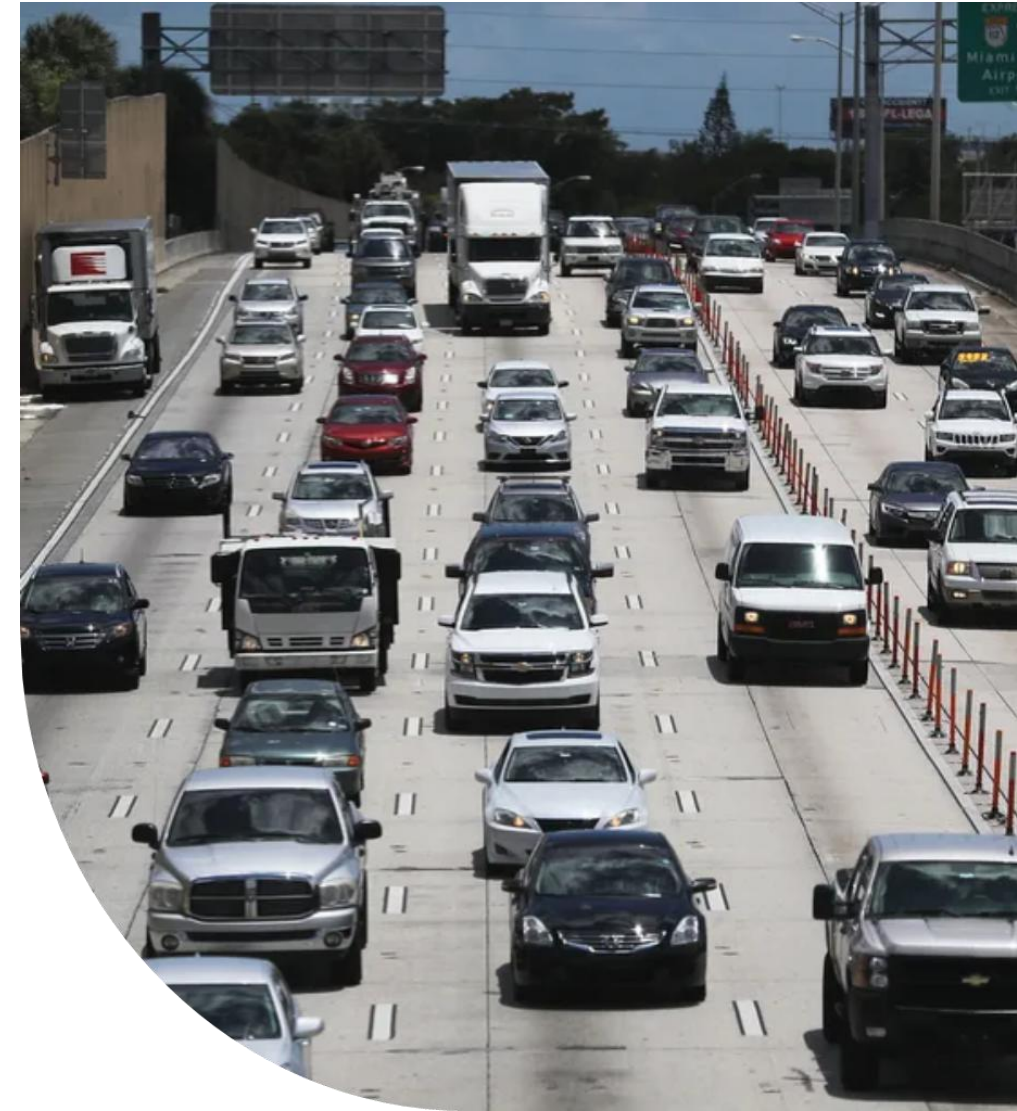


## The purpose of the study is to:

- ✓ Address the operational deficiencies to relieve current and anticipated future congestion along the SR 9A / I-95 corridor
- ✓ Preserve the operational integrity and regional functionality of SR 9A / I-95

## The project's other key goals include:

- Support regional transportation network
- Enhance safety, mobility, and circulation
- Enhance emergency evacuation and response times
- Upgrade facilities through sustainable and resilient investments
- Implement improvements that are sensitive to impacts on the community



# Project Need



## Capacity and Transportation Demand

- Population within Miami-Dade County is anticipated to grow by 22% and employment by 29% between 2020 to 2050 (2050 LRTP).
- SR 9A / I-95 operational issues will get worse over time.



## System Linkage

- SR 9A / I-95 is a major interstate route connecting some of the most populated urban areas in the country.
- SR 9A / I-95 plays a vital role in facilitating both commuter and freight traffic throughout the state.



## Emergency Evacuation

- Critical component of the emergency evacuation route network designated by the Florida Division of Emergency Management.
- Connects to three designated evacuation routes: SR 934 / NW 79th Street, SR 924 / NW 119th Street, and SR 922 / NW 125th Street.





# Existing Conditions | Roadway



- Eight General Use Lanes and four Express Lanes
- Existing travel lane widths vary from 11-ft to 12-ft
- Existing shoulder widths vary from 6-ft to 12-ft
- Design Speed of 60 mph and Posted Speed of 55 mph
- Existing Right of Way varies from 213-ft to 390-ft with wider widths at interchanges





# Existing Conditions | Traffic

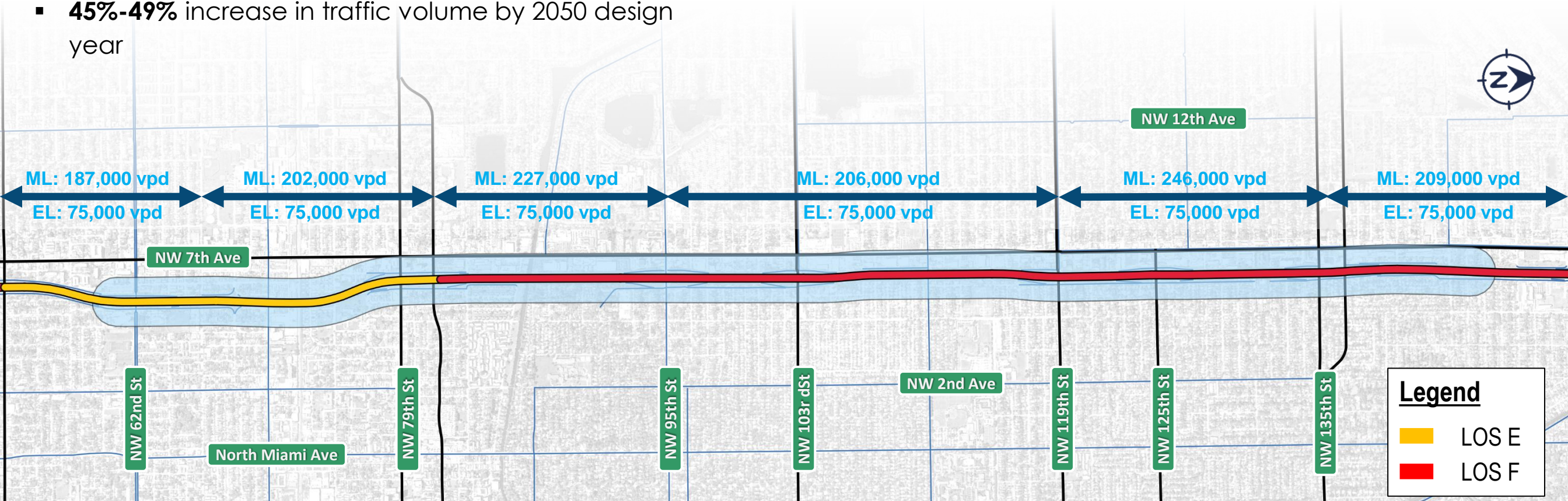
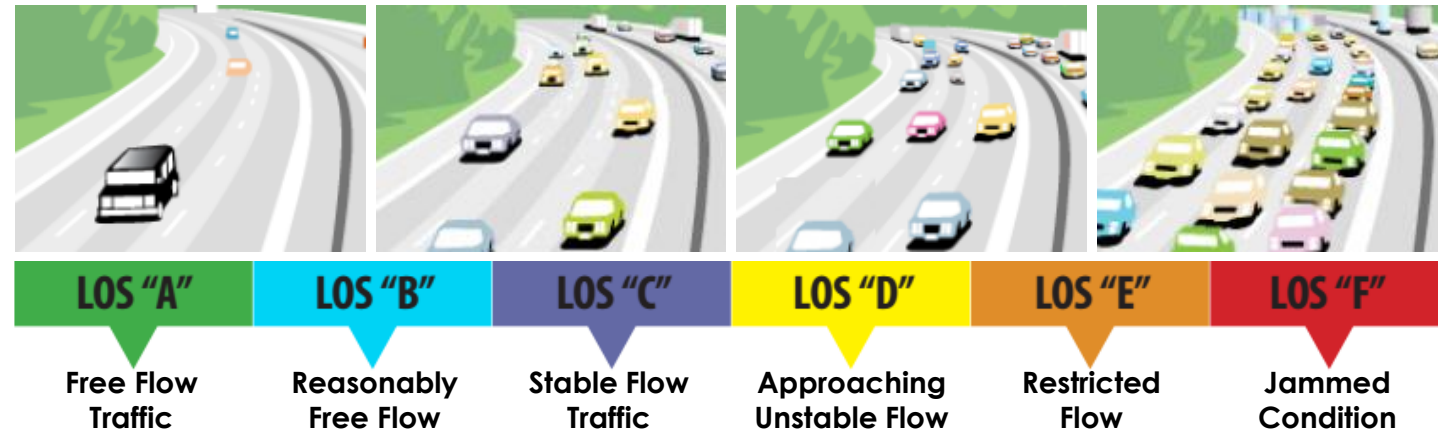


## 2023 Existing Average Annual Daily Traffic (AADT)

- **Mainline:** 187,000 to 246,000 vehicles per day
- **Express Lanes:** 75,000 vehicles per day

## 2050 AADT Traffic Forecast

- **Mainline:** 279,500 to 358,000 vehicles per day
- **Express Lanes:** 112,000 vehicles per day
- **45%-49%** increase in traffic volume by 2050 design year



### Legend

- LOS E
- LOS F



# Existing Conditions | Safety

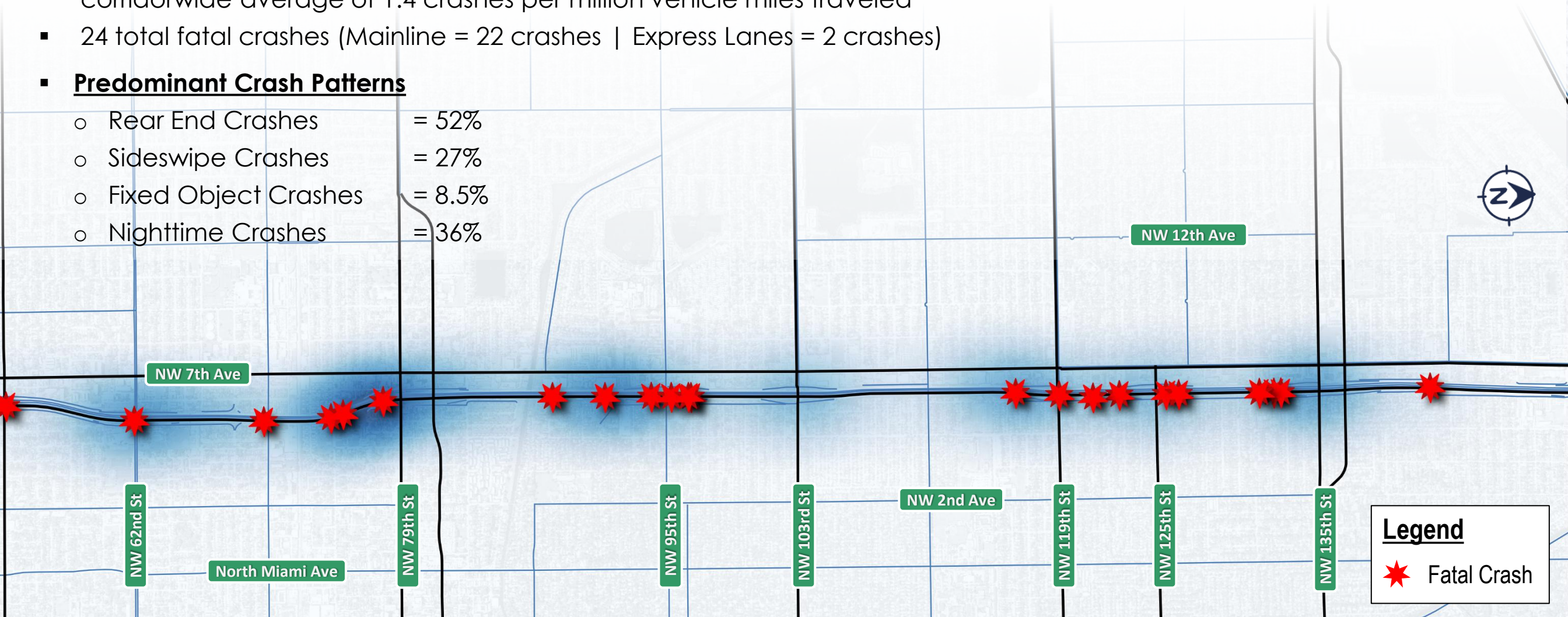


## Crash Data (Latest 5 Years: 2019 – 2023)

- 1432 crashes/year (Mainline = 1269 crashes/year | Express Lanes = 163 crashes/year)
- Average Crash Rate = 2.0 crashes per million vehicle miles traveled, slightly higher than the corridorwide average of 1.4 crashes per million vehicle miles traveled
- 24 total fatal crashes (Mainline = 22 crashes | Express Lanes = 2 crashes)

### ▪ Predominant Crash Patterns

- Rear End Crashes = 52%
- Sideswipe Crashes = 27%
- Fixed Object Crashes = 8.5%
- Nighttime Crashes = 36%



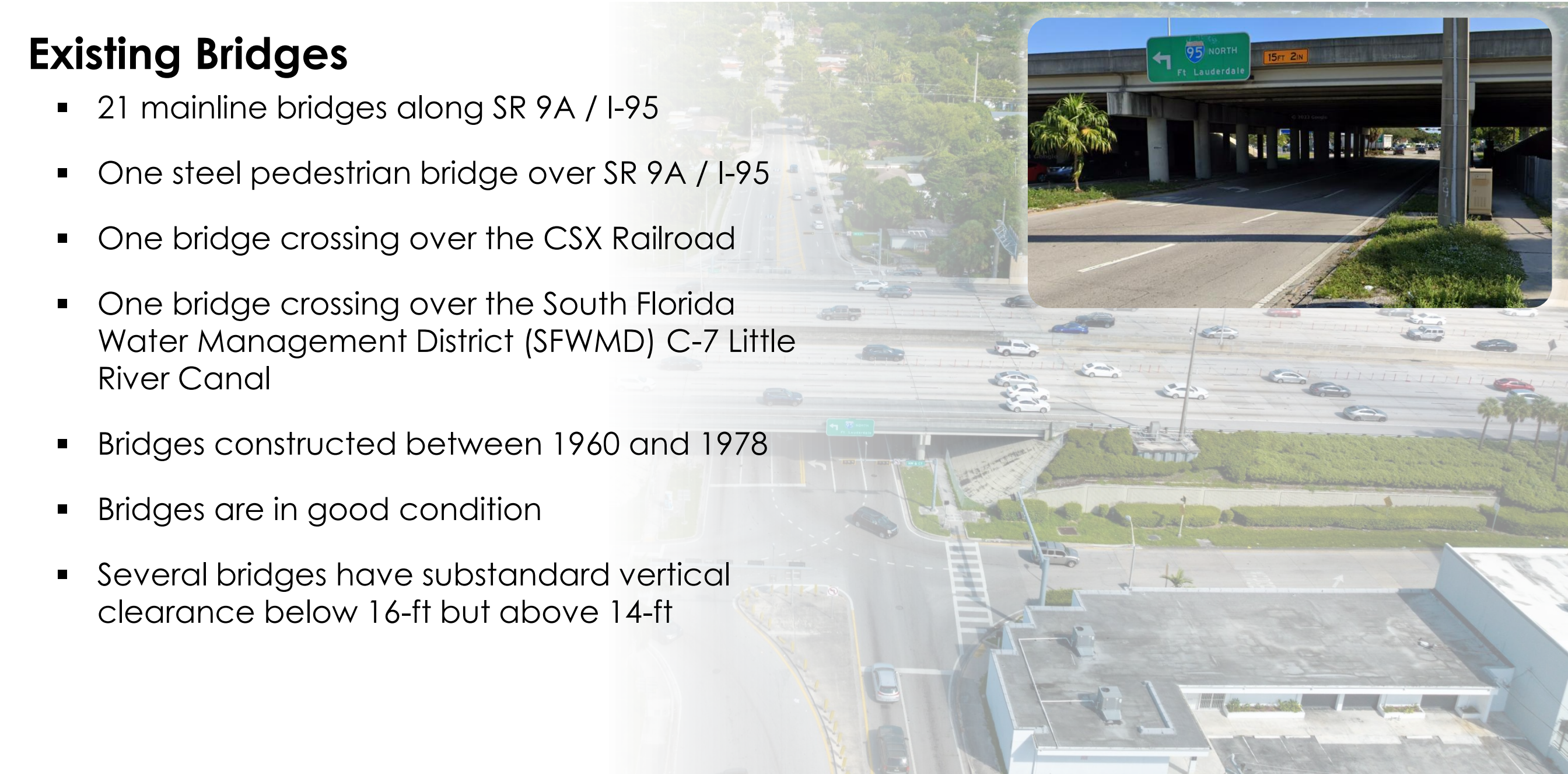
### Legend

★ Fatal Crash



## Existing Bridges

- 21 mainline bridges along SR 9A / I-95
- One steel pedestrian bridge over SR 9A / I-95
- One bridge crossing over the CSX Railroad
- One bridge crossing over the South Florida Water Management District (SFWMD) C-7 Little River Canal
- Bridges constructed between 1960 and 1978
- Bridges are in good condition
- Several bridges have substandard vertical clearance below 16-ft but above 14-ft





# Next Steps | Engineering Analysis



## Traffic Forecast & Analysis

- Traffic Data Collection Ongoing ( 2024 Summer to Fall)
- Perform Traffic Demand Forecast Analysis for future years
- Traffic Operational Analysis
  - I-95 Mainline
  - I-95 Express Lanes
  - Interchanges
  - Connecting Arterials
- Coordinate Multimodal Improvements along connecting arterials within the limited access interchange footprints





# Next Steps | Engineering Analysis



## Alternatives Development

- **No-Build Alternative** - Assumes no corridor improvements
- **Transportation Systems Management and Operations (TSM&O)**
- **Build Alternatives – Multi-Step Process**
  - **Tier 1 – Conceptual Alternatives**
    - Systemwide Concepts – Typical Sections
    - Interchange Concepts and Enhancements
    - Express Lanes Connectivity
  - **Tier 2 – Refined Alternatives**
    - Geometric requirements to minimize impacts
    - Right of way needs for proposed improvements
    - Transit, Freight and Multimodal Enhancements
    - Incorporate TSM&O Improvements
- **Selection of Preferred Alternative**
  - Right of way impacts
  - Environmental considerations
  - Conceptual Construction Costs



## Drainage

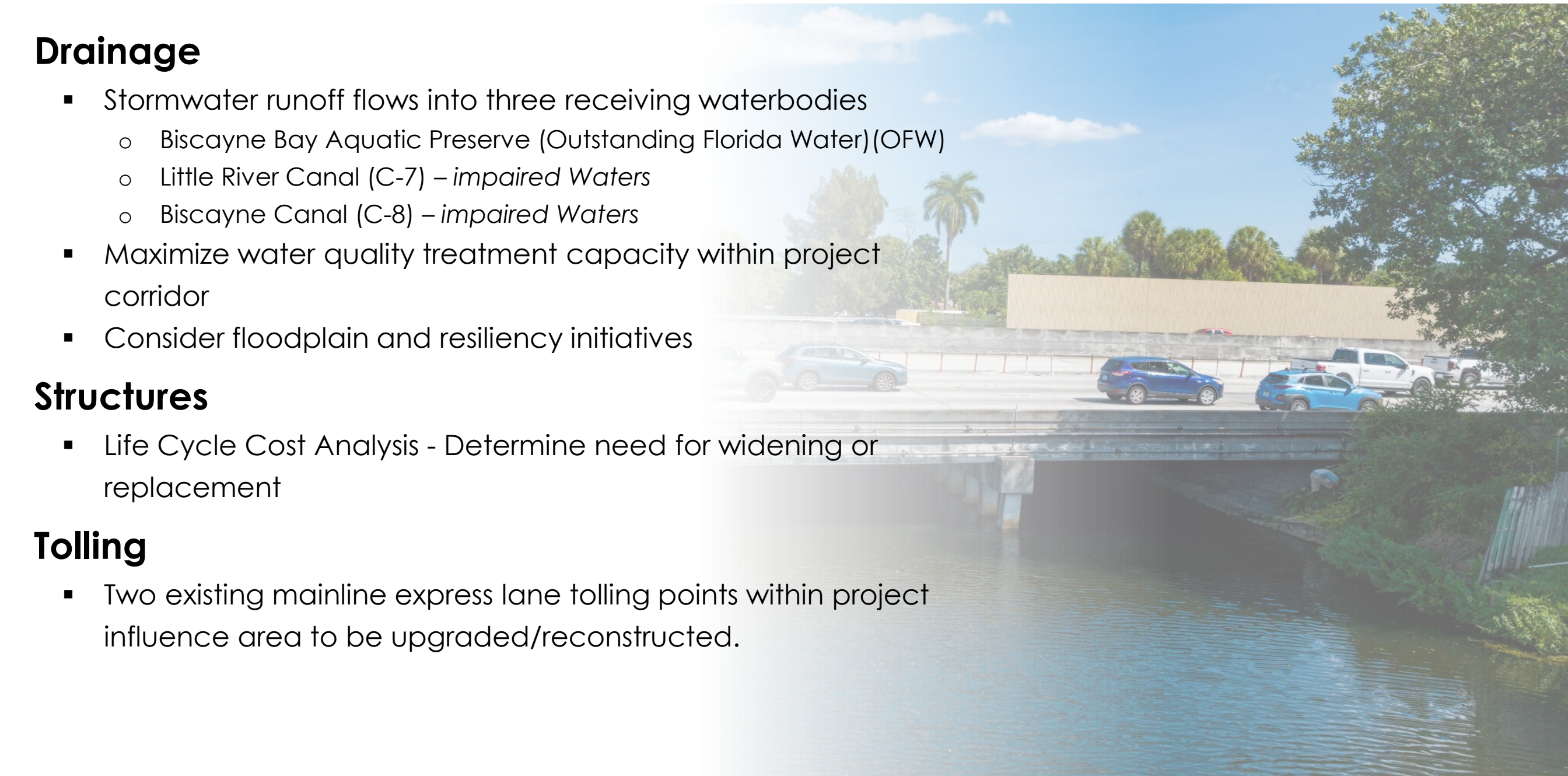
- Stormwater runoff flows into three receiving waterbodies
  - Biscayne Bay Aquatic Preserve (Outstanding Florida Water)(OFW)
  - Little River Canal (C-7) – *impaired Waters*
  - Biscayne Canal (C-8) – *impaired Waters*
- Maximize water quality treatment capacity within project corridor
- Consider floodplain and resiliency initiatives

## Structures

- Life Cycle Cost Analysis - Determine need for widening or replacement

## Tolling

- Two existing mainline express lane tolling points within project influence area to be upgraded/reconstructed.





# Next Steps | Environmental Analysis



## Socio-Cultural Effects Evaluation

- Social
  - Demographics
  - Community Goals & Community Cohesion
  - Safety and Emergency Response
- Right of Way Impacts
  - Business and Residential
- Land Use Impacts
- Mobility
  - Transit & Multimodal
  - Traffic circulation and connections
- Economic
  - Business and Employment
  - Tax Base
- Aesthetics





# Next Steps | Environmental Analysis



## CULTURAL RESOURCES

- Historic sites and structures
- Recreational Resources (Oak Park, Athalie Range Park, Athalie Range Park #2)
- Unity Trail / SUN Trail
- Section 4(f) Potential on recreational resources above



## NATURAL RESOURCES

- Biscayne Bay (Aquatic Preserve/OFW) is downstream
- Little River Canal and Biscayne Canal
- Threatened and Endangered Species
- Water Quality Impact Evaluation

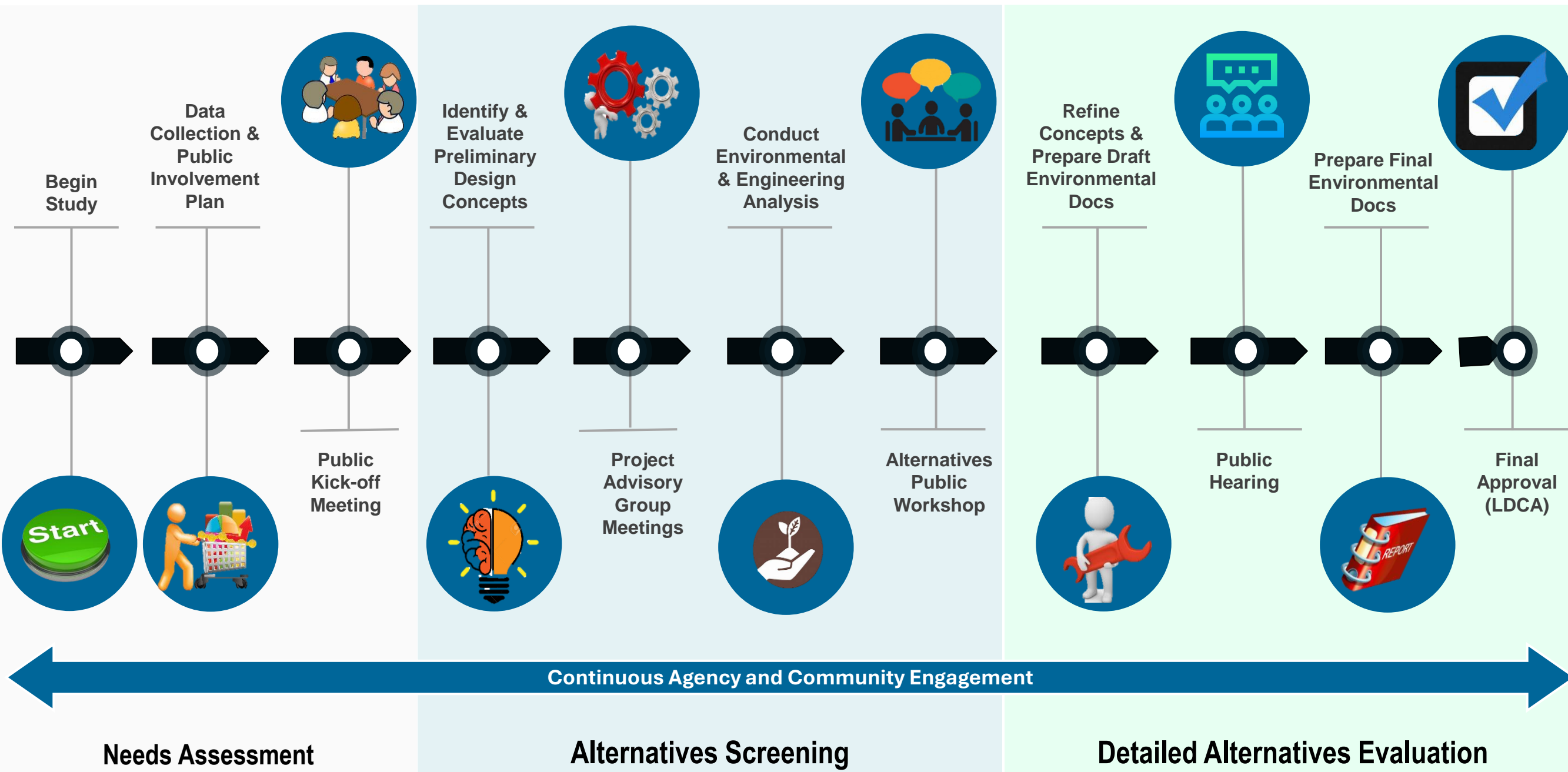


## PHYSICAL ENVIRONMENT

- Noise sensitive sites (33 residential areas)
- Special land use sites such as parks, schools, religious facilities, medical facilities, library and hotel
- Several contaminated sites within corridor buffer



# Next Steps | Alternatives Evaluation Process



# Next Steps | Public Involvement

- Continue and expand outreach effort from the Planning Study
- Tailored And Targeted Outreach for Multiple Stakeholder Groups
  - Residents
  - Elected Officials
  - Tourists
  - Business Owners
  - Commuters
  - Emergency Responders/Agencies
- Project Advisory Group
- Stakeholder Meetings – Available upon request
- Public Meetings
  - Kick-Off Meeting
  - Alternatives Public Workshop
  - Public Hearing

REACH THE COMMUNITY



TELL THE STORY





# Coordination | Municipalities & Agencies



## Municipalities



## Agencies



# PD&E Schedule



Activity	2024		2025				2026				2027			
	Summer	Fall	Winter	Spring	Summer	Fall	Winter	Spring	Summer	Fall	Winter	Spring	Summer	Fall
Begin Study	★													
Data Collection														
Public Kick-Off Meeting		★												
Develop & Analyze Alternatives														
Prepare Environmental Studies														
Alternatives Public Workshop						★								
Develop Preferred Alternative														
Public Hearing											★			
Final PD&E & Environmental Docs														
Location and Design Concept Acceptance														★
Public Involvement														



# Contact Information

## **Bao-Ying Wang, P.E., CPM**

FDOT Project Manager  
FDOT District Six  
1000 NW 111th Avenue, Room 6251  
Miami, Florida 33172  
305-470-5211

[baoying.wang@dot.state.fl.us](mailto:baoying.wang@dot.state.fl.us)

## **Godfrey Lampley, P.E., PTOE**

Consultant Project Manager  
GOAL Associates Inc.  
14750 NW 77th Court, Ste. 320  
Miami Lakes, FL 33016  
786-543-2037

[godfrey.lampley@goalassociates.com](mailto:godfrey.lampley@goalassociates.com)

## **Monica Diaz**

Community Outreach Specialist  
Infinite Source Communications  
7270 NW 12 Street, Ste. 730  
Miami, FL 33126  
305-640-8122

[monica@iscprgroup.com](mailto:monica@iscprgroup.com)



## **Project Website**

[www.southflroads.com/sr9apde](http://www.southflroads.com/sr9apde)



# Questions & Answers

# Rules of Engagement

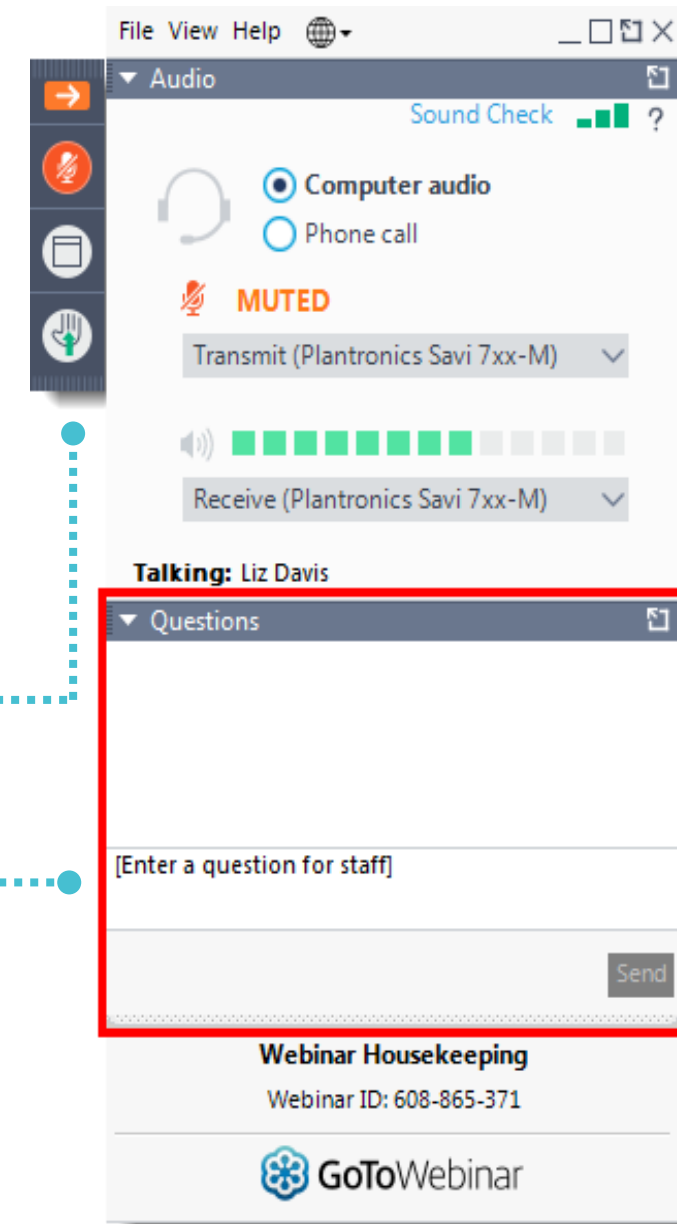
## Providing Comments During Question & Answer Period:

### In-Person

- Form a line behind the microphone provided for the public
- Fill comment card drop written comments in comment box provided

### Virtual

- Use Raise Hand button during comment period, you will be unmuted in order of raising hands
- Type comments in the “Questions” Box on the Control Panel and submit
- Get Technical Assistance - Call 1-800-418-0524





# FDOT Safety Message







**SR 9A / I-95 PD&E STUDY**  
**FROM S OF NW 62ND STREET TO N OF NW 143RD STREET**

**Thank you!**

