



Florida Department of Transportation

RON DESANTIS
GOVERNOR

1000 N.W. 111 Avenue
Miami, Florida 33172

JARED W. PERDUE, P.E.
SECRETARY

For Immediate Release

March 5, 2025

Contact: FDOT District 6 Communications Office

(305) 470-5225 | FDOT-D6comm@dot.state.fl.us

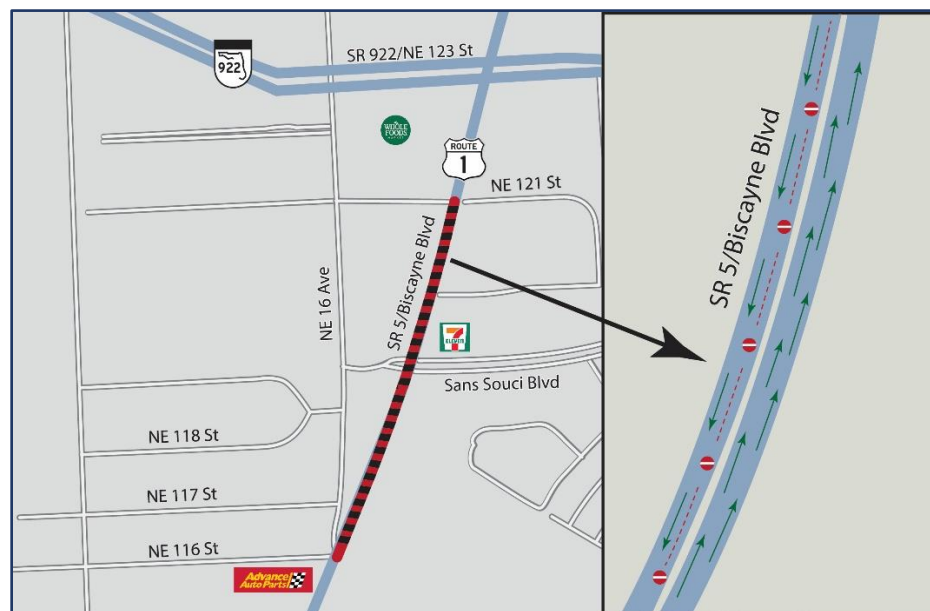
Southbound Closures and Detours on SR 5/US 1/Biscayne Boulevard Begin on March 14

From San Souci Boulevard to NE 116 Street

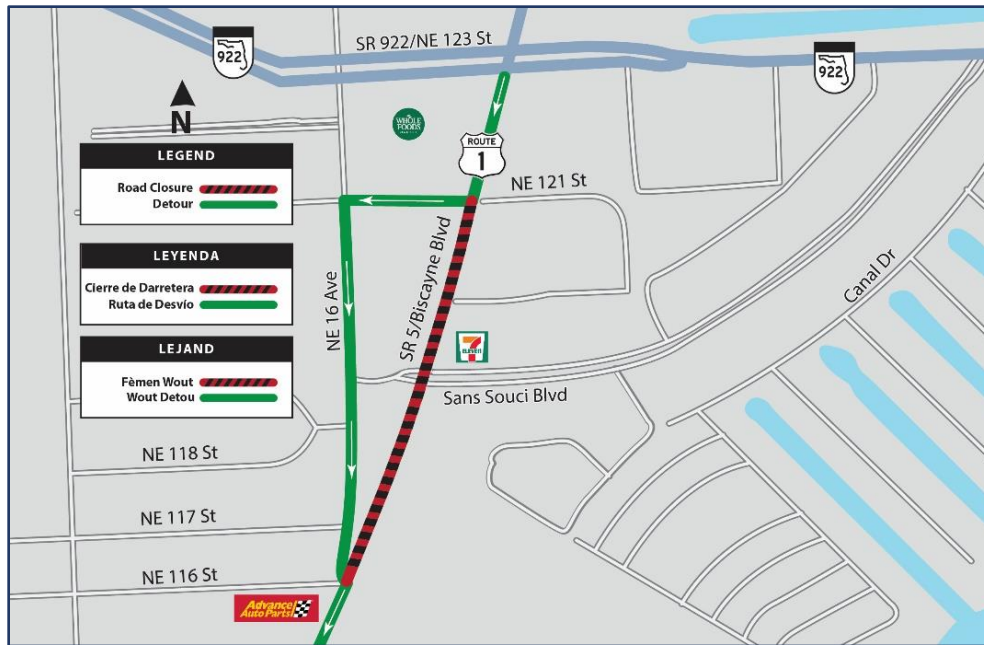
MIAMI, Fla. – The Florida Department of Transportation (FDOT) announced continuous southbound closures and detours on State Road (SR) 5/US 1/Biscayne Boulevard from San Souci Boulevard to NE 116 Street beginning Friday night, March 14, through Monday morning, April 14, for drainage improvements.

Motorists should expect the following closures throughout this period:

- **Continuous Lane Closure:** The inside lane on southbound SR 5/Biscayne Boulevard will be continuously closed between San Souci Boulevard to NE 116 Street each day, with concrete barrier wall. One lane of traffic will remain open.



- **Nightly Full Closure:** Both southbound lanes on SR 5/Biscayne Boulevard from San Souci Boulevard to NE 116 Street will be closed from 10 p.m. to 6 a.m. each night.



Motorists wishing to access southbound Biscayne Boulevard during nightly full closures should:

- Continue southbound on Biscayne Boulevard
- Turn right onto NE 121 Street
- Turn left onto NE 16 Avenue
- Continue south on NE 16 Street to re-enter southbound Biscayne Boulevard at NE 116 Street

Traffic Control Officers will be stationed from 7 a.m. to 7 p.m. to ensure safety and assist as needed. Detours will be clearly marked. Please follow all posted signage and note that the schedule may change due to weather or other unexpected conditions.

For more information, please contact FDOT's Communication Office at (305) 470-5349, or visit our website at www.southflroads.com.

For real time traffic and lane closure information, drivers are encouraged to visit www.fl511.com.

Remember, wearing a safety belt is the single most effective way to protect people and reduce fatalities in motor vehicle crashes. Always be safe and remain alert while driving in construction zones.

###

SouthFLRoads.com | X: [@MyFDOT_Miami](https://twitter.com/MyFDOT_Miami) | Facebook: [@MyFDOTMiami](https://www.facebook.com/MyFDOTMiami)

The Florida Department of Transportation's mission is to provide a safe statewide transportation system that promotes the efficient movement of people and goods, supports the state's economic competitiveness, prioritizes Florida's environment and natural resources, and preserves the quality of life and connectedness of the state's communities.