



Florida Department of Transportation

RON DESANTIS
GOVERNOR

1000 N.W. 111 Avenue
Miami, Florida 33172

JARED W. PERDUE, P.E.
SECRETARY

For Immediate Release

January 19, 2023

Contact: Tish Burgher

(305) 470-5277 | Tish.Burgher@dot.state.fl.us

Lane Closures along State Road (SR) 25/US 27/Okeechobee Road

January 20 through January 21, 2023

MIAMI, Fla. – Travel lanes along SR 25/US 27/Okeechobee Road will be continuously closed in both directions approaching NW 116 Way/Hialeah Gardens Boulevard from 9 p.m., Friday, January 20 until 5 p.m., Saturday, January 21, while workers install a concrete wall for a 102-inch drainage pipe at the Miami Canal.

- One northbound left turn lane will be closed.
- Three southbound through lanes will be closed. The two turn lanes will be converted into two through lanes. No left turns will be allowed.

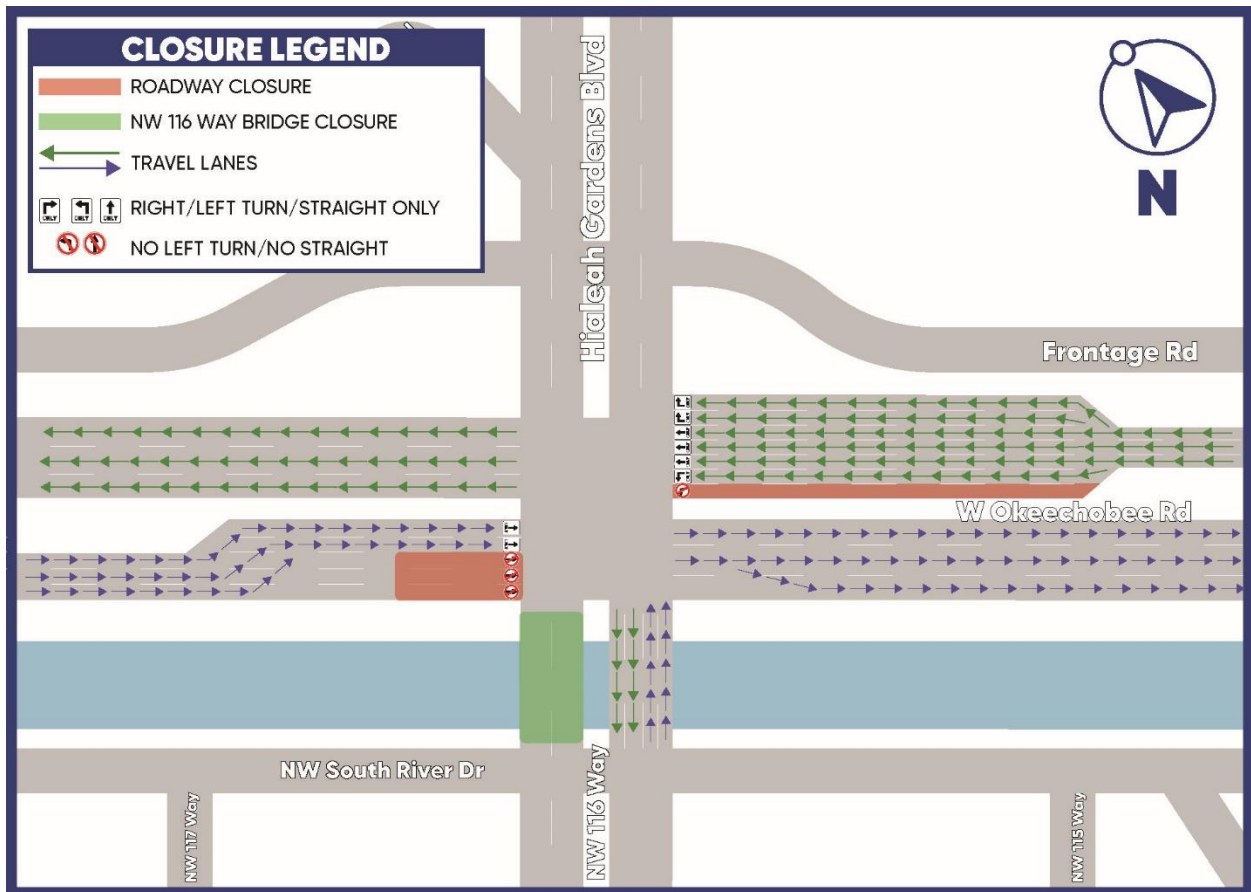
Drivers going southeast on SR 25/US 27/Okeechobee Road who want to go north on NW 116 Way/Hialeah Gardens Boulevard will turn left onto NW 138 Street, then turn right onto the Frontage Road and continue southeast to northbound NW 116 Way/Hialeah Gardens Boulevard.

Please note that this schedule may change due to bad weather or other unforeseen conditions.

This project is part of the corridor-wide reconstruction of the SR 25/US 27/Okeechobee Road from the Broward County Line to SR 826/Palmetto Expressway. This work will improve safety, enhance mobility along this Strategic Intermodal Systems (SIS) corridor, and inspire innovative transportation solutions, connecting commuters throughout Miami-Dade County.

For additional information, please call FDOT's Public Information Office at (305) 470-5349 or contact the Senior Community Outreach Specialist Maria Alzate at (305) 560-8218 or by email at Maria@iscprgroup.com. You can also visit the project website: www.fdotmiamidade.com/okeechobee.

[Detour Map](#)



Drivers are encouraged to log on to www.fl511.com before they travel to get real-time traffic and lane closure information. The Florida Department of Transportation reminds motorists to always drive safely and avoid distractions while driving. Remember to put down cell phones. Florida law restricts motorists from using a wireless device in a school zone or an active construction zone.

###

FDOTMiamiDade.com | [@MyFDOT_Miami](https://twitter.com/MyFDOT_Miami) | Facebook.com/MyFDOTMiami

The Florida Department of Transportation's mission is to provide a safe transportation system that ensures the mobility of people and goods, enhances economic prosperity, and preserves the quality of the state's environment and communities. The department is committed to building a transportation system that not only fits the current needs of Florida's residents and visitors, but also enhances mobility throughout the state to accommodate its consistent and rapid growth. The unique nature of the Sunshine State and its year-round warm climate provides numerous opportunities to achieve the department's mission through multiple transportation modes including highways/streets, air, rail, sea, spaceports, transit, and the ever-expanding deployment of bicycle & pedestrian facilities.