

# STATE ROAD 25 / US 27 / OKEECHOBEE ROAD FROM EAST OF NW 116 WAY TO EAST OF NW 87 AVE

FPID NO.: 423251-4-52-01



## FDOT PUBLIC MEETING

FLORIDA DEPARTMENT OF TRANSPORTATION



# **WELCOME!**

**State Road 25 / Okeechobee Road  
From East of NW 116 Way to East of NW 87 Ave.  
Public Meeting #2**

**Wednesday, April 5, 2023**

**The meeting will begin soon**



**BaoYing Wang, P.E.**  
FDOT Project Manager  
Consultant Management Office



**Oscar Oliva, P.E.**  
Consultant Project Manager  
BCC Engineering, LLC



**Alicia Gonzalez**  
Community Outreach Specialist  
Media Relations Group, LLC

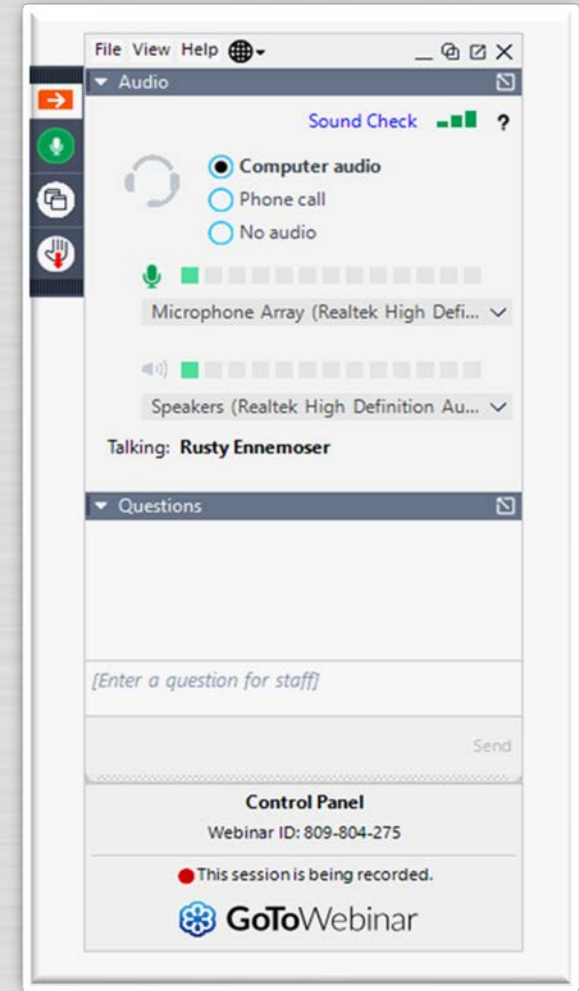
# Rules of Engagement

- Virtual attendees are **automatically muted** to start the meeting
- To provide comments during open discussion period:
  - In-person attendees form a line
  - Call **+1 (914) 614-3221**; access code: **642-794-607**
  - Use “**Raise hand**” button during comment period, you will be unmuted in order of raising hands
  - Submit comments via the “**Questions**” Box



If you are having technical difficulties, please contact:

e: [lhatchell@mrgmiami.com](mailto:lhatchell@mrgmiami.com)  
p: 863-370-5151

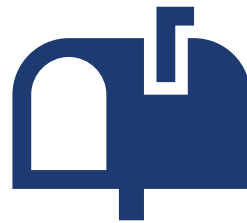




# Public Notice



Florida Administrative Register



Property owner letters



Email to project contacts list



FDOT website



Newspapers



Hand delivery



## Title VI of the Civil Rights Act of 1964

- *Public participation is solicited without regard to race, color, national origin, age, sex, religion, disability, or family status. Persons wishing to express concerns relative to FDOT compliance with Title VI may do so by contacting:*

**Nicholas Danu, PE**  
**District Six Title VI Coordinator**  
1000 NW 111 Avenue  
Miami, Florida 33172  
(305) 470-5219  
Nicholas.Danu@dot.state.fl.us

**Stefan Kulakowski**  
**State Title VI Coordinator**  
605 Suwannee Street, Mail Station 65  
Tallahassee, Florida 32399-0450  
(850) 414-4742  
Stefan.Kulakowski@dot.state.fl.us

*All inquiries or concerns will be handled according to FDOT procedure and in a prompt and courteous manner.*



## Project Overview

Okeechobee Road is a regionally significant arterial that begins at NW 36 Street just north of the Miami International Airport and traverses the entire state



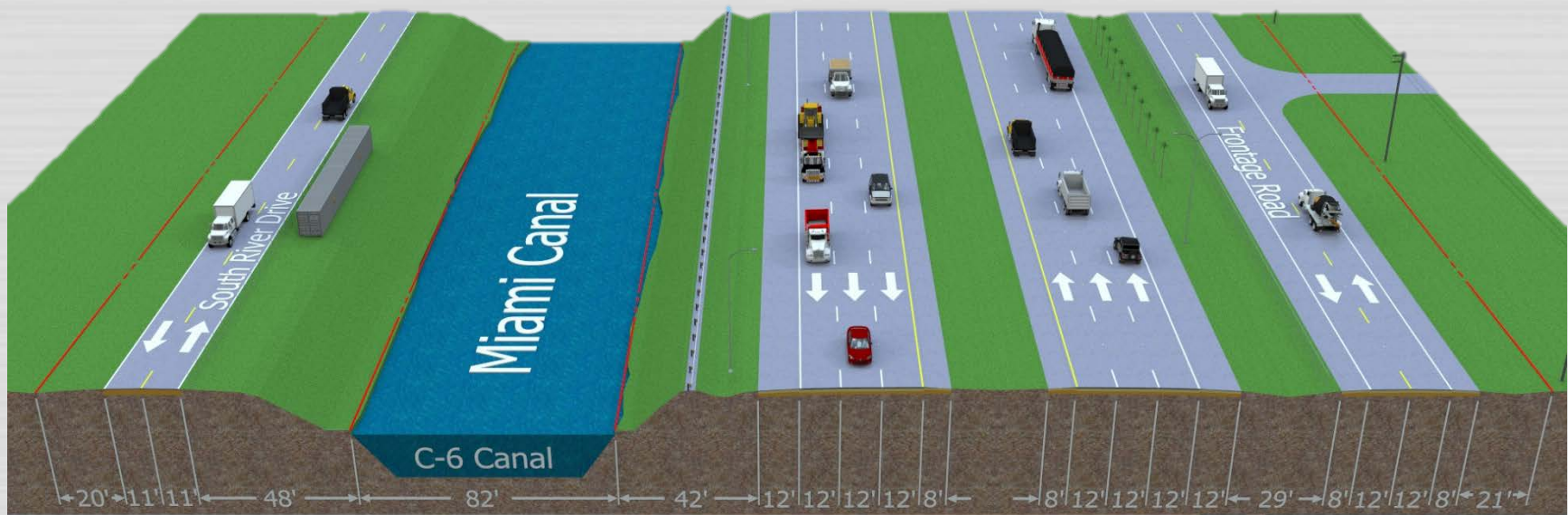
### SR 25 / Okeechobee Road Various Projects Overview Map



FM No.:423251-2-32-01	FM No.:443645-1 (423251-6)	FM No.:423251-5-32-01	FM No.:423251-4-32-01	FM No.:423251-3-32-01	FM No.:436565-1-32-01
From Dade/Broward County Line to east of NW 117 Avenue	From W of NW 138 St to E of NW 107 Ave	From east of NW 107 Avenue to east of NW 116 Way	From east of NW 116 Way to east of NW 87 Avenue	From east of NW 87 Avenue to NW 79 Avenue	SR 25 & SR 826 Interchange
<ul style="list-style-type: none"> <li>Construction Begin: Feb. 2022</li> <li>Construction Complete: Fall 2024</li> </ul>	<ul style="list-style-type: none"> <li>Production: 2/13/2019</li> <li>Letting Date: 5/14/2019</li> </ul>	<ul style="list-style-type: none"> <li>Construction Begin: May 2022</li> <li>Construction Complete: winter 2025</li> </ul>	<ul style="list-style-type: none"> <li>Production: 12/09/2024</li> <li>Letting Date: 7/30/2025</li> </ul>	<ul style="list-style-type: none"> <li>Production: 10/23/2023</li> <li>Letting Date: 7/21/2024</li> </ul>	<ul style="list-style-type: none"> <li>Production: 10/23/2023</li> <li>Letting Date: 7/21/2024</li> </ul>

## Okeechobee Road

- Divided urban principal arterial
- Three 12-foot lanes in each Direction
- Strategic Intermodal System (SIS) facility
- Access Class 2
- Posted speed – 50 mph
- Existing Right of Way varies – Minimum 350' at intersections



Typical Section (looking west)



# UNDERSTANDING OF SCOPE OF SERVICES PROPOSED IMPROVEMENTS

FLORIDA DEPARTMENT OF TRANSPORTATION  
SR 25/OKEECHOBEE RD  
FROM EAST OF NW 116 WAY TO EAST OF NW 87 AVE



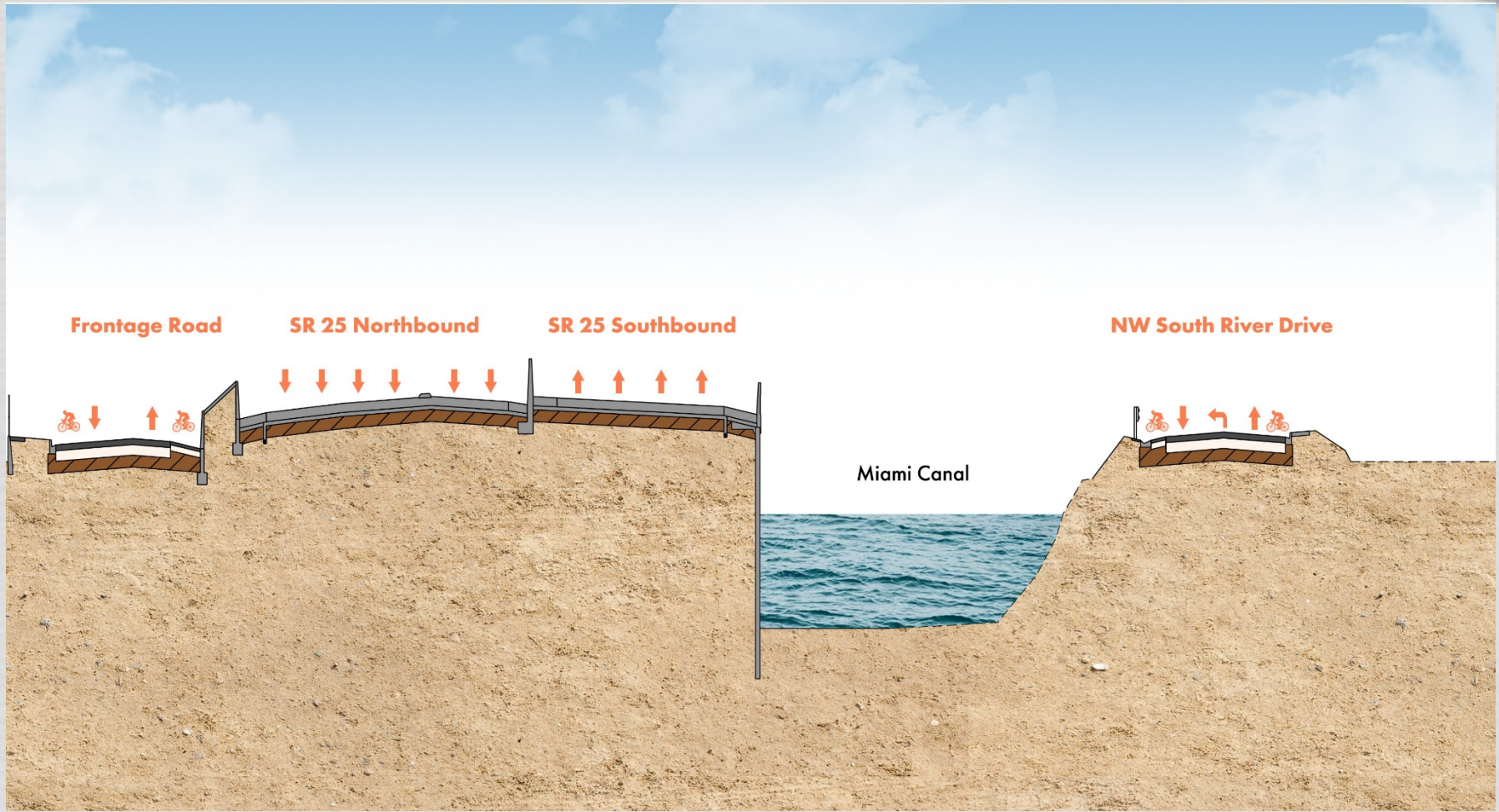
- Roadway Design
  - ❖ Okeechobee Road
  - ❖ Frontage Road
  - ❖ NW 103 Street
  - ❖ NW 87 Avenue
  - ❖ NW South River Drive
  - ❖ NW 106 Street
- Structure Design
  - ❖ Okeechobee Road. 3rd Level Bridge
  - ❖ Two Flyover Bridges
  - ❖ Two Flat Slab Bridges
  - ❖ Retaining walls
  - ❖ Miscellaneous structures
- Replacement of existing SFMWD culverts with G-72E Control Structure at Canal C-7
- Modification of Police Parking Area
- New lighting system
- Signing and Pavement Markings
- Signalization – 12 locations
- Intelligent Transportation System

# PROPOSED IMPROVEMENTS OKEECHOBEE RD TYPICAL SECTION

FLORIDA DEPARTMENT OF TRANSPORTATION  
**SR 25/OKEECHOBEE RD**  
FROM EAST OF NW 116 WAY TO EAST OF NW 87 AVE



Typical Section north of NW 87 Avenue (looking east)



# PROPOSED IMPROVEMENTS

## GRADE SEPARATION OKEECHOBEE RD

FLORIDA DEPARTMENT OF TRANSPORTATION  
SR 25/OKEECHOBEE RD  
FROM EAST OF NW 116 WAY TO EAST OF NW 87 AVE



- Okeechobee Road : 3<sup>rd</sup> Level
- Flyover Ramps (Okeechobee Road to NW 87<sup>TH</sup> Avenue): 2<sup>nd</sup> Level
- NW 87 Avenue: Ground Level



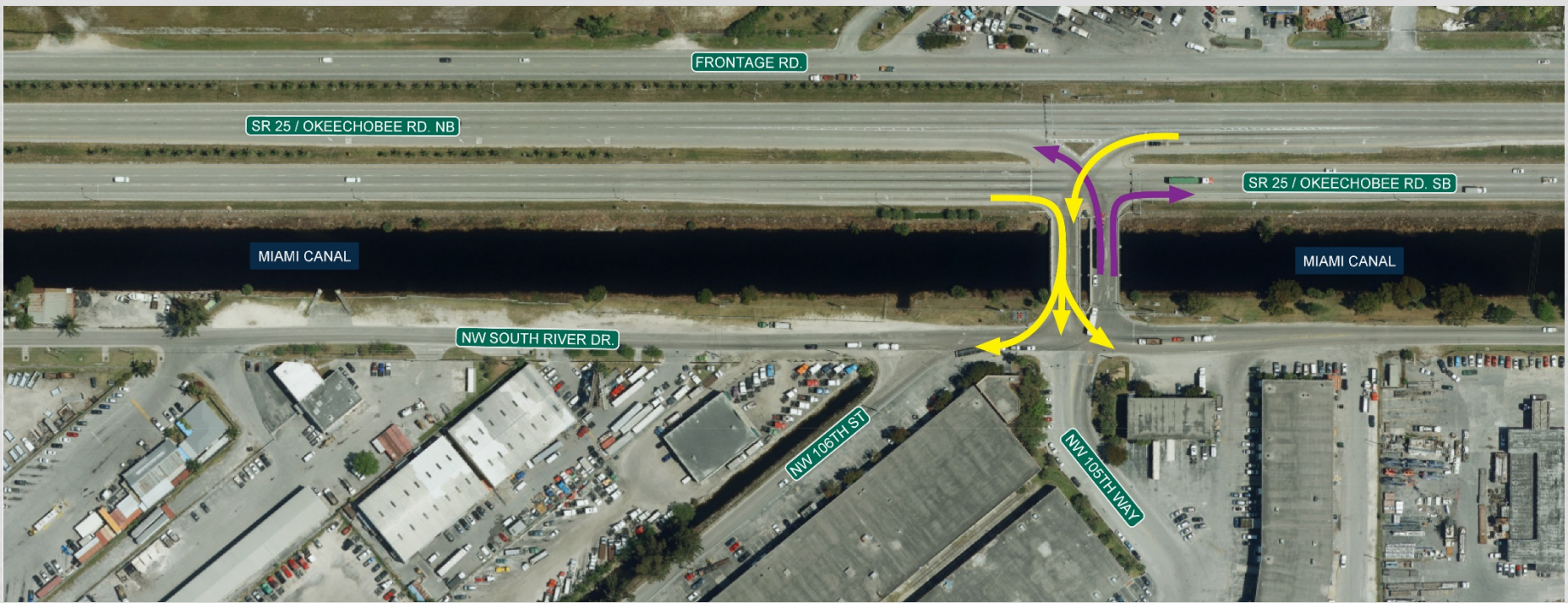
# PROPOSED IMPROVEMENTS

## ACCESS CHANGES



### Okeechobee Road access to South River Drive

- ❖ Existing: Intersection at NW 105 Way
  - All movements provided at intersection



# PROPOSED IMPROVEMENTS ACCESS CHANGES



## Okeechobee Road access to South River Drive

- ❖ Proposed: Intersection at NW 106 Street
  - All movements provided at intersection
  - NW 105 Way Bridge will be removed



# PROPOSED IMPROVEMENTS ACCESS CHANGES

FLORIDA DEPARTMENT OF TRANSPORTATION  
**SR 25/OKEECHOBEE RD**  
FROM EAST OF NW 116 WAY TO EAST OF NW 87 AVE



## Okeechobee Road and NW 106<sup>TH</sup> Street Intersection



# PROPOSED IMPROVEMENTS ACCESS CHANGES



- Okeechobee Road access to NW 87 Avenue
  - ❖ Existing: Intersection at NW 87 Avenue
    - All movements provided at intersection



# PROPOSED IMPROVEMENTS ACCESS CHANGES

FLORIDA DEPARTMENT OF TRANSPORTATION  
**SR 25/OKEECHOBEE RD**  
FROM EAST OF NW 116 WAY TO EAST OF NW 87 AVE



## Okeechobee Road and NW 87 Avenue





# PROPOSED IMPROVEMENTS ACCESS CHANGES

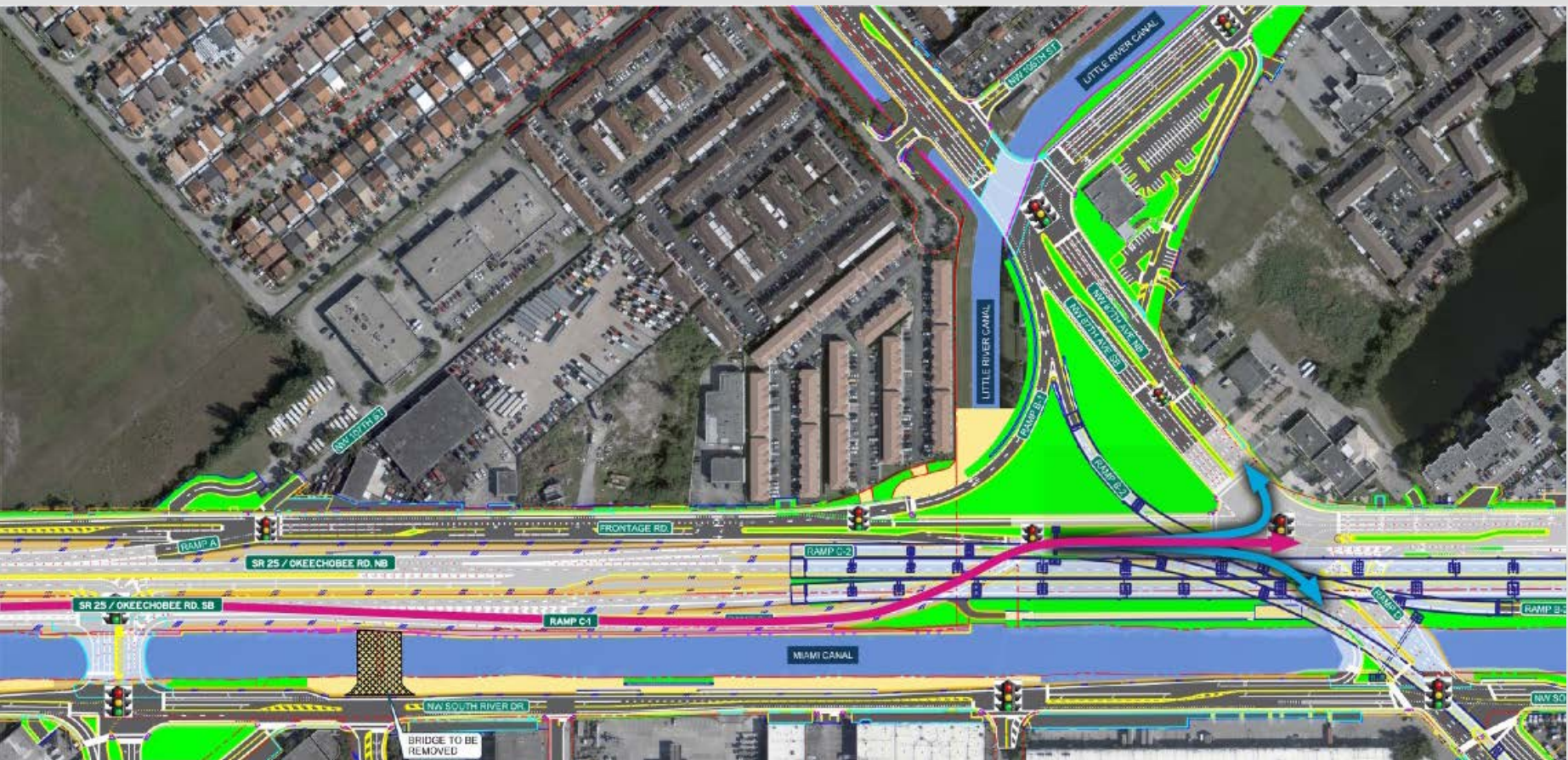


## Southbound Okeechobee Road access to Southbound Frontage Road

- ❖ Proposed : Exit onto Ramp C-1

## Southbound Okeechobee Road access to NW 87 Avenue

- ❖ Proposed : Exit onto Ramp C-1 to Frontage Road / NW 87 Avenue Intersection



# PROPOSED IMPROVEMENTS

## ACCESS CHANGES

FLORIDA DEPARTMENT OF TRANSPORTATION  
SR 25/OKEECHOBEE RD  
FROM EAST OF NW 116 WAY TO EAST OF NW 87 AVE

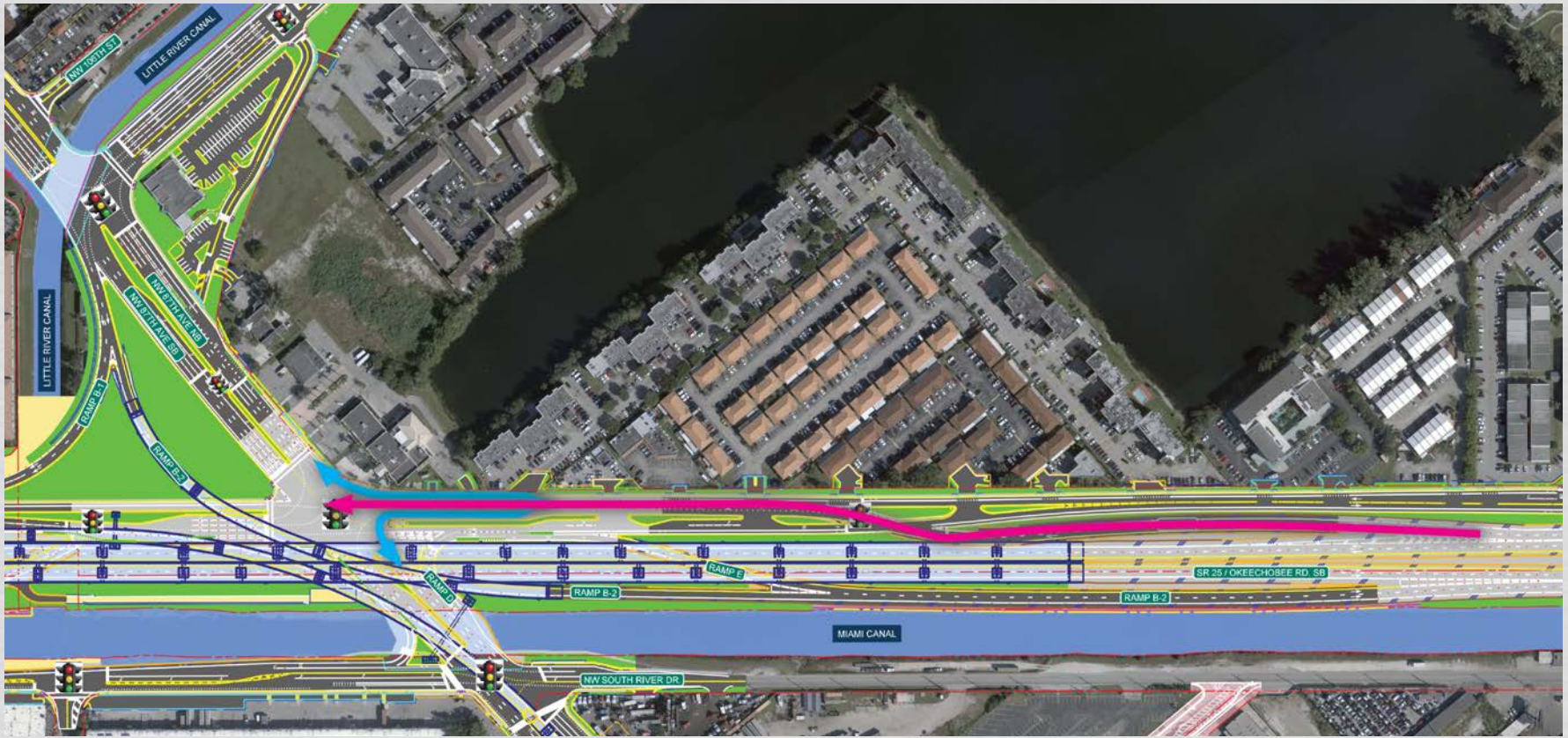


### Northbound Okeechobee Road access to Northbound Frontage Road

- ❖ Proposed: Exit onto Ramp F

### Northbound Okeechobee Road access to NW 87 Avenue

- ❖ Proposed: Exit onto Ramp F to Frontage Road / NW 87 Avenue Intersection



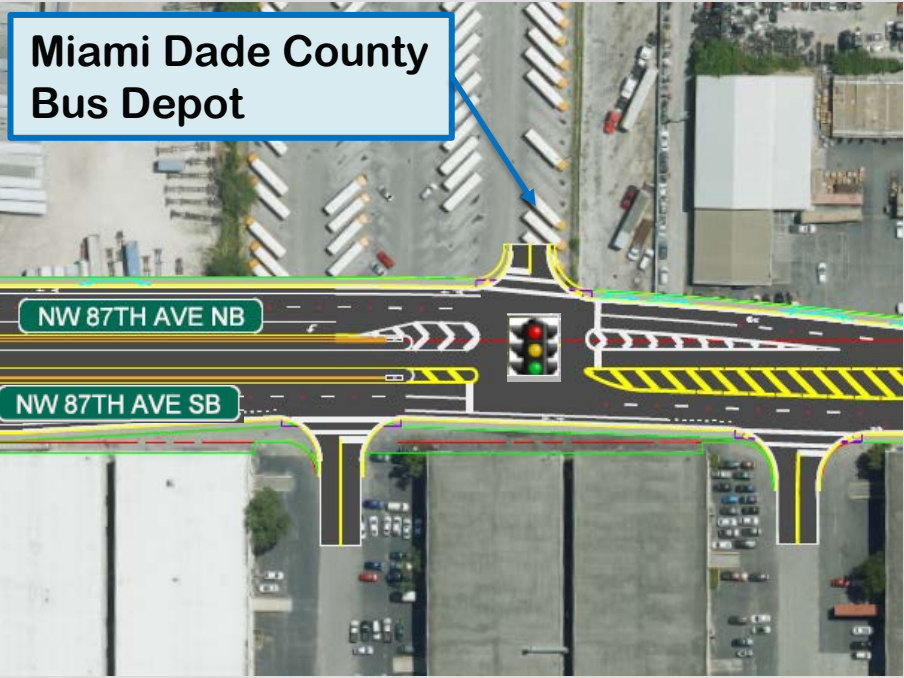
# PROPOSED IMPROVEMENTS ACCESS CHANGES



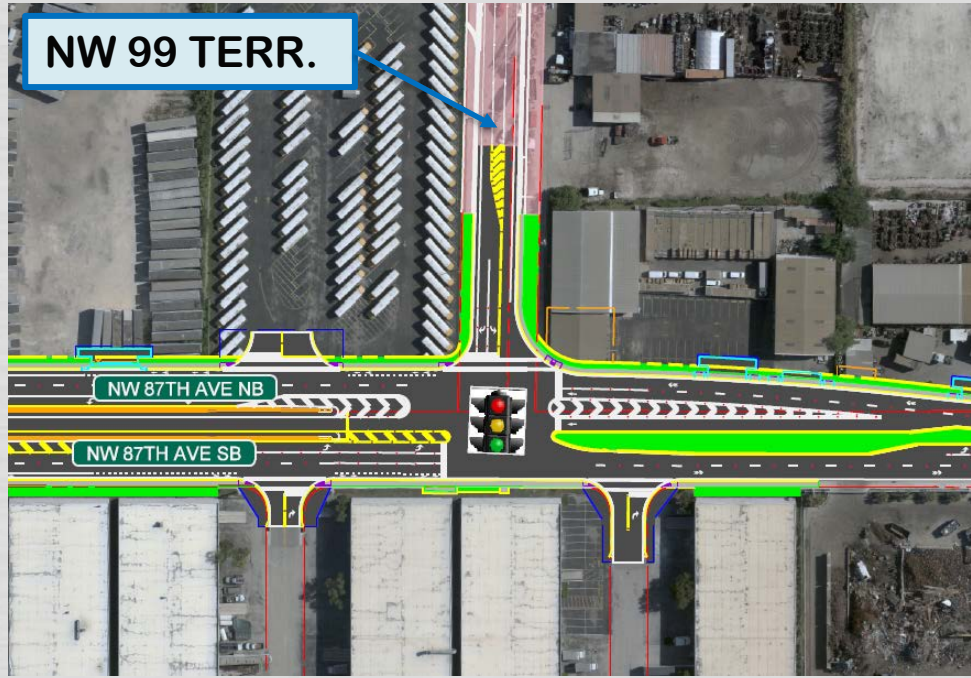
## NW 99 Terrace

- ❖ New road to be constructed by the Town of Medley
- ❖ Anticipated to be completed by the end of 2024

NW 87 Avenue design was modified to accommodate NW 99 Terrace



Previous Design



Current Modified Design

# PROPOSED IMPROVEMENTS ACCESS CHANGES



Northbound NW 87 Avenue access to Northbound Okeechobee Road

- ❖ Proposed: Median Flyover Ramp C-2 at NW 99 Terrace

Northbound NW 87 Avenue access to Southbound Okeechobee Road

- ❖ Proposed: Right turn onto Frontage Rd and right turn to Ramp E



# PROPOSED IMPROVEMENTS ACCESS CHANGES

FLORIDA DEPARTMENT OF TRANSPORTATION  
**SR 25/OKEECHOBEE RD**  
FROM EAST OF NW 116 WAY TO EAST OF NW 87 AVE



## Northbound NW 87 Avenue access to Southbound Okeechobee Road



# PROPOSED IMPROVEMENTS

## ACCESS CHANGES



### Northbound Frontage Road to Northbound Okeechobee Road

- ❖ Proposed: Left turn onto Ramp A

### Southbound NW 87 Avenue to Northbound Okeechobee Road

- ❖ Proposed: Exit onto Ramp B-1 to Frontage Road and left Turn onto Ramp A



# PROPOSED IMPROVEMENTS

## ACCESS CHANGES

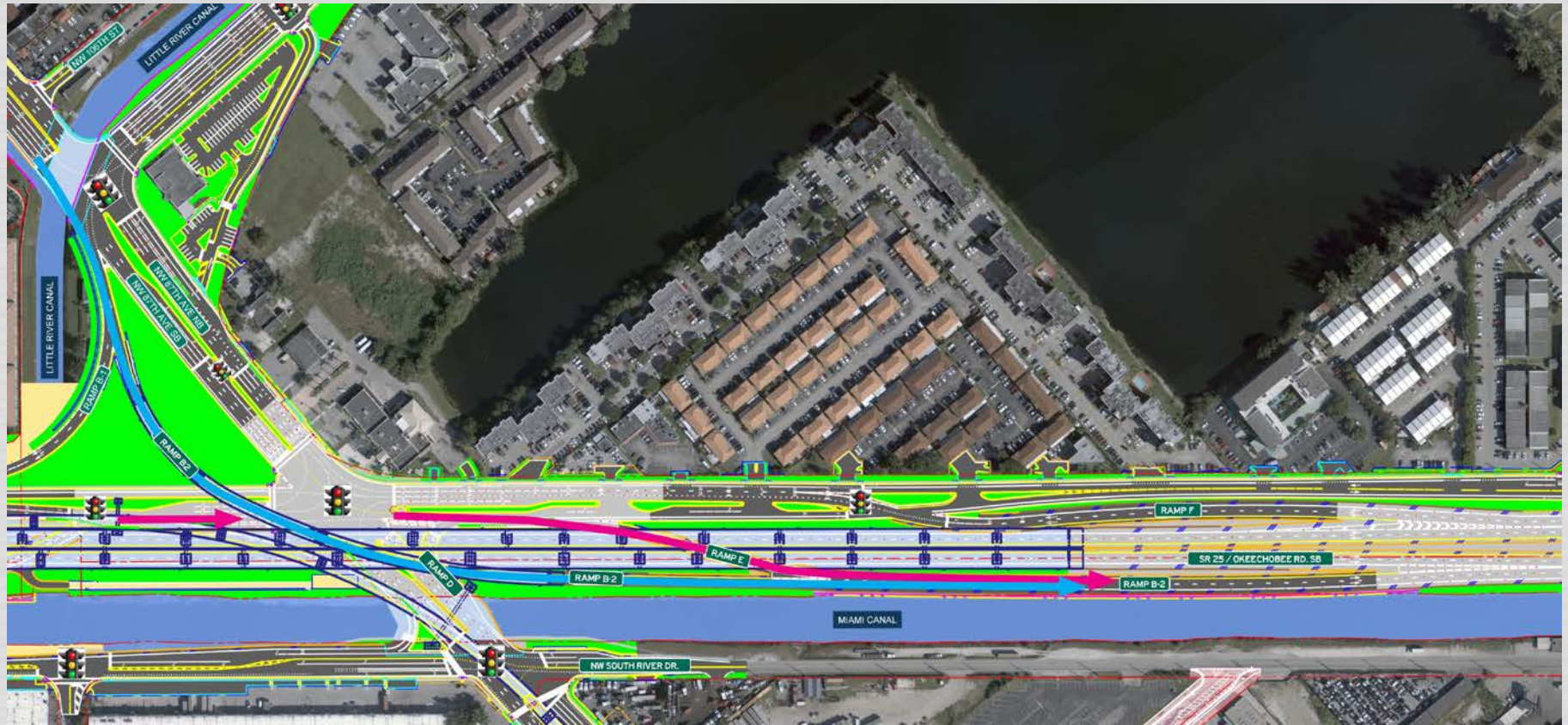


### Southbound Frontage Road to Southbound Okeechobee Road

- ❖ Proposed: Right turn onto Ramp E

### Southbound NW 87 Avenue to Southbound Okeechobee Road

- ❖ Proposed: Right Turn onto Ramp B-2



# PROPOSED IMPROVEMENTS ACCESS CHANGES

FLORIDA DEPARTMENT OF TRANSPORTATION  
**SR 25/OKEECHOBEE RD**  
FROM EAST OF NW 116 WAY TO EAST OF NW 87 AVE



## NW 103 Street Realignment

- ❖ Existing condition: NW 103 Street begins at Okeechobee Road



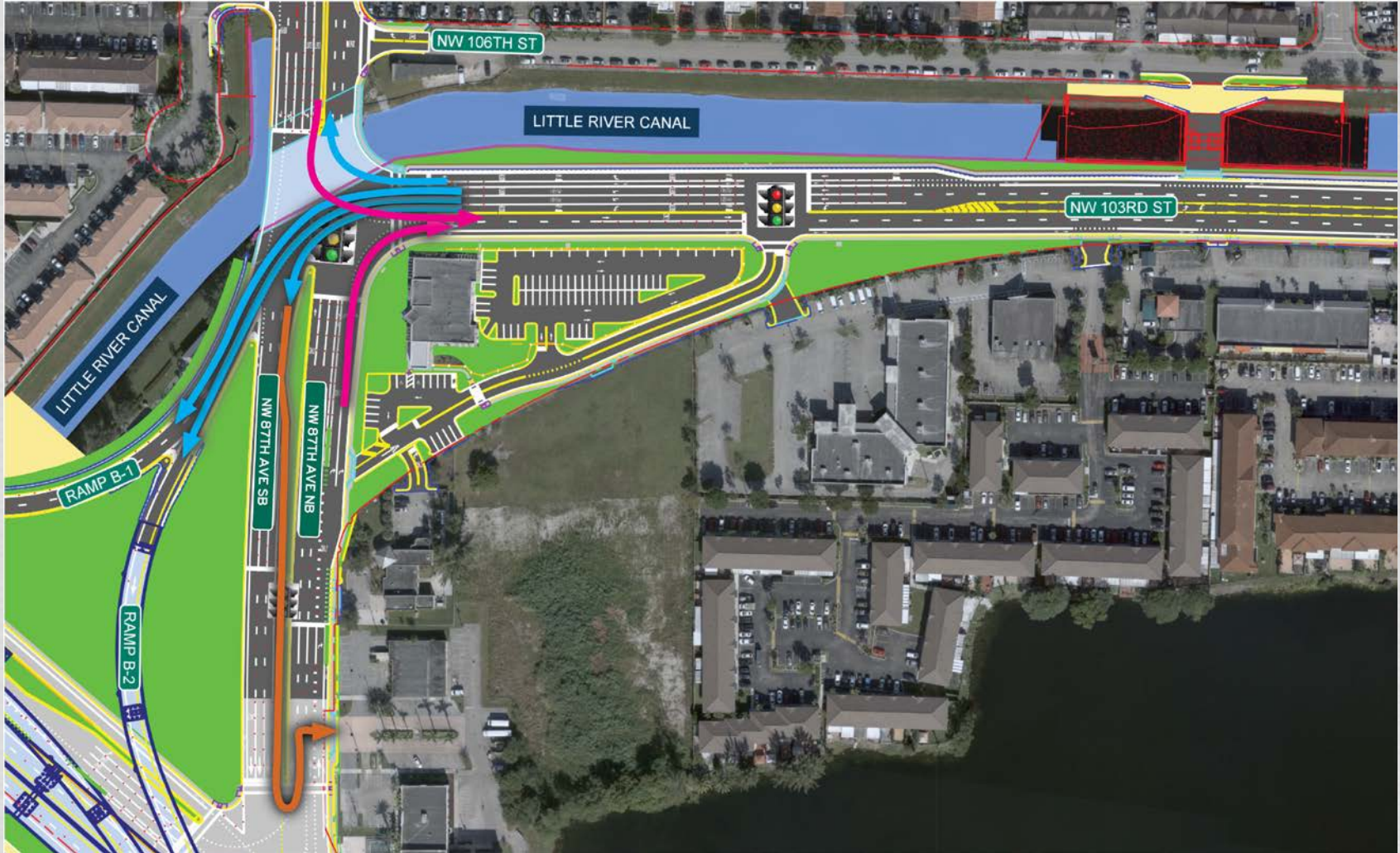


# PROPOSED IMPROVEMENTS ACCESS CHANGES



## NW 103 Street Realignment

- ❖ Proposed condition: NW 103 Street realigned to connect to NW 87 Avenue



# PROPOSED IMPROVEMENTS ACCESS CHANGES

FLORIDA DEPARTMENT OF TRANSPORTATION  
**SR 25/OKEECHOBEE RD**  
FROM EAST OF NW 116 WAY TO EAST OF NW 87 AVE



## NW 87 Avenue and NW 103 Street Intersection

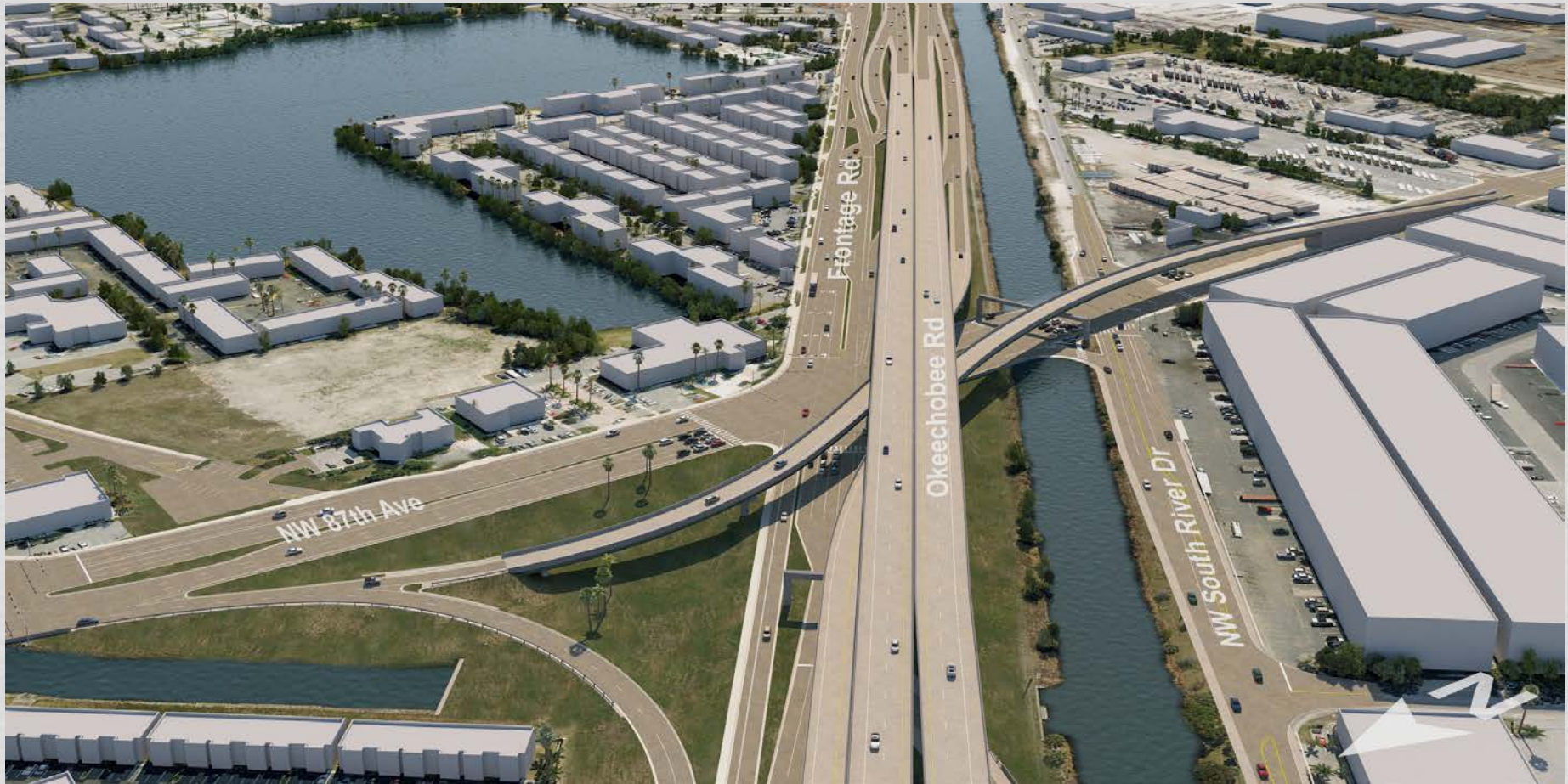


# PROPOSED IMPROVEMENTS ACCESS CHANGES



## Frontage Road:

- ❖ Existing: Undivided Open Shoulder Roadway
- ❖ Proposed: Curb and Gutter with divided median





### Bicycle Access

- ❖ Existing: no bicycle facilities
- ❖ Proposed:
  - Designated bicycle lanes on the Frontage Road
  - Designated bicycle lanes on NW 87<sup>TH</sup> Avenue
  - Designated bicycle lanes on NW South River Drive
  - Undesignated bicycle lanes on Okeechobee Road

### Pedestrian Access

- ❖ Existing: Sidewalk gaps throughout
- ❖ Proposed:
  - Continuous sidewalk along the north side of the frontage road
  - Continuous sidewalk along the east side of NW 87<sup>TH</sup> Avenue
  - Continuous sidewalk on the south side of NW South River Drive

### Transit Access:

- ❖ No changes to transit access other than improvements due to bicycle and pedestrian access

# BROTHERS TO THE RESCUE MONUMENT RE-ESTABLISHMENT

FLORIDA DEPARTMENT OF TRANSPORTATION  
SR 25/OKEECHOBEE RD  
FROM EAST OF NW 116 WAY TO EAST OF NW 87 AVE



- ❖ The Monument will be impacted by this project
- ❖ A Memorandum of Agreement was executed between FDOT and City of Hialeah Gardens for the Monument re-establishment
  - FDOT will compensate the City of Hialeah Gardens for the reasonable cost to re-establish the Monument at the City's designated site
  - The City shall apply for an FDOT permit to remove any of the existing Monument features. The removal will be completed prior to September 15, 2024





## Project Dates

- ❖ Finalize Design – Plans Completed October 2024
- ❖ Right of Way Acquisition Process – Completed by November 2024
- ❖ Construction is expected to begin December 2025

## Project Cost

- ❖ \$240 Million

## Municipalities in Project Area

- ❖ City of Hialeah Gardens
- ❖ Town of Medley
- ❖ City of Hialeah

## Possible Effects During Construction

- ❖ Work will be done in phases to reduce the effects of construction on the community

## Maintenance of Traffic (MOT)

- ❖ The MOT will be designed to minimize adverse impacts to local residents and businesses during construction.

# CONTACT INFORMATION


FLORIDA DEPARTMENT OF TRANSPORTATION  
**SR 25/OKEECHOBEE RD**  
FROM EAST OF NW 116 WAY TO EAST OF NW 87 AVE



If you have additional questions, please contact:

**Alicia Gonzalez**  
**Community Outreach Specialist**

agonzalez@mrgmiami.com 

14707 South Dixie Hwy, Suite 404  
Miami, FL 33176 

(786) 280-6645 



<https://www.fdotmiamidade.com/design-projects/okeechobee-road/sr-25okeechobee-rd-from-east-of-nw-116-way-to-east-of-nw-87-ave.html>





# STATE ROAD 25 / US 27 / OKEECHOBEE ROAD FROM EAST OF NW 116 WAY TO EAST OF NW 87 AVE

FPID NO.: 423251-4-52-01



## FDOT PUBLIC MEETING

FLORIDA DEPARTMENT OF TRANSPORTATION